

JCB AFTERMARKET ATTACHMENTS

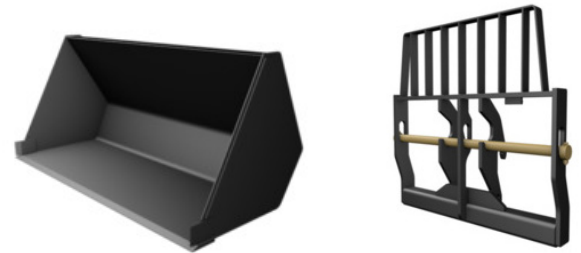


JCB COMPARABLE REPLACEMENT ATTACHMENTS NOW AVAILABLE

JLG now offers attachments comparable to JCB standard attachments. Dimensions and interchangeability with all JCB parts and machines is not guaranteed. Before use, please read the serial tag attached, as the weight and capacity may be different from what is indicated on JCB load charts.

Features and benefits:

- High quality, cost effective telehandler attachments
- Easy access to JLG Support
- Interchangeable with JLG Telehandlers



*Click on the MaxQuip Part Number to learn more:

Description	MaxQuip Part Number	Compare to JCB*	JCB Models
50" Tilt Carriage Assy w/ Shackle	70400346**	332/E5277 (48" STD)	507-42, 509-42
50" Tilt Carriage Assy	70400347**	333/C9121 (48" STD)	510-56, 512-56
60" Tilt Carriage Assy w/ Shackle	70400348**	332/E8917 (66"STD)	507-42, 509-42
60" Tilt Carriage Assy	70400349**	333/C9123 (66"STD)	510-56, 512-56
72" Tilt Carriage Assy w/ Shackle	70400350**	332/E5279 (72" STD)	507-42, 509-42
72" Tilt Carriage Assy	70400351**	333/C9124 (72"STD)	510-56, 512-56
72" 1.0 yd ³ Bucket	70400352	330/71712 (96", 1.0 yd ³)	507-42, 509-42
96" 1.5 yd ³ Bucket	70400353		510-56, 512-56
102" 2.0 yd ³ Bucket	70400354		
Truss Boom, 12 ft	70400355	330/71713 (12')	507-42, 509-42 510-56, 512-56

* JLG comparable replacements may not be an exact size match to the JCB attachments

**JLG recommends use of JLG forks with these carriages. Failure to do so may result in bent or damaged forks. Use only forks with dimensions listed below:

Offset: 10mm

Fork drop: 24"

Eye Diameter: 2.25"

Order Today

Online: onlineexpress.jlg.com | Call: 1-877-554-5438 | Fax: 1-800-733-8939

All names/trademarks are the property of their respective owners and/or manufacturers.

JLG Industries, Inc

1 JLG Drive | McConnellsburg, PA 17233-9533 | Toll-Free in US 877-JLG-LIFT (877-554-5438)

F: 717-485-6417 | maxquip@jlg.com

onlineexpress.jlg.com

An Oshkosh Corporation Company