

BRICKGUARD

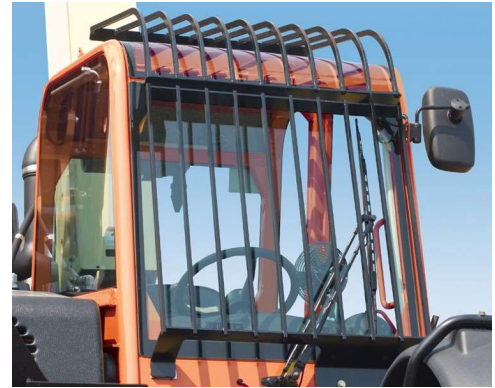


PROTECT YOUR INVESTMENT

A brick guard provides extra protection for your telehandler. There are two separate brick guards - one for the top and one for the front. Brick guards are ideal for sites lifting brick, block or any other debris that can fall.

Features:

- Constructed of ASTM A36 steel
- Extra protection for your telehandler
- A necessity for site lifting brick, block or any other debris that can fall
- Can be used in open and closed cabs
- Will not affect the use of the windshield wiper



DESCRIPTION	JLG MACHINE MODELS	JLG PART NUMBER
Top Brick Guard	G5-18A	1001081286S
	G9-43A/G10-43A	1001100879S
	G10-55A/G12-55A	
	G6-42A	
	G15-44A	
	642/742/943/1043/1055/1255	1001199380
	1075, 2733	1001199380
	1644/1732	1001160496
Front Brick Guard	3013	1001268749
	G5-18A	1001081287S
	G9-43A/G10-43A	1001100880S
	G10-55A/G12-55A	
	G6-42A	
	G15-44A	
	642/742/943/1043/1055/1255	1001199381
	1075, 2733	1001212845
1644/1732	1001160506	

Cont.

Order Today

Online: OnlineExpress.jlg.com

Call: 1-877-554-5438 | Fax: 1-800-733-8939



BRICKGUARD



Cont.

Top & Front Guards	G5-18A	1001258137
	519, AG519	1001303730
	642/742/943/1043/1055/1255	1001199382
	1075, 2733	1001199382
	1644/1732	1001172774
	R1370/R1385/R11100	1001275965S

NOTES:

^ When assembling a front brick guard with a top brick guard (p/n 1001100879), the top brick guard flange should be mounted under the front brick guard flange.

^ For machines equipped with work lights, the work lights should be mounted below the brick guard's upper mounts.

^ When installing a top brick guard with the A/C option, the brick guard should be mounted underneath the condenser and use the same hardware that is supplied with the A/C kit. Discard P/N 0641608, 3271601, 4711600 and 4761600.

Order Today

Online: OnlineExpress.jlg.com

Call: 1-877-554-5438 | Fax: 1-800-733-8939

