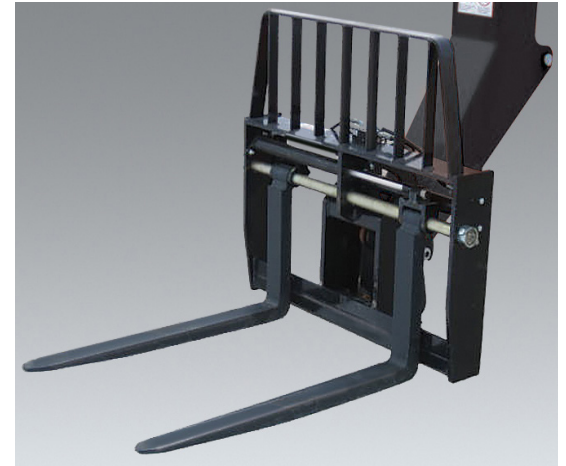


Dual Fork Positioning Carriage

The dual fork positioning carriage allows the operator to adjust the width between the forks without leaving the cab.

Features

- Dual fork positioning carriages require auxiliary hydraulics
- Standard up-and-down tilt on horizontal plane
- Dual fork positioning carriage is not compatible with fork mounted attachments
- Fork and Carriage sold separately



Current Production - Dual Fork Positioning Carriages
Available Through JLG Aftermarket Or With New Machine Orders

CARRIAGE SIZE			48 in.	48 in.	50 in.	50 in.	72 in.	72 in.
APPROX. WEIGHT			638 lbs.	695 lbs.	1090 lbs.	1202 lbs.	957 lbs.	1,035 lbs.
PART NO.			1001242506	1001242508	7301295	1001189211	1001282232	1001192342
FORK PIN NO.			70027283	70027283	90451058	70027283	70029054	70028507
MODEL	SN BREAKS	LOAD CHART/BOOKLET						
JLG	642, 943, 1043, 1055, 1255 ONLY	Software, Chart Library	1001187087 (Ref No.)					
	742	ALL	1001226012		•			
	943/1043	Without Outriggers	1001212420		•			
		With Outriggers	1001212419		•			
	1055	Prior To 0160074169	1001212227		•			
		0160074169 - Present	1001211156		•			
	1255	Prior To 0160074168	1001212225			•	•	
		0160074168 - Present	1001211153			•	•	
	1075	ALL	1001259238		•			
	1644	ALL	1001233430					•
1732	ALL	1001233431					•	
G5-18A	with the Universal (skid steer) quick coupler: 0160040809-Present	1001126677		•				
	with Standard Coupler: 0160040809-Present	1001126677	•					
SKYTRAK™	6036	0160069720 - 0160075649, incl 0160065792, 0160065798, 0160065824, 0160069383, 0160069411, 0160075653 & 0160075722	1001199500		•			
		0160075650 - Present, excl 0160075653 & 0160075722	1001211867		•			
	6042	0160069720 - 0160075656, incl 0160065792, 0160065798, 0160065824, 0160069383 & 0160069411	1001199504		•			
		0160075657 - Present	1001211869		•			
	8042	0160069722 - 0160075670, incl 0160065791, 0160065796, 0160065825, 0160065826, 0160069336, 0160069359 & 0160069441	1001199508		•			
		0160075671 - Present	1001211871		•			
	10042	0160069722 - 0160075987, incl 0160065791, 0160065796, 0160065825, 0160065826, 0160069336, 0160069359 & 0160069441	1001199512		•			
		0160075988 - Present	1001211873		•			
	10054	0160069722 - 0160075682, incl 0160065791, 0160065796, 0160065825, 0160065826, 0160069336, 0160069359, 0160069441 & 0160075696	1001199518		•			
		0160075683 - Present, excl 0160075696	1001211875		•			
12054	ALL	1001245474		•				

NOTES:

- Use only JLG approved attachments with proper material handler model/attachment load capacity charts displayed in the operator's cab.
- Never use your attachment as a work platform or personnel carrier.

Can't find the attachment you are looking for? Contact your JLG Aftermarket Parts representative at 1-877-JLG-LIFT or visit www.jlg.com.

Non-Current Production - Dual Fork Positioning Carriage, JLG
Available Through JLG Aftermarket Parts

CARRIAGE SIZE				50 in.
APPROX. WEIGHT				1090 lbs.
INCLUDED FORK LENGTH				48 in.
PART NO.				7301295
FORK PIN NO.				90451058
	MODEL	SN BREAKS	LOAD CHART BOOKLET	
JLG	642	ALL	1001212421	.
	G6-42A	0160037722 - 0160040659	1001110401	.
		0160040678 - Present	1001130739	.
	G9-43A	0160037671 - 0160040674, excl 0160040468 & 0160040672	1001110402	.
		0160040675 - Present, incl 0160040468 & 0160040672	1001130708	.
	G10-43A	0160037671 - 0160040674, excl 0160040468 & 0160040672	1001115257	.
		0160040675 - Present, incl 0160040468 & 0160040672	1001130844	.
	G10-55A	0160037690 - Present, incl 0160038505, 0160038507, 0160038324, 016003489 & 0160038493	1001115138	.
	G12-55A	0160037689 - Present	1001115540	.
	G15-44A	Prior To 0160074142	1001194130	.
0160074142 - Present		1001211953	.	

Non-Current Production - Dual Fork Positioning Carriage, SkyTrak
Available Through JLG Aftermarket Parts

CARRIAGE SIZE				50 in.
APPROX. WEIGHT				1090 lbs.
INCLUDED FORK LENGTH				48 in.
PART NO.				7301295
FORK PIN NO.				90451058
	MODEL	SN BREAKS	LOAD CHART BOOKLET	
SKYTRAK	6036	0160031200 - 0160069719, excl 0160065792, 0160065798, 0160065824, 0160069383 & 0160069411	1001199500	.
	6042	0160031200 - 0160069719, excl 0160065792, 0160065798, 0160065824, 0160069383 & 0160069411	1001199504	.
	8042	0160031235 - 0160069721, excl 0160065791, 0160065796, 0160065825, 0160065826, 0160069336, 0160069359 & 0160069441	1001199508	.
	10042	0160031425 - 0160069721, excl 0160065791, 0160065796, 0160065825, 0160065826, 0160069336, 0160069359 & 0160069441	1001199512	.
	10054	0160031255 - 0160069721, excl 0160065791, 0160065796, 0160065825, 0160065826, 0160069336, 0160069359 & 0160069441	1001199518	.

Non-Current Production - Dual Fork Positioning Carriage, Lull
Available Through JLG Aftermarket Parts

CARRIAGE SIZE				50 in.
APPROX. WEIGHT				1090 lbs.
INCLUDED FORK LENGTH				48 in.
PART NO.				7301295
FORK PIN NO.				90451058
	MODEL	SN BREAKS	LOAD CHART BOOKLET	
LULL	644E-42	Prior To 0160031500	7300628	.
		0160037900 - Present	1001110410	.
	944E-42	Prior To 0160031500	7301586	.
		0160037794 - Present, incl 0160045421	1001110411	.
	1044C-42	ALL	Consult Factory	
	1044C-54	ALL	Consult Factory	
	1044C-54 SII	Prior To 0160037893	1001105327	
0160037794 - Present		1001110409	.	

NOTES:

- Use only JLG approved attachments with proper material handler model/attachment load capacity charts displayed in the operator's cab.
- Never use your attachment as a work platform or personnel carrier.

Can't find the attachment you are looking for? Contact your JLG Aftermarket Parts representative at 1-877-JLG-LIFT or visit www.jlg.com.