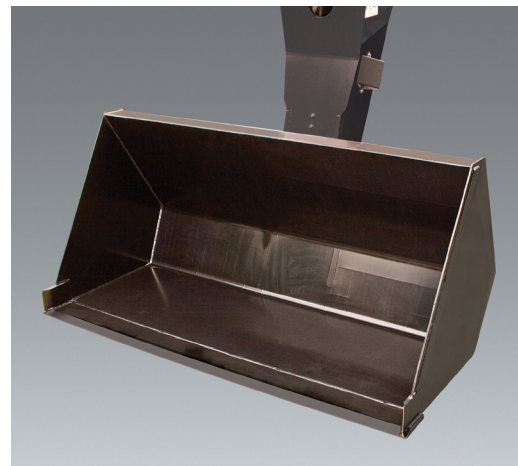


Material Bucket

Use the material bucket to scoop and carry loose material and debris like gravel or dirt. The material bucket can also be used for clean up around the job site. Material buckets are not designed for digging.

Features

- Available in different widths and capacities for various jobsite requirements
- Bucket teeth kits available for 0930008, 0930009, 0930015 and 0930016 material buckets (purchase part number 1001094612)



Current Production - Material Bucket

Available Through JLG Aftermarket Or With New Machine Orders

BUCKET WIDTH			72 in.	72 in.	73 in.	94 in.	94 in.	94 in.	96 in.	102 in.	
CAPACITY			1.0 cu. yd.	1.7 cu. yd.	1.0 cu. yd.	1.3 cu. yd.	2.6 cu. yd.	5.2 cu. yd.	1.5 cu. yd.	2.0 cu. yd.	
APPROX. WEIGHT			733 lbs.	838 lbs.	710 lbs.	2528 lbs.	1692 lbs.	2210 lbs.	899 lbs.	1089 lbs.	
PART NO.			1001100822	1001102323*	1001102324*	1001228427	1001192615	1001192616	1001100823	1001100824	
MODEL	SN BREAKS	LOAD CHART BOOKLET									
JLG	642, 943, 1043, 1055, 1255 ONLY	Software, Chart Library	1001187087 (Ref No.)								
	742	Without Outriggers	1001226012	•					•	•	
	943/1043	Without Outriggers	1001212420	•						•	•
		With Outriggers	1001212419	•						•	•
	1055	Prior To 0160074169	1001212227	•						•	•
		0160074169 - Present	1001211156	•						•	•
	1255	Prior To 0160074168	1001212225	•						•	•
		0160074168 - Present	1001211153	•						•	•
	1075	ALL	1001259238	•						•	•
	1644	ALL	1001233430				•	•	•		
1732	ALL	1001233431				•	•	•			
GS-18A	Quick coupler (hydraulic or manual)	1001102000		•	•						
SKYTRAK T4F	6036	0160069720 - 0160075649, incl 0160065792, 0160065798, 0160065824, 0160069383, 0160069411, 0160075653 & 0160075722	1001199500	•						•	•
		0160075650 - Present, excl 0160075653 & 0160075722	1001211867	•						•	•
	6042	0160069720 - 0160075656, incl 0160065792, 0160065798, 0160065824, 0160069383 & 0160069411	1001199504	•						•	•
		0160075657 - Present	1001211869	•						•	•
	8042	0160069722 - 0160075670, incl 0160065791, 0160065796, 0160065825, 0160065826, 0160069336, 0160069359 & 0160069441	1001199508	•						•	•
		0160075671 - Present	1001211871	•						•	•
	10042	0160069722 - 0160075987, incl 0160065791, 0160065796, 0160065825, 0160065826, 0160069336, 0160069359 & 0160069441	1001199512	•						•	•
		0160075988 - Present	1001211873	•						•	•
	10054	0160069722 - 0160075682, incl 0160065791, 0160065796, 0160065825, 0160065826, 0160069336, 0160069359, 0160069441 & 0160075696	1001199518	•						•	•
		0160075683 - Present, excl 0160075696	1001211875	•						•	•
12054	ALL	1001245474	•						•	•	

NOTES:

- Use only JLG approved attachments with proper material handler model/attachment load capacity charts displayed in the operator's cab.
- Never use your attachment as a work platform or personnel carrier.

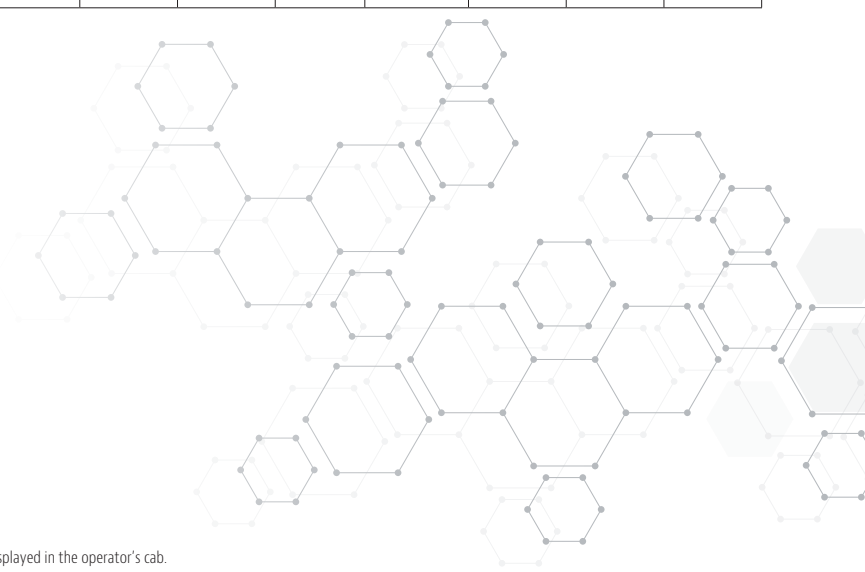
Can't find the attachment you are looking for? Contact your JLG Aftermarket Parts representative at 1-877-JLG-LIFT or visit www.jlg.com.

* Replacement cutting edge not available separately

ATTACHMENTS

Non-Current Production - Material Buckets, JLG Available Through JLG Aftermarket Parts

BUCKET WIDTH			60 in.	72 in.	74 in.	83 in.	83 in.	96 in.	96 in.	96 in.	102 in.	102 in.	
CAPACITY			.75 cu. yd.	1.0 cu. yd.	1.25 cu. yd.	1.05 cu. yd.	1.96 cu. yd.	1.18 cu. yd.	1.5 cu. yd.	2.35 cu. yd.	1.25 cu. yd.	2.0 cu. yd.	
APPROX. WEIGHT			500 lbs.	733 lbs.	675 lbs.	639 lbs.	940 lbs.	712 lbs.	899 lbs.	1041 lbs.	720 lbs.	1089 lbs.	
PART NO.			91405054	1001100822	91405055	0930008	0930009	0930015	1001100823	0930016	91405071	1001100824	
MODEL	SN BREAKS	LOAD CHART BOOKLET											
JLG	642	ALL	1001212421	.					.			.	
	619A	ALL	Consult Factory			.	.	.					
	723A	ALL	Consult Factory					.		.			
	G5-19A	ALL	Consult Factory			.	.						
	G6-23A	ALL	Consult Factory					.		.			
	G6-42A	Prior To 0160037722	1001105323	.	.							.	
		0160037722 - 0160040659	1001106001		.					.			.
		0160040678 - Present	1001130793		.					.			.
	G9-43A	Prior To 0160037671	1001105325	.	.							.	
		0160037671 - 0160040674, excl 0160040468 & 0160040672	1001106002		.					.			.
		0160040675 - Present, incl 0160040468 & 0160040672	1001130663		.					.			.
	G10-43A	Prior To 0160037671	1001130935	.	.							.	
		0160037671 - 0160040674, excl 0160040468 & 0160040672	100113013		.					.			.
		0160040675 - Present, incl 0160040468 & 0160040672	1001130935		.					.			.
	G10-55A	Prior To 0160037689	1001105707	.	.							.	
		0160037690 - 0160038486, incl 0160038505 & 0160038507, excl 0160038324, 0160038489 & 0160038493	1001106003		.					.			.
		0160038500 - Present, incl 0160038324, 0160038489 & 0160038493; excl 0160038505 & 0160038507	1001115135		.					.			.
	G12-55A	Prior To 0160037689	1001105326	.	.							.	
		0160037689 - 0160038533	1001106004		.					.			.
		0160038538 - Present	1001115536		.					.			.
G15-44A	Prior To 0160074142	1001194130		.					.			.	
	0160074142 - Present	1001211953		.					.			.	
TF6-42	ALL	Consult Factory	.	.							.		



NOTES:

- Use only JLG approved attachments with proper material handler model/attachment load capacity charts displayed in the operator's cab.
- Never use your attachment as a work platform or personnel carrier.

Can't find the attachment you are looking for? Contact your JLG Aftermarket Parts representative at 1-877-JLG-LIFT or visit www.jlg.com.

Non-Current Production - Material Buckets, Gradall
Available Through JLG Aftermarket Parts

BUCKET WIDTH			60 in.	60 in.	72 in.	74 in.	74 in.	96 in.	102 in.	102 in.	
CAPACITY			.75 cu yd.	.75 cu yd.	1.0 cu. yd.	1.25 cu. yd.	1.25 cu. yd.	1.5 cu. yd.	1.25 cu. yd.	2 cu. yd.	
APPROX. WEIGHT			465 lbs.	500 lbs.	733 lbs.	643 lbs.	675 lbs.	899 lbs.	720 lbs.	1089 lbs.	
PART NO.			90455049	91405054	1001100822	90555020	91405055	1001100823	91405071	1001100824	
MODEL	SN BREAKS	LOAD CHART BOOKLET									
GRADALL	522D/524D	ALL	Consult Factory	•			•				
	534C-10	ALL	Consult Factory	•			•				
	534D-6	ALL	Consult Factory	•			•				
	534D-9	Prior To 0160037689	1001102719	•			•				
		Prior To 0160037689	1001102720	•			•				
	534D-10	Prior To 0160037689	1001102721	•			•				
		0160037689 - Present	1001112753			•		•			•
	544D	Prior To 0160037689	1001102721			•		•			•
		0160037689 - Present	1001106008	•			•				
	G6-42P	Prior To 0160037689	1001105324		•			•		•	
0160037689 - Present		1001106005			•			•		•	

Non-Current Production - Material Buckets, SkyTrak
Available Through JLG Aftermarket Parts

BUCKET WIDTH			72 in.	96 in.	96 in.	102 in.	
CAPACITY			1.0 cu. yd.	1.25 cu. yd.	1.5 cu. yd.	2.0 cu. yd.	
APPROX. WEIGHT			733 lbs.	795 lbs.	899 lbs.	1089 lbs.	
PART NO.			1001100822	7110744	1001100823	1001100824	
MODEL	BREAK	LOAD CHART BOOKLET					
SKYTRAK	4266	ALL	Consult Factory		•		
	4270	ALL	Consult Factory		•		
	4290	ALL	Consult Factory		•		
	5028	ALL	Consult Factory		•		
	6036	Prior To 0160031200	Consult Factory		•		
		0160031200 - 0160069719, excl 0160065792, 0160065798, 0160065824, 0160069383 & 0160069411	1001199500	•		•	•
	6042	Prior To 0160031200	Consult Factory		•		
		0160031200 - 0160069719, excl 0160065792, 0160065798, 0160065824, 0160069383 & 0160069411	1001199504	•		•	•
	8042	Prior To 0160031235	Consult Factory		•		
		0160031235 - 0160069721, excl 0160065791, 0160065796, 0160065825, 0160065826, 0160069336, 0160069359 & 0160069441	1001199508	•		•	•
	10042	Prior To 0160031425	Consult Factory		•		
		0160031425 - 0160069721, excl 0160065791, 0160065796, 0160065825, 0160065826, 0160069336, 0160069359 & 0160069441	1001199512	•		•	•
	10054	Prior To 0160031255	Consult Factory		•		
		0160031255 - 0160069721, excl 0160065791, 0160065796, 0160065825, 0160065826, 0160069336, 0160069359 & 0160069441	1001199518	•		•	•

NOTES:

- Use only JLG approved attachments with proper material handler model/attachment load capacity charts displayed in the operator's cab.
- Never use your attachment as a work platform or personnel carrier.

Can't find the attachment you are looking for? Contact your JLG Aftermarket Parts representative at 1-877-JLG-LIFT or visit www.jlg.com.

ATTACHMENTS

Non-Current Production - Material Buckets, Lull Available Through JLG Aftermarket Parts

BUCKET WIDTH			72 in.	96 in.	96 in.	96 in.	102 in.	
CAPACITY			1.0 cu. yd.	1.25 cu. yd.	1.25 cu. yd.	1.5 cu. yd.	2.0 cu. yd.	
APPROX. WEIGHT			733 lbs.	540 lbs.	795 lbs.	899 lbs.	1089 lbs.	
PART NO.			1001100822	1101435	7110744	1001100823	1001100824	
MODEL	SN BREAKS	LOAD CHART BOOKLET						
LULL	644B-37	ALL	Consult Factory		•			
	644B-42	ALL	Consult Factory		•			
	644D-34	ALL	Consult Factory		•			
	644E-42	Prior To 0160031500	7300628			•		
		0160037900 - Present	1001106009	•			•	•
	844C-42	ALL	Consult Factory		•			
	944E-42	Prior To 0160031500	7301586			•		
		0160037794 - Present, incl 0160045421	1001134329	•			•	•
	1044C-54 SII	Prior To 0160037893	1001105327		•			
		0160037794 - Present	1001106011	•			•	•
	6K-37	ALL	Consult Factory		•			
	6K-42	ALL	Consult Factory		•			
	8K-42	ALL	Consult Factory		•			
	10K-42/10K-54	ALL	Consult Factory		•			



NOTES:

- Use only JLG approved attachments with proper material handler model/attachment load capacity charts displayed in the operator's cab.
- Never use your attachment as a work platform or personnel carrier.

Can't find the attachment you are looking for? Contact your JLG Aftermarket Parts representative at 1-877-JLG-LIFT or visit www.jlg.com.