

HOSTILE ENVIRONMENT KITS

RETROFIT KITS



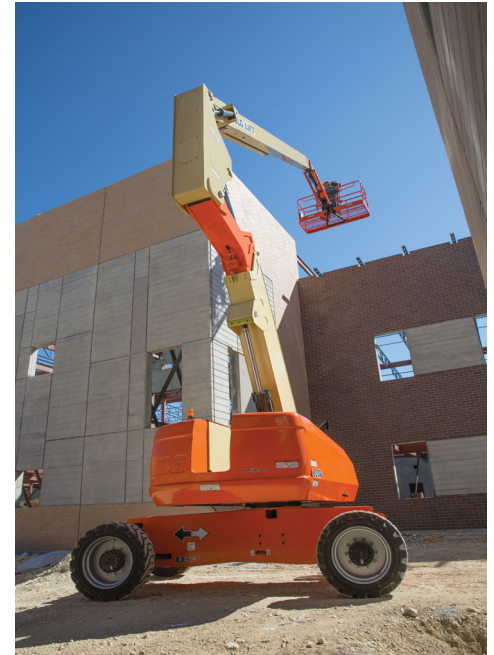
DON'T LET DUST GET YOU DOWN

Jobsites are not always the cleanest places to operate machinery. Whether your equipment is being used in the oil fields, salt mines, or on a construction site, the atmosphere around it can sometimes be extremely dusty. These fine particles can find their way into the smallest of crevices, and their abrasive nature can be very destructive to hydraulic components and smooth surfaces.

JLG knows it is important to protect against abrasive wear and is pleased to introduce Hostile Environment Kits. These kits come with everything necessary to install protective wipers on the boom and bellows on the exposed cylinders, to keep those invasive dust particles away from the polished surfaces and seals that allow your JLG boom lift to operate so smoothly.

Conquer the jobsite with a Hostile Environment Kit, offering:

- Complete kits containing all necessary parts
- Simple ordering process with one part number
- Model and serial number specific



JLG Models	Serial Number Breaks	JLG Kit P/N
E300AJ/ AJP	All	1001241391
340AJ/ H340AJ	All	1001241392
400S, 400S HC3	Prior to S/N 0300115395 [with Fixed Axle]	1001241393
	Prior to S/N 0300115395 [with Oscillating Axle]	1001241395
	0300115396 to 0300161284	1001241393
	0300161285 to 0300203770	1001204921
	0300203771 to Present	1001241396
450AJ ¹	0300201991 to Present	1001241397
450AJ HC3	0300281039 to Present	1001296424
460SJ ¹	Prior to S/N 0300115395 [with Fixed Axle]	1001241399
	Prior to S/N 0300115395 [with Oscillating Axle]	1001241401
	0300115396 to 0300161284	1001241399
	0300161285 to 0300203770	1001204922
	0300203771 to Present	1001241402
460SJ HC3	All	1001281421
600A [7' Chassis]	0300087000 to Present	1001241405
600A [8' Chassis]	0300087000 to Present	1001204923
600AJ [7' Chassis]	0300087000 to Present	1001241406
600AJ ¹ [8' Chassis]	0300087000 to Present	1001204924

¹ Excludes HC3 (High Capacity) models

Order Today

Online: onlineexpress2.jlg.com

Call: 1-877-554-5438 | Fax: 1-800-733-8939



JLG INDUSTRIES, INC.
Toll-free US 877-JLG-LIFT
JLG.com

An Oshkosh Corporation Company

HOSTILE ENVIRONMET KITS

RETROFIT KITS



JLG Models	Serial Number Breaks	JLG Kit P/N
600AJ HC3	All	1001281422
600S, 600S HC3	Prior to S/N 0300087000	1001204925
	0300087000 to Present (2WS)	1001238927
	0300087000 to Present (4WS)	1001238928
660SJ ¹	Prior to S/N 0300087000	1001204926
	0300087000 to Present (2WS)	1001238929
	0300087000 to Present (4WS)	1001238930
660SJ HC3	All	1001281424
E/M600J/JP	All (with Fixed Axle)	1001241407
	All (with Oscillating Axle)	1001241408
740AJ	All	1001241409
800A	Prior to 0300183034 (2WS) (with Fixed Axle)	1001241410
	Prior to 0300183034 (2WS) (with Oscillating Axle)	1001241411
	Prior to 0300183034 (4WS) (with Fixed Axle)	1001241412
	Prior to 0300183034 (4WS) (with Oscillating Axle)	1001204927
	0300183034 to Present (2WS)	1001241410
	0300183034 to Present (4WS)	1001241412
800AJ ¹	Prior to 0300183034 (2WS) (with Fixed Axle)	1001241413
	Prior to 0300183034 (2WS) (with Oscillating Axle)	1001241414
	Prior to 0300183034 (4WS) (with Fixed Axle)	1001241415
	Prior to 0300183034 (4WS) (with Oscillating Axle)	1001204928
	0300183034 to Present (2WS)	1001241413
	0300183034 to Present (4WS)	1001241415
800AJ HC3	All	1001281423
800S ¹	All	1001204929
800S HC3	All	1001281420
860SJ ¹	All	1001241416
860SJ HC3	All	1001281419
1200/1350SJP	All (with Fixed Axle)	1001241417
	All (with Oscillating Axle)	1001204930
1250AJP	All	1001241418
1500AJP	All	1001241419
1500SJ	All	1001241420
1850SJ	All	1001241422

¹ Excludes HC3 (High Capacity) models

Order Today

Online: onlineexpress2.jlg.com

Call: 1-877-554-5438 | **Fax:** 1-800-733-8939



JLG INDUSTRIES, INC.
Toll-free US 877-JLG-LIFT
JLG.com

An Oshkosh Corporation Company