

3013 AG TELEHANDLER



KEY FEATURES

Work in Confined Environments:

Ultra-compact and highly maneuverable design

Enhance Your Capabilities:

Excellent reach into truck beds, trailers and over obstacles

Keep Your Surroundings Intact:

Rear-wheel steering for less ground disturbance

Transportability:

5,280-lb GVW, easily transported with work truck and trailer

PERFORMANCE

Rated Capacity	2,700-lb	1,225-kg
Maximum Lift Height	13-ft 1-in	4-m
Load at Max Height	1,555-lb	705-kg
Maximum Forward Reach	7-ft 1-in	2.2-m
Load at Max Reach	1,200-lb	544-kg
Lift Speed (boom retracted)		
Up	10.9 sec	
Down	7.7 sec	
Boom Speed		
Extended	7.5 sec	
Retracted	4.5 sec	
Top Travel Speed	10.5 mph	17 kph
Drawbar Pull (loaded)	2,623-lb	11.7-kN
Outside Turning Radius	117-in	3-m
Operating Weight	5,280-lb	2,400-kg



SKYTRAK

STANDARD SPECIFICATIONS

Engine

Make and Model	Kubota V-1505	
No. of Cylinders	4	
Displacement	91.2 cu in.	1.5 L
Gross Power Basic	24.8 hp	18.5 kW
Maximum Torque	68.3 lb-ft	92.6 Nm
Fuel Tank Capacity	14.5 gal	55 L

Hydraulic System

Capacity	8.5 gal	32 L
Gear Pump		
Holding valves.		

Auxiliary hydraulics used for all attachments equipped with cylinders or other hydraulic components. Consists of valves, controls and hydraulic lines.

Transmission

Hydrostatic
1-speed forward and 1-speed reverse.

Axles

Limited Slip
Rear Oscillating
Four Wheel Drive

Tires

Standard	11.0/65 x 12 Pneumatic Ag Tread Tires
Optional	Foam-Filled Ag Tread Tires, Pneumatic Non-marking Tires, Foam-Filled Non-marking Tires, Turf Tires

Brakes

Emergency brake spring applied and hydraulically released.
Service brake with inching.

Cab

- Adjustable suspension seat with retractable seat belt
- Certified ROPS/FOPS structure
- Integrated arm rest
- Longitudinal Stability Indication System
- Rear view mirrors
- Single joystick controls

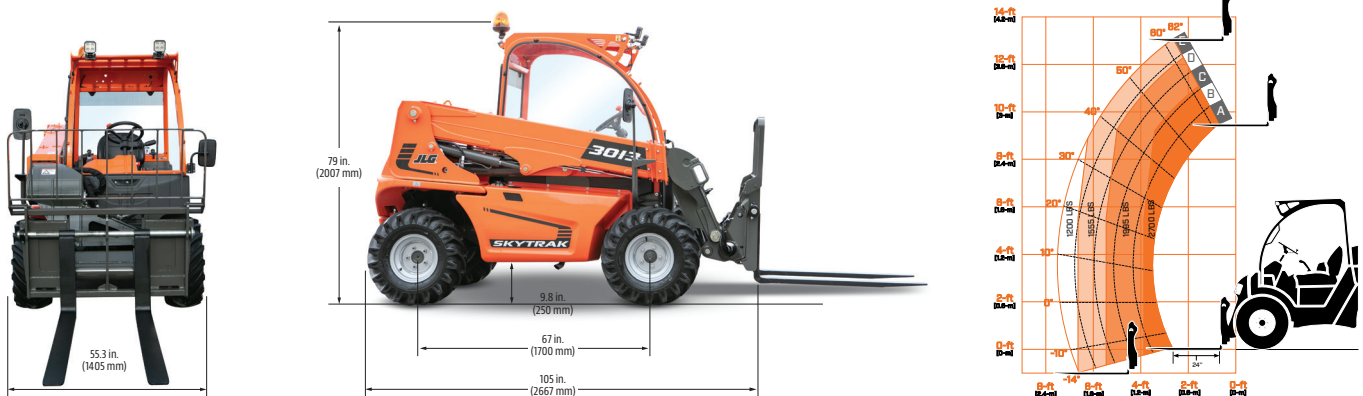
ATTACHMENTS

Standard Carriage	41-in	1.0-m
Universal Carriage	41-in	1.0-m
Pallet Forks	48-in	1.2-m
General Purpose Bucket (Universal or JLG Coupler)	55-in	1.4-m

ACCESSORIES & OPTIONS

- 2 in. Ball Hitch
- Cold Weather Package
- Enclosed Cab
- Front Brick Guard
- Work Lights
- Wiper Package

DIMENSIONS & LOAD CHART



JLG Industries, Inc.

1 JLG Drive
McCconnellsburg, PA 17233-9533
Telephone: 717-485-5161 | Toll-free in U.S.: 877-JLG-LIFT
Fax: 717-485-6417
www.jlg.com

An Oshkosh Corporation Company

The JLG "1, 2 & 5" Warranty

We provide coverage for one (1) full year on the entire machine, two (2) full years or 2,000 hours on the drivetrain and cover all specified major structural components for five (5) years. Due to continuous product improvements, we reserve the right to make specification and/or equipment changes without prior notification.

