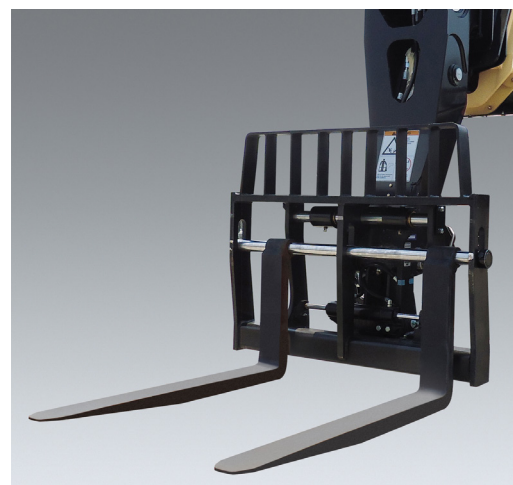


# Side-Shift Carriage

The side-shift carriage allows the operator to move the load left or right for precise placement.

## Features

- Side-shift carriages require auxiliary hydraulics
- Standard up-and-down tilt on horizontal plane



**Current Production - Side-Shift Carriages**  
Available Through JLG Aftermarket Or With New Machine Orders

CARRIAGE SIZE			48 in.	48 in.	48 in.	72 in.
APPROX. WEIGHT			751 lbs.	768 lbs.	930 lbs.	1256 lbs.
PART NO.			1001242501	1001104025*	1001242644	1001192344
FORK PIN NO.			70029504	70022105	N/A	N/A
MODEL	SN BREAKS	LOAD CHART BOOKLET				
JLG	642, 943, 1043, 1055, 1255 ONLY	Software, Chart Library	1001187087 (Ref No.)			
	742	ALL	1001226012		•	
	943/1043	Without Outriggers	1001212420			•
		Without Outriggers	1001212419			•
	1055	Prior To 0160074169	1001212227			•
		0160074169 - Present	1001211156			•
	1255	Prior To 0160074168	1001212225			•
		0160074168 - Present	1001211153			•
	1075	ALL	1001259238			•
	1644	ALL	1001233430			•
1732	ALL	1001233431			•	
G5-18A	0160040809 - Present	1001126677	•	•		
SKYTRAK T4F	6036	0160069720 - 0160075649, incl 0160065792, 0160065798, 0160065824, 0160069383, 0160069411, 0160075653 & 0160075722	1001199500			•
		0160075650 - Present, excl 0160075653 & 0160075722	1001211867			•
	6042	0160069720 - 0160075656, incl 0160065792, 0160065798, 0160065824, 0160069383 & 0160069411	1001199504			•
		0160075657 - Present	1001211869			•
	8042	0160069722 - 0160075670, incl 0160065791, 0160065796, 0160065825, 0160065826, 0160069336, 0160069359 & 0160069441	1001199508			•
		0160075671 - Present	1001211871			•
	10042	0160069722 - 0160075987, incl 0160065791, 0160065796, 0160065825, 0160065826, 0160069336, 0160069359 & 0160069441	1001199512			•
		0160075988 - Present	1001211873			•
	10054	0160069722 - 0160075682, incl 0160065791, 0160065796, 0160065825, 0160065826, 0160069336, 0160069359, 0160069441 & 0160075696	1001199518			•
		0160075683 - Present, excl 0160075696	1001211875			•
12054	ALL	1001245474			•	

For SkyTrak Legacy machines, please refer to Non-Current Production SkyTrak table.

\*Used with Universal Quick Switch (Skid Steer) Coupler.

**NOTES:**

- Use only JLG approved attachments with proper material handler model/attachment load capacity charts displayed in the operator's cab.
  - Never use your attachment as a work platform or personnel carrier.
- Can't find the attachment you are looking for? Contact your JLG Aftermarket Parts representative at 1-877-JLG-LIFT or visit [www.jlg.com](http://www.jlg.com).

# ATTACHMENTS

## Non-Current Production - Side-Shift Carriages, JLG Available Through JLG Aftermarket Parts

CARRIAGE SIZE				50 in.	50 in.	50 in.	
APPROX. WEIGHT				898 lbs.	930 lbs.	905 lbs.	
PART NO.				1001193799	1001242644	1170002	
FORK PIN NO.				N/A	N/A	7028136	
MODEL	SN BREAKS		LOAD CHART BOOKLET				
JLG	642	ALL	1001212421		.		
	619A	ALL	Consult Factory			.	
	723A	ALL	Consult Factory			.	
	G5-19A	ALL	1706970			.	
	G6-23A	ALL	1706975			.	
	G6-42A	0160037722 - 0160040659		1001110401		.	
		0160040678 - Present		1001130739		.	
	G9-43A	0160037671 - 0160040674, excl 0160040468 & 0160040672		1001110402		.	
		0160040675 - Present, incl 0160040468 & 0160040672		1001130708		.	
	G10-43A	0160037671 - 0160040674, excl 0160040468 & 0160040672		1001115257		.	
		0160040675 - Present, incl 0160040468 & 0160040672		1001130844		.	
	G10-55A	0160037690 - Present, incl 0160038505, 0160038507, 0160038324, 0160038489 & 0160038493		1001115138		.	
	G12-55A	0160037689 - Present		1001115540		.	
	G15-44A	Prior To 0160074142		1001194130	.		
		0160074142 - Present		1001211953	.		

## Non-Current Production - Side-Shift Carriages, SkyTrak Available Through JLG Aftermarket Parts

CARRIAGE SIZE				50 in.
APPROX. WEIGHT				930 lbs.
PART NO.				1001242644
FORK PIN NO.				N/A
MODEL	SN BREAKS		LOAD CHART BOOKLET	
SKYTRAK	6036	0160031200 - 0160069719, excl 0160065792, 0160065798, 0160065824, 0160069383 & 0160069411	1001199500	.
	6042	0160031200 - 0160069719, excl 0160065792, 0160065798, 0160065824, 0160069383 & 0160069411	1001199504	.
	8042	0160031235 - 0160069721, excl 0160065791, 0160065796, 0160065825, 0160065826, 0160069336, 0160069359 & 0160069441	1001199508	.
	10042	0160031425 - 0160069721, excl 0160065791, 0160065796, 0160065825, 0160065826, 0160069336, 0160069359 & 0160069441	1001199512	.
	10054	0160031255 - 0160069721, excl 0160065791, 0160065796, 0160065825, 0160065826, 0160069336, 0160069359 & 0160069441	1001199518	.

## Non-Current Production - Side-Shift Carriages, Lull Available Through JLG Aftermarket Parts

CARRIAGE SIZE				50 in.
APPROX. WEIGHT				930 lbs.
PART NO.				1001242644
FORK PIN NO.				N/A
MODEL	SN BREAKS		LOAD CHART BOOKLET	
LULL	644E-42	0160037900 - Present	1001106009	.
	944E-42	0160037794 - Present, incl 0160045421	1001134329	.
	1044C-54.SII	0160037794 - Present	1001106011	.

### NOTES:

- Use only JLG approved attachments with proper material handler model/attachment load capacity charts displayed in the operator's cab.
  - Never use your attachment as a work platform or personnel carrier.
- Can't find the attachment you are looking for? Contact your JLG Aftermarket Parts representative at 1-877-JLG-LIFT or visit [www.jlg.com](http://www.jlg.com).