

2506

TELEHANDLER



Performance

Rated Load Capacity	2500 kg
Maximum Lift Height	5.7 m
Capacity at Max. Height	2000 kg
Maximum Forward Reach	3.3 m
Capacity at Max. Fwd. Reach	790 kg
Lift Speed (boom retracted)	
Up	7.2 sec
Down	5.6 sec
Boom Speed	
Extended	7.2 sec
Retracted	5.0 sec
Top Travel Speed	24 km/h
Outside Turning Radius (over tyres)	3.2 m
Operating Weight (no attachment)	4970 kg

Standard Specifications

Engine

Make and Model	Deutz TD 2.2 L3
Displacement	2.2 L
Standard engine gross power	44.5 kW (60hp)
Maximum torque	205 Nm
Fuel Tank Capacity	69.3 L

Transmission

- 4WD
- Hydrostatic

Axles

High Bias, Limited Slip Differential on front axles
Planetary on front and rear axles

Brakes

Service Brakes	Inboard wet disc on front axle
Parking Brakes	Wet disc spring- applied hydraulic release

Tyres

Standard 12 x 16.5 (Pneumatic)

Cab

- Air Conditioned fully glazed all weather cab
- ROPS and FOPS certified cab
- Single Joystick Proportional Controls
- Adjustable Seat
- Tilt Steering Column
- Rear View Mirrors
- Radio Ready

Steering 4-Wheel

- Power steering with steering wheel spinner
- Three Steering Modes - Two wheel/Four wheel/ Crab

Hydraulic System-Implement

Capacity	68 L
Variable Displacement Piston Pump	
Max. Auxilliary Flow to boom Head	68 lpm



Accessories & Options

- Brick Guard
- Battery Disconnect Switch
- Air Conditioning
- Road Light Package
- Work Light Package
- ClearSky Smart Fleet
- Reverse Sensing System
- Multifunctional Display with Reversing Camera
- Tow Hitch

Attachments

Standard:

- 1.2 m Standard Carriage

Optional:

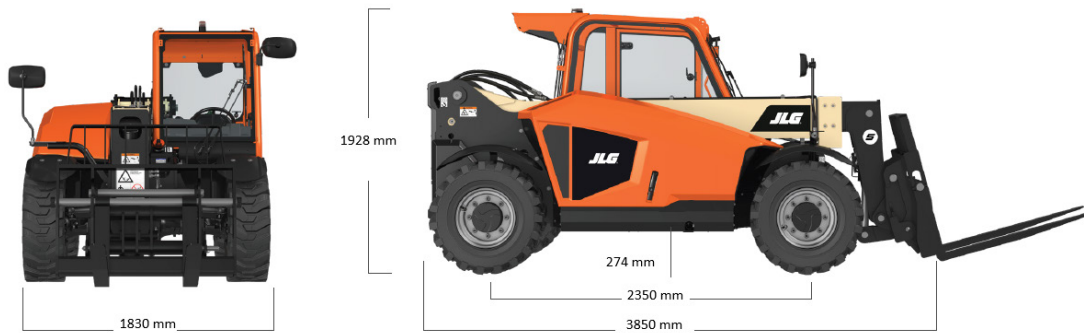
- Fork Extensions
- Fork Positioning Carriage
- Side Shift with Fork Positioning Carriage
- Fork Rotator Carriage
- Pallet Forks
- GP Buckets (1.0 m³, 1.4 m³, 1.5 m³)
- Grapple Bucket
- 4-in-1 Bucket
- Lifting Hook
- Jib
- Auger Drive (6", 12", 18")

2506 TELEHANDLER

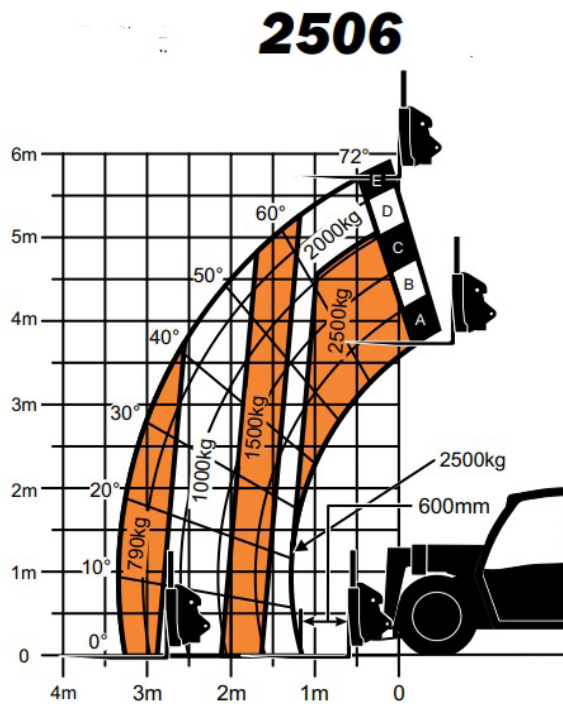


Dimensions

All dimensions are approximate.



Load Chart



The JLG "2 & 5" Warranty

JLG Industries, Inc. backs its products with its exclusive "2 & 5" Warranty. We provide coverage on all products for two (2) full years and cover all specified major structural components for five (5) years. Due to continuous product improvements, we reserve the right to make specification and/ or equipment changes without prior notification. This machine meets or exceeds AS10896.1 2019 as originally manufactured for intended applications.

JLG Industries (Australia)

358 Park Road
Regents Park, NSW 2143
Telephone 02 8718 6300
Fax 02 8718 6377
www.jlg.com.au

An Oshkosh Corporation Business