



KEY SPECS

Capacity
3,500-lb

Lift Height
13-ft 1-in

Travel Speed
9.3 mph / 15 km/h

Charge Time
11-12 hours (110V) / 2-3 hours (220V)
*Approximate battery charge time from 20% to 80%

KEY FEATURES

- Zero Emissions: Ideal for working in emission-free spaces, such as urban, residential, and municipal environments, along with indoor applications.
- Low Noise: Enabling work in noise sensitive environments and allows for extended working hours and overnight shifts.
- Lower Operating Cost: Reduced energy cost and less service time thanks to the maintenance-free battery and optimized service access.
- Standard Attachments and Accessories: 41-in carriage with bolt-on backrest, 48-in pallet forks, and mechanical universal skid steer coupler.

ACCESSORIES & OPTIONS

- Boom Prop
- Enclosed Cab
- Front Brick Guard
- High Aux Flow (10.5 gpm / 3045 psi)
- Hydraulic Universal Skid Steer Coupler
- Road Lights
- Wiper Package
- Work Lights

ATTACHMENTS

| | | |
|------------------------|-------------------------|------------------------|
| Pallet Forks | 1.4-in x 3.9-in x 40-in | 35-mm x 100-mm x 1.0-m |
| General Purpose Bucket | 63-in | 1.6-m |

STANDARD FEATURES

- 2WD & 4WD Modes
- 41-in Carriage with Bolt-On Backrest
- 48-in Pallet Forks
- Auxiliary Hydraulics
- Backup Alarm
- Hourmeter
- Integrated Electronic Display
- LED Motion / Amber Beacon (CS550) with Clearsky Smart Fleet™ Hardware
- Longitudinal Stability Indication System (LSI)
- Rear Pivot Steering
- Seatbelt Engagement & Operator Assurance
- Tow Hitch
- Universal Skid Steer Coupler (Mechanical)

STANDARD SPECIFICATIONS

Performance

| | |
|----------------------------------|------------------------|
| Rated Capacity | 3,500-lb / 1,600-kg |
| Maximum Lift Height | 13-ft 1-in / 4-m |
| Load at Max Height | 1,800-lb / 815-kg |
| Maximum Forward Reach | 7-ft 7-in / 2.31-m |
| Load at Max Reach | 1,415-lb / 640-kg |
| Lift Speed (Boom Retracted) Up | 11 sec |
| Lift Speed (Boom Retracted) Down | 8 sec |
| Boom Speed Extended | 7.0 sec |
| Boom Speed Retracted | 4.6 sec |
| Top Travel Speed (4-Speed) | 9.3 mph / 15 km/h |
| Drawbar Pull (Loaded) | 3,966 lb-ft / 17.64 kN |
| Outside Turning Radius | 134-in / 3.4-m |
| Operating Weight | 7,340-lb / 3,330-kg |

Power Source

| | |
|-------------------------|---|
| Battery | 48V Lithium-Ion Batteries - 6 x 3.1 kWh with integrated battery heaters |
| Charger | Dual On-Board Battery Chargers - 2 x 3 kW |
| Charging Connector | IEC60309, 230V, 32A |
| Charging Adapter (110V) | 1.5-ft IEC60309 to NEMA 5-15P |
| Charging Adapter (220V) | 1.5-ft IEC60309 to NEMA 6-50P |
| Drive | Electric Drive Motor (8.6 kW) Electric Implement Motor (15 kW) |
| Battery Capacity | 18.6 kWh |
| Maximum Torque | 99 lb-ft / 134 Nm |

Transmission

Electric 2-Speed Transmission

Axles

High bias limited slip differential on front axle.
Planetary on front and rear axles.

Brakes

Service brakes are inboard wet disc brake on front axle.
Parking brakes are wet disc spring-applied hydraulic release.

Tires

| | |
|----------|---|
| Standard | 10.0/75-15.3 Pneumatic Ag Tread Tires |
| Optional | 10.0/75-15.3 Foam-Filled Ag Tread Tires 10-16.5 Turf Tires |

Cab

- Adjustable Suspension Seat
- Certified ROPS/FOPS structure
- Horn
- Integrated Arm Rest
- Single Joystick Proportional Controls
- Rear View Mirrors

Steering 2-Wheel

Rear Pivot Power Steering

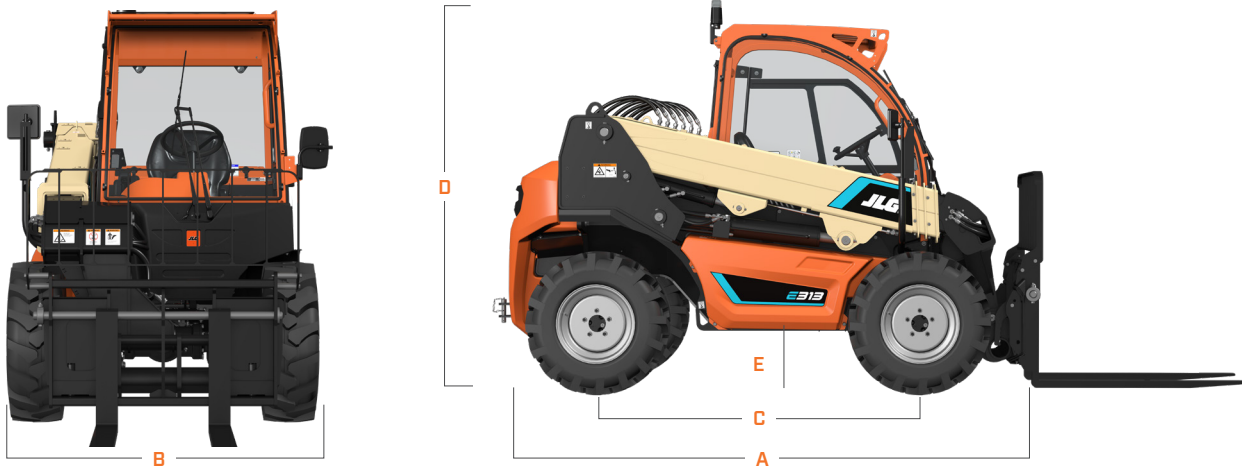
Hydraulic System-Implement

| | |
|--------------------------------------|--------------------|
| Capacity | 8.72 gal / 33 L |
| Max. Auxiliary Flow to the Boom Head | 7.6 gpm / 2610 psi |

- Triple-section gear pump
- Auxiliary hydraulics used for all attachments equipped with cylinders or other hydraulic components.

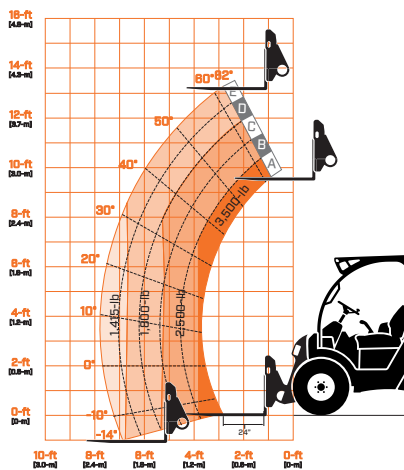
DIMENSIONS

All dimensions are approximate



| | | | |
|-------------------|---------------------|---------------------|--------------------|
| A. Machine Length | 10-ft 1-in / 3.08-m | D. Machine Height | 6-ft 8-in / 2.03-m |
| B. Machine Width | 4-ft 10-in / 1.48-m | E. Ground Clearance | 10.9-in / 277-mm |
| C. Wheelbase | 5-ft 9-in / 1.75-m | | |

LOAD CHART



We provide coverage for one (1) full year, and cover all specified major structural components and batteries for five (5) years. Due to continuous product improvements, we reserve the right to make specification and/or equipment changes without prior notification. This machine meets or exceeds applicable ANSI and CSA requirements based on machine configuration as originally manufactured for intended applications. Please reference the serial number plate on the machine for additional information.



Oshkosh-JLG (S) Technology Equipment Pte Ltd
 32 Jalan Kilang Barat
 Kewalram House, 159364
 Singapore
 Phone: +65 6591 9368