

# JLG MOBILE ANALYZER TOOLS



## Increase Jobsite Flexibility with New Technologies

The new JLG® Mobile Analyzer is a Wi-Fi-enabled evolution of the handheld Analyzer Kit, allowing technicians to do the same analysis they are currently doing with the handheld kit. However, this new tool for Apple and Google operating system devices, allows for an extended operating range of up to 150 ft.

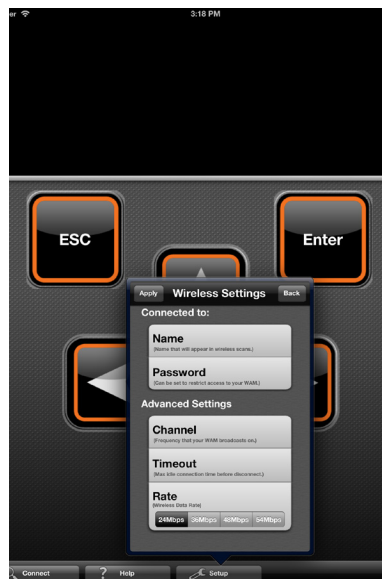
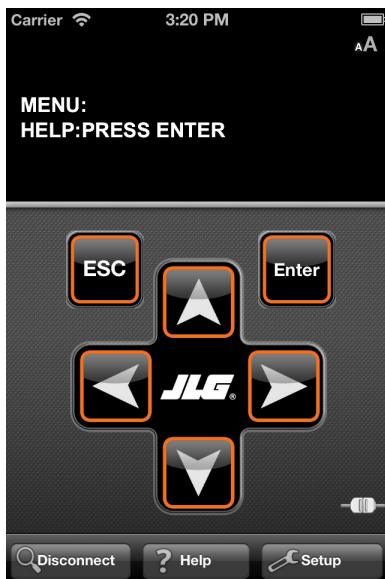
### Features and Benefits Include:

- Compatible with Apple iOS 5.0 and up, plus Android API 8 and up
- Works with JLG products that are equipped with Advanced Design Electronics (ADE)
- Allows for extended operator range of up to 150 ft
- Available in multiple languages, with more languages to be added
- The JLG Mobile Analyzer is interchangeable between machines (Note: it can only be connected to one mobile device at a time)
- Analyzer training is included as part of all JLG factory training
- Displays full description read-outs instead of abbreviated scrolling text



**JLG PART NUMBER**

1001147542



**Order Today**

Online: [onlineexpress2.jlg.com](http://onlineexpress2.jlg.com) | Call: 1-877-554-5438 | Fax: 1-800-733-8939

JLG Industries, Inc  
1 JLG Drive | McConnellsburg, PA 17233-9533 | T: 717-485-5161 | Toll-Free in US 877-JLG-LIFT  
F: 717-485-6417 | [partsprograms@jlg.com](mailto:partsprograms@jlg.com)  
[www.jlg.com](http://www.jlg.com)

An Oshkosh Corporation Company

ANALYZER\_0116