

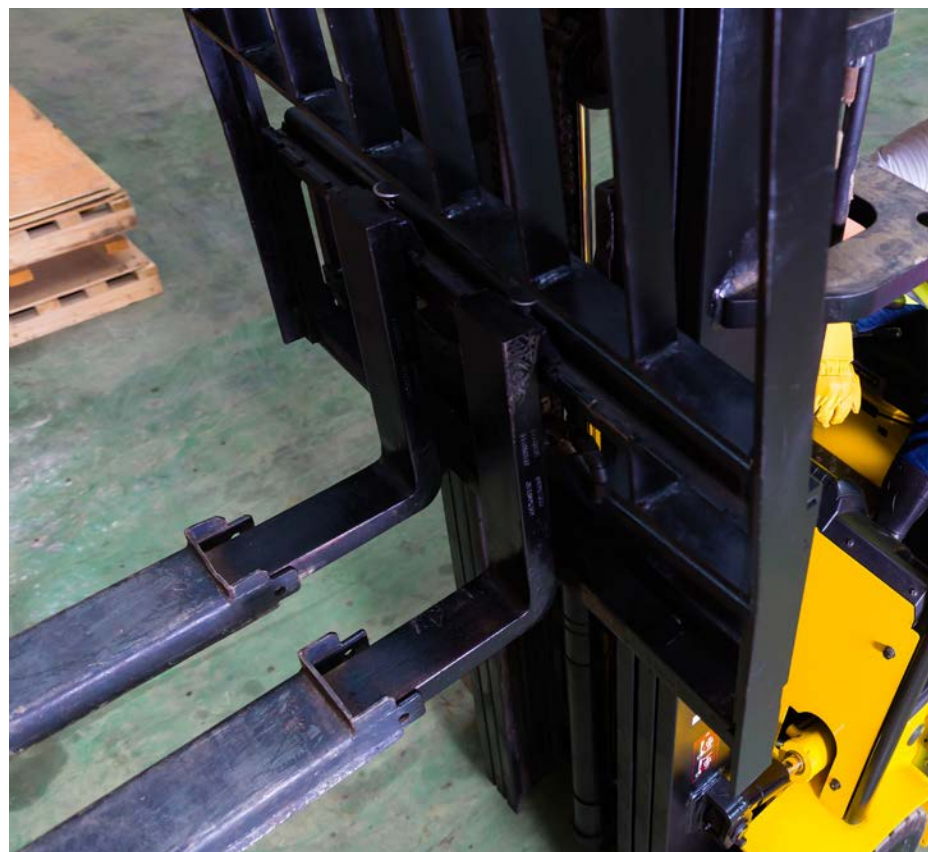


MaxQuip[™]

FORK CATALOG

COIL FORKS • CORRUGATED HANDLING FORKS • DRUM FORKS • FOLDING FORKS • GYPSUM FORKS • INVERTED FORKS

JLG[®]





MaxQuip™ competitive parts include various manufacturers and industries to service your complete fleet.

Common Forks:

Features and Benefits	4
Shaft Pallet Forks	5-7
Shaft Cubing Forks	8
Shaft Lumber Forks	9
Palletized Shaft Forks	10-12
ITA Hook Forks Class II	13-15
ITA Hook Forks Class III	15-17
ITA Hook Forks Class IV	18-19
Palletized ITA Forks	20-21
Block Forks	22

Specialty Forks:

Anti-Slip Forks	23
Bolt-On Forks	24
Carpet Pole	24
Coil Boom	25
Coil Forks	26
Corrugated Handling Forks	26
Drum Forks	27
Folding Forks	28
Gypsum Forks and Pads	29
Inverted Forks	30
Quick Detach Forks	31
Peek-A-Boo Forks	32
Roller Forks	32
Rotator Forks	33
Spark Retardant Forks	34
Stainless Steel Forks	35
Tire Forks	36
Pin Kit Assemblies	37

Covers, Extensions and Fork Caliper:

DAGS - Magnetic Fork Covers	38
Fork Extensions	39
Fork Wear Caliper	40

Worksheets:

Collecting Fork Shaft Data	44
Fork Tips and Bevels	45
Capacity Charts	46-47
New Fork Request Form - ITA Forks	48
New Fork Request Form - Shaft Forks	49
New Fork Request Form - Bolt-On Forks	50
New Fork Request Form - Forks to Fit Square Carriage Plates	51

MaxQuip Forks

We provide the only full line of forks made in North America, with engineering and manufacturing capabilities that can produce any size or style fork needed. Each fork is created with industry experience, strict material specifications and advanced manufacturing processes. A stringent material requirement and a strict traceability process assures top quality from raw material to finished product. The forks are designed and tested to meet or exceed 1 million lift cycles per ISO 2330. A material certification is available for every fork manufactured.

Features and Benefits

- Qualify for free freight on economy orders over \$1000 when shipping to locations within the continental United States
- Any fork can be combined with other economy orders to qualify for \$1000 free freight when shipping to locations within the continental United States
- Highest quality steel
- Meets or exceeds latest testing in national and international standard (ISO 2328 and ISO 2330, ANSI ITSDF B56.1 and ANSI ITSDF B56.6) for mounting details, load, fatigue and impact tests.
- Competitive pricing
- Custom designs in any size
- Save time and enjoy the convenience of placing one order for all your fork needs!
- Save money with our pallet pricing - buy more, save more!
- Longer lasting forks made from premium products.

Order Details and Information

- Easy online ordering
- Consolidate your fork order to save money in transactions and freight
- Over 150 sizes available for immediate shipping
- Shipping from six convenient North American locations - Oregon, California, Texas, South Carolina, Ohio, and one location in Ontario, Canada (NOTE: One order could ship from multiple locations)
- Forks in stock ordered before noon EST will ship the same day
- Forks in stock ordered after noon EST will ship within 24 hours
- Forks not in stock, special order forks and forks in palletted quantities have a lead time of 8-10 working days ONLY
- Add to your yearly parts return
- Any customized fork will not qualify as a returnable item.
- Forks returned at any time may be subject to a 10% re-stocking fee

To Place an Order

- Online: onlineexpress2.jlg.com
- Call: 1-877-JLG-LIFT (1-877-554-5438)
- Fax: 1-800-733-8939
- Email: partsprograms@jlg.com





Shaft Forks - Pallet

The pallet fork is designed to handle palletized material and other loads that require transportation and placement.

Features

- Forged heel, single taper, double taper, with or without peek-a-boo backs are available.
- Listed forks include standard heel radius (unless otherwise noted).
- Qualify for free freight on economy orders over \$1000 when shipping to locations within the continental United States
- Any fork can be combined with other economy orders to qualify for \$1000 free freight when shipping to locations within the continental United States

To request a size not listed, please see the New Shaft Fork Request Form on page 49.

Fork Taper	Capacity at 24" Load Center (lbs./pair)	Thickness	Width	Length	Eye Diameter	Fork Drop	Description	Tube			JLG Part Number
								ID	OD	Location	
Pallet	5000	1.5"	4"	48"	2.25"	24"	FORK, Pallet, 2.25 eye, 1.5x4x48, 24 fork drop				70011898
	5000	1.75"	4"	48"	2"	25.5"	FORK, Pallet, 2 eye, 1.75x4x48, 25.5 fork drop				70011717*
	5100	1.75"	6"	60"	2.25"	24"	Fork, Shaft 1.75x6x60, 2.25 eye, 24" drop FT				70012011
	5500	1.5"	4"	48"	2.25"	20.25"	FORK, Pallet, 1.5x4x48, ID 2.25, OD 3.5	2.25"	3.5"		70011858
	6000	1.75"	4"	48"	2"	22"	FORK, Pallet, 2 eye, 1.75x4x48, 22 fork drop				70011393*
	6000	2"	4"	48"	2.25"	22.42"	FORK, Pallet, 2x4x48, 532	2.31"	3.5"	offset 32	70011845
	6000	2"	4"	60"	2"	22.42"	FORK, Shaft, 2 eye, 2x4x60			offset 32	70011826
	6400	1.5"	5"	60"	2.25"	22.5"	FORK, Pallet, 1.5x5x60 22.5 drop	2.31"	3.5"		70011971
	6400	2"	5"	60"	2.25"	22.5"	FORK, Pallet, 2x5x60 22.5 drop	2.31"	3.5"		70011972
	6464	2.5"	4"	48"	2"	24"	Fork, Shaft, 2.5x4x48, 2 eye, 24 drop				70011919
	6800	1.5"	5"	48"	2"	27.5"	FORK, Pallet, 1.5x5x48, ID 3/OD 2	2"	3"		70011866
	6800	1.75"	4"	48"	2.31"	22.42"	FORK, Pallet, 1.75x4x48, 926	2.31"	3.5"	offset 32	70011847
	6880	1.75"	4"	48"	1.82"	27.36"	FORK, Pallet, 1.75x4x48, ID 2.75, OD 1.82	1.82"	2.75"		70011867
	7000	2"	5"	72"	2.25"	24"	FORK, Pallet, 2x5x72, 2.25" eye, 24" fork drop	2.25"	3.5"	offset 1.25"	70011918
	7500 (rated at 48" load center)	2"	6"	96"	2"	20"	FORK, Pallet, 2 eye, 2x6x96, 20 fork drop				70011734*
	7600	2"	4"	48"	2.05"	26"	FORK, Pallet, 2x4x48, ID 2.05, OD 3	2.05"	3"		70011877
	7600	2"	4"	48"	2.06"	32.36"	FORK, Pallet, 2x4x48, ID 2.06, OD 3	2.06"	3"		70011862
	7600	2"	4"	48"	2.25"	24"	FORK, Pallet, 2.25 eye, 2x4x48, 24" fork drop				70011381*
	8000	2"	4"	42"	1.875"	25"	FORK, Pallet, 1.875 eye, 2x4x42, 25 fork drop				70011726*
	8000	2"	4"	42"	2.25"	24"	FORK, Pallet, 2.25 eye, 2x4x42, 24 fork drop				70011893
	8000	2"	4"	42"	2.75"	25"	FORK, Pallet, 2.75 eye, 2x4x42, 25 fork drop (LH) - Fork Positioning Carriage Only				70011727*
	8000	2"	4"	42"	2.75"	25"	FORK, Pallet, 2.75 eye, 2x4x42, 25 fork drop (RH) - Fork Positioning Carriage Only				70011728*
	8000	2"	4"	48"	1.875"	27"	FORK, Pallet, 1.875 eye, 2x4x48, 27 fork drop				70011427
	8000	2"	4"	48"	2"	24"	FORK, Pallet, 2 eye, 2x4x48, 24 fork drop				70011394
	8000	2"	4"	48"	2"	20"	FORK, Pallet, 2 eye, 2x4x48, 20 fork drop				70011402*
	8000	2"	4"	48"	2"	20.75"	FORK, Pallet, 2x4x48, ID 2, OD 3.5	2"	3.5"		70011874
	8000	2"	4"	48"	2"	27.5"	FORK, Pallet, 2x4x48, ID 2, OD 3.5	2"	3"		70011876
	8000	2"	4"	48"	2.0625"	21"	FORK, Pallet, 2x4x48, 8K, 21 fork drop	2.0625"	3.5"	Inline	70011712
8000	2"	4"	48"	2.75"	25"	FORK, Pallet, 2.75 eye, 2x4x48, 25 fork drop (LH) - Fork Positioning Carriage Only				70011729*	
8000	2"	4"	48"	2.75"	25"	FORK, Pallet, 2.75 eye, 2x4x48, 25 fork drop (RH) - Fork Positioning Carriage Only				70011730*	

NOTES: 96" forks are rated at 48" load center; Use only forks and fork combinations approved by the manufacturer of the unit. *Also available as palletized forks (see pages 10-12).

SHAFT FORKS

Shaft Forks - Pallet (cont.)

Fork Taper	Capacity at 24" Load Center (lbs./pair)	Thickness	Width	Length	Eye Diameter	Fork Drop	Description	Tube			JLG Part Number
								ID	OD	Location	
Pallet	8000	2"	4"	60"	1.875"	25"	FORK, Pallet, 1.875 eye, 2x4x60, 25 fork drop				70011398
	8000	2"	4"	60"	2"	20.75"	FORK, Pallet, 2x4x60, ID 2, OD 3.5	2"	3.5"		70011878
	8000	2"	4"	72"	2"	20.75"	FORK, Pallet, 2x4x72, ID 2, OD 3.5	2"	3.5"		70011861
	8210	2"	4"	48"	2.25"	22.44"	FORK, Pallet, 2.5" eye, 2x4x48, 22.44 fork drop	2.25"	3.5"	offset 1.25"	70011931
	8210	2"	5"	42"	2"	25"	FORK, Pallet, 2 eye, 2x5x42, 25 fork drop				70011424
	8200	2"	4"	48"	2.0625"	21.5"	FORK, Shaft, 2 eye, 2x4x48, 21.5 drop	2.0625"	3"	Inset .125"	70011828
	8200	2"	4"	48"	2.25"	22.42"	FORK, Pallet, 2x4x48, 940	2.31"	3.5"	offset 32	70011848
	8500	2"	4"	48"	2.27"	22.40"	FORK, Pallet, 2x4x48, ID 2.27, OD 3.5	2.27"	3.5"		70011872
	8818	2"	4"	48"	2.3758"	21.5"	FORK, Pallet, 2.3758 eye, 2.25x4x48, 21.5 fork drop				70011429**
	8818 (rated at 20" load center)	1.75"	5"	48"	2.375"	28"	FORK, Pallet, 2.375 eye, 1.75x5x48, 28 fork drop				70011382*
	8818 (rated at 20" load center)	2"	4"	48"	2.375"	21.5"	FORK, Pallet, 2.375 eye, 2x4x48, 21.5 fork drop				70011388
	8818 (rated at 20" load center)	2"	4"	48"	2.375"	28"	FORK, Pallet, 2x4x48, 2.375 eye, 28 fork drop				70011383
	8818 (rated at 20" load center)	2"	5"	48"	2.375"	21.5"	FORK, Pallet, 2.375 eye, 2x5x48, 21.5 fork drop				70011428
	9000	2"	4"	48"	2.06"	23.82"	FORK, Pallet, 2x4x48, ID 2.06, OD 3.5	2.06"	3.5"		70011873**
	9400	2.375"	4"	48"	2.25"	21"	FORK, Pallet, 2.375x4x48, ID 2.25, OD 4	2.25"	4"		70011859
	9400	2.375"	4"	72"	2.25"	21"	FORK, Pallet, 2.375x4x72, ID 2.25, OD 4	2.25"	4"		70011860
	9400	2"	4"	48"	2.5"	22.5"	FORK, Pallet, 2x4x48, ID 2.5, OD 3.5	2.5"	3.5"		70011875**
	9600	1.5"	7"	48"	2.25"	24"	FORK, Pallet, 1.5x7x48, 24 fork drop				70012206
	9920	2"	6"	84"	2.25"	24"	FORK, Pallet, 2.25 eye, 2x6x84, 24 fork drop				70011693
	10,000	1.75"	4"	48"	2.25"	22.42"	FORK, Pallet, 1.75x4x48, M520	2.31"	3.5"	offset 32	70011849
	10,000	1.75"	6"	48"	2.25"	20"	FORK, Pallet, 1.75x6x48, 20 drop				70011962
	10,000	2"	4 3/4"	48"	2.25"	24"	FORK, Pallet, 2.25 eye, 2x4 3/4 x 48, 24 fork drop	2.25"	3.5"	offset 1.25"	70011917
	10,000	2"	4"	48"	2"	27"	FORK, Pallet, 2 eye, 2.25x4x48, 27 fork drop				70011400
	10,000	2"	5"	42"	2.25"	24"	FORK, Pallet, 2.25 eye, 2x5x42, 24 fork drop				70012274
	10,000	2"	5"	42"	2.75"	25"	FORK, Pallet, 2.75 eye, 2x5x42, 25 fork drop (RH) - Fork Positioning Carriage Only				70011588*
	10,000	2"	5"	42"	2.75"	25"	FORK, Pallet, 2.75 eye, 2x5x42, 25 fork drop (LH) - Fork Positioning Carriage Only				70011600*
	10,000	2"	5"	48"	2"	27"	FORK, Pallet, 2 eye, 2x5x48, 27 fork drop				70011423
	10,000	2"	5"	60"	2"	27"	FORK, Pallet, 2 eye, 2x5x60, 27 fork drop				70011425*
	10,000	2"	5"	60"	2.25"	22"	FORK, Pallet, 2.25 eye, 2x5x60, 22 fork drop - Swing Carriage Only				70011731*
	10,000	2"	5"	72"	2.5"	22.5"	FORK, Pallet, 2.5" eye, 2x5x72, 22.5 fork drop	2.25"	3.5"	offset 1.25"	70011929
	10,000	2"	5"	84"	2.25"	24"	FORK, Pallet, 2.25 eye, 2x5x84, 24 fork drop				70011695
	10,000	2"	5"	96"	2.25"	24"	FORK, Pallet, 2.25 eye, 2x5x96, 24 fork drop				70011716
	10,000	2"	5"	96"	2.25"	21"	FORK, Pallet, 2.31 eye, 2x5x96, 21 fork drop	2.31"	4"	offset .125"	70011714
	10,000	2"	6"	48"	2"	20"	FORK, Pallet, 2 eye, 2x6x48, 20 fork drop				70011406
	10,000	2"	6"	60"	2"	20"	FORK, Pallet, 2 eye, 2x6x60, 20 fork drop				70011409*
	10,000	2"	6"	60"	2.25"	22.5"	FORK, Pallet, 2.25 eye, 2x6x60, 22.5 fork drop, 25 center				70011932
	10,000	2"	6"	72"	2"	20"	FORK, Pallet, 2 eye, 2x6x72, 20 fork drop				70011407*
	10,000	2.25"	4"	42"	2"	25"	FORK, Pallet, 2 eye, 2.25x4x42, 25 fork drop				70011735*
	10,000	2.25"	4"	48"	2"	24"	FORK, Pallet, 2 eye, 2.25x4x48, 24 fork drop			offset .25"	70011397*
	10,000	2.25"	4"	48"	2"	24"	FORK, Pallet, 2.25x4x48, 2" eye, 24 drop				70012267
10,000	2.25"	4"	48"	2.56"	26"	FORK, Pallet, 2.25x4x48, ID 2.56, OD 4	2.56"	4"		70011870	
10,000	2.25"	4"	60"	2"	24"	FORK, Pallet, 2.25x4x60, 24" fork drop, 2" eye diameter				70011974	
10,000	2.25"	4"	60"	2"	25"	FORK, Pallet, 2 eye, 2.25x4x60, 25 fork drop				70011401	

NOTES: 96" forks are rated at 48" load center; Use only forks and fork combinations approved by the manufacturer of the unit.
*Also available as palletized forks (see pages 10-12).

Shaft Forks - Pallet (cont.)

Fork Taper	Capacity at 24" Load Center (lbs./pair)	Thickness	Width	Length	Eye Diameter	Fork Drop	Description	Tube			JLG Part Number
								ID	OD	Location	
Pallet	10,000	2.25"	5"	60"	2"	28"	FORK, pallet, 2.25x5x60, OD 3.25, OD 2	2"	3.25"		70011865
	10,000	2.25"	5"	48"	2.25"	21"	FORK, Pallet, 2.31 eye, 2.25x5x48, 21 fork drop	2.31"	4"	offset .125"	70011713
	10,000	2.375"	4"	60"	2.25"	21"	FORK, Pallet, 2.375x4x60, ID 2.25, OD 4	2.25"	4"		70011871
	10,120	2"	5"	48"	2.25"	22"	FORK, Pallet Swing Carriage only, 2.25 eye, 2x5x48, 22 fork drop				70011392
	10,120	2"	5"	72"	2"	24"	FORK, Pallet, 2 eye, 2x5x72, 24 fork drop				70011389*
	10,200	1.75"	6"	48"	2"	20"	FORK, Pallet, 2 eye, 1.75x6x48, 20 fork drop				70011410
	10,200	2"	5"	48"	2.25"	22.42"	FORK, Pallet, 2x5x48, 550	2.31"	3.5"	offset 32	70011846
	10,200	2"	5"	48"	2.25"	24"	FORK, Pallet, 2.25 eye, 2x5x48, 24 fork drop				70011696
	10,500	2.25"	4"	48"	2.05"	26"	FORK, Pallet, 2.25x4x48, ID 3, OD 2.05	2.05"	3"		70011869
	10,500	2"	5"	48"	2.06"	23.82"	FORK, Pallet, 2x5x48, ID 2.06, OD 3.5	2.06"	3.5"		70011879
	10,500	2"	5"	60"	2.06"	23.82"	FORK, Pallet, 2x5x60, ID 2.06 OD 3.5	2.06"	3.5"		70011880
	10,800	1.75"	7"	48"	2"	24"	FORK, Shaft, 1.75x7x48 5400lb cap				70011825
	10,950	2.25"	4"	48"	2"	20.5"	FORK, Pallet, 2 eye, 2.25x4x48, 20.5 fork drop				70011405*
	10,950	2.25"	4"	48"	2.06"	24.21"	FORK, Pallet, 2.25x4x48, ID 3.5, OD 2.06	2.06"	3.5"		70011868
	10,950	2.25"	4"	48"	2.25"	20"	FORK, Pallet, 2.25 eye, 2.25x4x48, 20 fork drop				70011417*
	10,950	2.25"	4"	48"	2.25"	24"	FORK, Pallet, 2.25 eye, 2.25x4x48, 24 fork drop				70011390*
	11,300	2"	6"	60"	2"	25.5"	FORK, Pallet Swing Mast Only, 2 eye, 2x6x60, 25.5 fork drop				70011404*
	11,300	2"	6"	60"	2.25"	25.5"	FORK, Pallet, 2.25 eye, 2x6x60, 25.5 fork drop				70011416*
	11,300	2.25"	6"	72"	2.25"	24"	FORK, Pallet, 2.25 eye, 2.25x6x72, 24 fork drop				70011421*
	11,400	2.75"	6"	96"	2.5"	29"	FORK, Pallet, 2.75x6x96, 29 drop	2.56"	6"	offset 4.43"	70011950
	12,000	1.75"	7"	60"	2"	24"	FORK, Pallet, 2 eye, 1.75x7x60, 24 fork drop				70011395
	12,000	2"	6"	48"	2.5"	22.5"	FORK, Pallet, 2.5 eye, 2x6x48, 22.5 fork drop		4"	offset 1"	70012203
	12,000	2"	6"	72"	2.25"	21"	FORK, Pallet, 2.31 eye, 2x6x72, 21 fork drop	2.31"	4"	offset 1/8"	70011715
	12,000	2"	6"	72"	2.31"	21"	FORK, Pallet, 2.31 eye, 2x6x72, 21 fork drop				70011715
	12,000	2.25"	4"	48"	2.25"	22.42"	FORK, Pallet, 2.25x4x48, 532	2.31"	3.5"	offset 32	70012268
	12,000	2.25"	4"	60"	2"	22.42"	FORK, Pallet 2.25x4x60, 2 eye			offset 32	70012269
	12,000	2.25"	4"	84"	2.25"	24"	FORK, Pallet, 2.25 eye, 2.25x4x84, 24 fork drop				70011694
	12,000	2.25"	5"	60"	2.25"	24"	FORK, Pallet, 2.25 eye, 2.25x5x60, 24 fork drop				70011705
	12,000	2.375"	4"	60"	2"	25.5"	FORK, Pallet, 2 eye, 2.375x 4x60, 25.5 fork drop		3.5"	offset .5"	70012205
	12,200	1.75"	7"	60"	2"	24"	FORK, Pallet, 2 eye, 1.75x7x60, 24 fork drop FT				70011788
	12,600	1.75"	5"	60"	2"	22.42"	FORK, Shaft, 1.75x5x60 6300 lb cap			offset 32	70011827
	12,600	2"	6"	48"	2.25"	24"	FORK, Pallet, 2.25 eye, 2x6x48, 24 fork drop, Full Taper				70011895
	12,600	2"	6"	48"	2.25"	24"	FORK, Pallet, 2.25 eye, 2x6x48, 24 fork drop, Full Taper				70012230
	12,600	2"	6"	60"	2.25"	20.5"	FORK, Pallet, 2.25 eye, 2x6x60, 20.5 fork drop				70011699*
	12,600	2"	6"	60"	2.25"	24"	FORK, Pallet, 2.25 eye, 2x6x60, 24 fork drop, Full Taper				70012231
	12,600	2"	6"	60"	2.25"	24"	FORK, Pallet, 2.25 eye, 2x6x60, 24 fork drop, Full Taper				70011896
	13,700	2.25"	5"	48"	2.25"	24"	FORK, Pallet, 2.25 eye, 2.25x5x48, 24 fork drop				70011386*
	13,700	2.25"	5"	48"	2.25"	20"	FORK, Pallet, 2.25 eye, 2.25x5x48, 20 fork drop				70011418*
	15,000	2.25"	6"	60"	2.75"	22"	FORK, Pallet, 2.75 eye, 2.25x6x60, 22 fork drop	2.8"	4"		70011937
	15,000	2.25"	6"	96"	2.75"	22"	FORK, Pallet, 2.75 eye, 2.25x6x96, 22 fork drop	2.8"	4"		70012273
	15,200	2.25"	5"	72"	2.25"	24"	FORK, Pallet, 2.25 eye, 2.25x5x72, 24 fork drop				70011697*
	16,300	2.25"	6"	60"	2.25"	24"	FORK, Pallet, 2.25 eye, 2.25x6x60, 24 fork drop				70011387
16,300	2.25"	6"	60"	2.25"	20"	FORK, Pallet, 2.25 eye, 2.25x6x60, 20 fork drop				70011419	
16,500	2.25"	6"	96"	2.25"	24"	FORK, Pallet, 2.25 eye, 2.25x6x96, 24 fork drop				70011704	
17,800	2.5"	5"	72"	2"	26.5 BH 28.5 CL	ForK, Shaft, 2 eye, 2.5x5x72	2"	3.25"	Inset .250	70012242	
17,800	2.25"	5"	72"	2"	26.5 BH 28.5 CL	ForK, Shaft, 2 eye, 2.25 x 5 x 72	2"	3.25"	Inset .250	70012239	
18,200	2.36"	6"	60"	2.75"	22.25"	FORK, Pallet, 2.36x6x60	2.81"	4"		70011970	

NOTES: 96" forks are rated at 48" load center; Use only forks and fork combinations approved by the manufacturer of the unit.
*Also available as palletized forks (see pages 10-12).

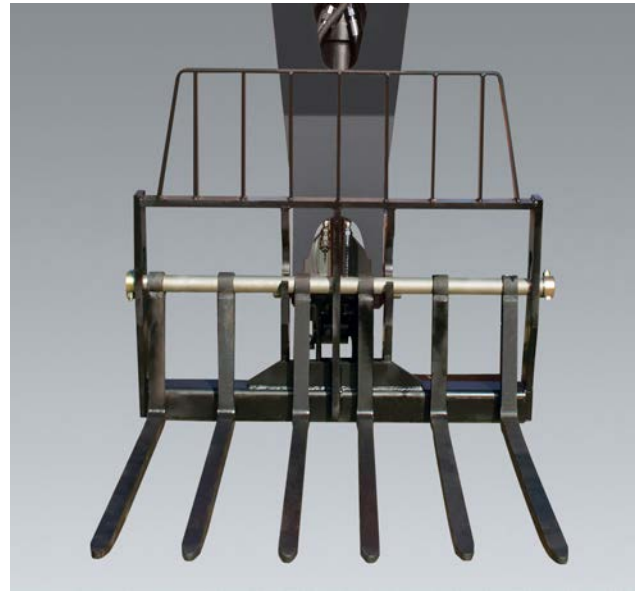
Shaft Forks - Cubing

The cubing fork has a smaller width and is used to load, unload and move cubes of brick and block.

Features

- Forged heel, single taper, double taper, with or without peek-a-boo backs are available.
- Listed forks include standard heel radius (unless otherwise noted).
- Qualify for free freight on economy orders over \$1000 when shipping to locations within the continental United States
- Any fork can be combined with other economy orders to qualify for \$1000 free freight when shipping to locations within the continental United States

To request a size not listed, please see the Shaft Fork Request Form on page 49.



Fork Taper	Capacity at 24" load center (lbs./pair)	Thickness	Width	Length	Eye Diameter	Fork Drop	Description	Tube			JLG Part Number
								ID	OD	Location	
Cubing	3000	2"	2"	48"	2"	20"	FORK, Cubing, 2 eye, 2x2x48, 20 fork drop				70011408*
	3880	2"	2"	48"	2.25"	24"	FORK, Cubing, 2.25 eye, 2x2x48, 24 fork drop				70011385*
	3880	2"	2"	48"	2.25"	20"	FORK, Cubing, 2.25 eye, 2x2x48, 20 fork drop				70011413*
	3880	2"	2"	48"	2.375"	21.5"	FORK, Cubing, 2.375 eye, 2x2x48, 21.5 fork drop				70011725*
	4000	2"	2"	48"	2"	20.75"	FORK, Cubing, 2x2x48, ID 2, OD 3.5	2"	3.5"		70011864*
	4000	2"	2"	48"	2"	22"	FORK, Cubing, 2 eye, 2x2x48, 22 fork drop				70011396*
	4000	2"	2"	48"	2"	24"	FORK, Cubing, 2x2x48, 24 drop, 2" eye				70012248
	4000	2"	2"	48"	2"	25"	FORK, Cubing, 2 eye, 2x2x48, 25 fork drop				70011399*
	4000	2"	2"	48"	2"	27"	FORK, Cubing, 2 eye, 2x2x48, 27 fork drop				70011422
	4000	2"	2"	48"	2.25"	21"	FORK, Cubing, 2x2x48, ID 2.25, OD 4	2.25"	4"		70011863
	4000	2"	2"	48"	2.25"	22.44"	FORK, Cubing, 2x2x48, offset	2.28"	3.5"	Offset	70011930*
	4200	2"	2"	48"	2"	24"	FORK, Cubing, 2 eye, 2x2x48, 24 fork drop	2"	3.25"		70012198

NOTES: 96" forks are rated at 48" load center; Use only forks and fork combinations approved by the manufacturer of the unit.
*Also available as palletized forks (see pages 10-12).



Shaft Forks - Lumber

The lumber fork has a wider width and is ideal for separating stacks of lumber.

Features

- Forged heel, single taper, double taper, with or without peek-a-boo backs are available.
- Listed forks include standard heel radius (unless otherwise noted).
- Qualify for free freight on economy orders over \$1000 when shipping to locations within the continental United States
- Any fork can be combined with other economy orders to qualify for \$1000 free freight when shipping to locations within the continental United States

To request a size not listed, please see the Shaft Fork Request Form on page 49.

Fork Taper	Capacity at 24" load center (lbs./pair)	Thickness	Width	Length	Eye Diameter	Fork Drop	Description	Tube		JLG Part Number
								ID	OD	
Lumber	6000	1.75"	5"	60"	2"	24"	FORK, Lumber, 2 eye, 1.75x5x60, 24 fork drop			70011718*
	6100	1.75"	4"	48"	2.25"	25.5"	FORK, Lumber, 2.25 eye, 1.75x4x48, 25.5 fork drop			70011414*
	7300	1.5"	6"	60"	2.25"	24"	FORK, Lumber, 2.25 eye, 1.5x6x60, 24 fork drop			70011380
	8000	1.75"	6"	48"	1.875"	25"	FORK, Lumber, 1.875 eye, 1.75x6x48, 25 fork drop			70011719*
	8000	1.75"	6"	48"	2.25"	22"	FORK, Lumber, 2.25 eye, 1.75x6x48, 22 fork drop - Swing Carriage Only			70011720*
	8000	1.75"	6"	60"	1.875"	25"	FORK, Lumber, 1.875 eye, 1.75x6x60, 25 fork drop			70011721*
	10,000	1.75"	7"	48"	2"	24"	FORK, Lumber, 2 eye, 1.75x7x48, 24 fork drop			70011722
	10,000	1.75"	7"	48"	2"	25"	FORK, Lumber, 2 eye, 1.75x7x48, 25 fork drop			70011723*
	10,000	1.75"	7"	60"	2"	27"	FORK, Lumber, 2 eye, 1.75x7x60, 27 fork drop			70011426*
	10,000	1.75"	7"	60"	2.25"	22"	FORK, Lumber, 2.25 eye, 1.75x7x60, 22 fork drop - Swing Carriage Only			70011724*
	10,000	2"	6"	48"	2"	29.5"	FORK, Lumber, 2 eye, 2x6x48, 29.5 fork drop			70011732*
	10,000	2"	6"	60"	2"	29.5"	FORK, Pallet, 2 eye, 2x6x60, 29.5 fork drop			70011733*
	10,000	2"	6"	72"	2"	20"	FORK, Lumber, 2 eye, 2x6x72, 20 fork drop			70011411*
	10,800	1.75"	7"	60"	2.25"	24"	FORK, Lumber, 2.25 eye, 1.75x7x60, 24 fork drop			70011391
	11,300	2"	6"	60"	2"	20"	FORK, Lumber, 2 eye, 2x6x60, 20 fork drop			70011412*
	11,300	2"	6"	60"	2"	24"	FORK, Lumber, 2 eye, 2x6x60, 24 fork drop			70011384*
	12,000	1.75"	7"	60"	2.25"	24"	FORK, Lumber, 2.25 eye, 1.75x7x60, 24 fork drop FT			70012204
16,300	2.25"	6"	72"	2.25"	20"	FORK, Lumber, 2.25 eye, 2.25x6x72, 20 fork drop			70011420*	

NOTES: 96" forks are rated at 48" load center; Use only forks and fork combinations approved by the manufacturer of the unit. Also available as palletized forks (see pages 10-12).

Palletized Shaft Forks

You can never have too much of a good thing! Buy in bulk and save even more money!

Features

- Free freight on orders of pallets of forks (20 forks/pallet) when shipping to locations within the continental United States.
- Less downtime with forks already stocked in your location to maximize uptime for you and your customers!

To request a size not listed, please see the Shaft Fork Request Form on page 49.



Fork Taper	Capacity at 24" Load Center (lbs./pair)	Thickness	Width	Length	Eye Diameter	Fork Drop	Forks per pallet	Description	JLG Pallet Part Number	Single Fork Part Number
Cubing	3000	2"	2"	48"	2"	20"	20	PALLET OF FORKS, Cubing, 2 eye, 2x2x48, 20 fork drop	70011644	70011408
	3880	2"	2"	48"	2.25"	20"	20	PALLET OF FORKS, Cubing, 2.25 eye, 2x2x48, 20 fork drop	70011648	70011413
	3880	2"	2"	48"	2.25"	24"	20	PALLET OF FORKS, Cubing, 2.25 eye, 2x2x48, 24 fork drop	70011631	70011385
	3880	2"	2"	48"	2.375"	21.5"	20	PALLET OF FORKS, Cubing, 2x2x48, 21.5 fork drop	70011769	70011725
	4000	2"	2"	48"	2"	20.75"	20	PALLET OF FORKS, Cubing, 2x2x48, ID 2, OD 3.5	70011963	70011864
	4000	2"	2"	48"	2"	22"	20	PALLET OF FORKS, Cubing, 2 eye, 2x2x48, 22 fork drop	70011637	70011396
	4000	2"	2"	48"	2"	25"	20	PALLET OF FORKS, Cubing, 2 eye, 2x2x48, 25 fork drop	70011639	70011399
	4000	2"	2"	48"	2.25"	22.44"	20	PALLET OF FORKS, Cubins, 2.25 eye, 2x2x48, 22.44 fork drop	70012012	70011930
Lumber	6000	1.75"	5"	60"	2"	24"	20	PALLET OF FORKS Lumber, 2 eye, 1.75x5x60, 24 fork drop	70011762	70011718
	6100	1.75"	4"	48"	2.25"	25.5"	20	PALLET OF FORKS, Lumber, 2.25 eye, 1.75x4x48, 25.5 fork drop	70011649	70011414
	8000	1.75"	6"	48"	1.875"	25"	20	PALLET OF FORKS, Lumber, 1.875 eye, 1.75x6x48, 25 fork drop	70011763	70011719
	8000	1.75"	6"	48"	2.25"	22"	20	PALLET OF FORKS, Lumber, 2.25 eye, 1.75x6x48, 22 fork drop	70011764	70011720
	8000	1.75"	6"	60"	1.875"	25"	20	PALLET OF FORKS, Lumber, 1.875 eye, 1.75x6x60, 25 fork drop	70011765	70011721
	10,000	1.75"	7"	48"	2"	25"	20	PALLET OF FORKS, Lumber, 2 eye, 1.75x7x48, 25 fork drop	70011767	70011723
	10,000	1.75"	7"	60"	2"	27"	20	PALLET OF FORKS, Lumber, 2 eye, 1.75x7x60, 27 fork drop	70011656	70011426
	10,000	1.75"	7"	60"	2.25"	22"	20	PALLET OF FORKS, Lumber, 2.25 eye, 1.75x7x60, 22 fork drop	70011768	70011724

NOTES: 96" forks are rated at 48" load center; Use only forks and fork combinations approved by the manufacturer of the unit. Palletized forks ship from OH and Ontario with a lead time of 8 working days.

Palletized Shaft Forks (cont.)

Fork Taper	Capacity at 24" Load Center (lbs./pair)	Thickness	Width	Length	Eye Diameter	Fork Drop	Forks per pallet	Description	JLG Pallet Part Number	Single Fork Part Number
Lumber	10,000	2"	6"	48"	2"	29.5"	20	PALLET OF FORKS, Lumber, 2 eye, 2x6x48, 29.5 fork drop	70011776	70011732
	10,000	2"	6"	60"	2"	29.5"	20	PALLET OF FORKS, Lumber, 2 eye, 2x6x60, 29.5 fork drop	70011777	70011733
	10,000	2"	6"	72"	2"	20"	20	PALLET OF FORKS, Lumber, 2 eye, 2x6x72, 20 fork drop	70011646	70011411
	11,300	2"	6"	60"	2"	20"	20	PALLET OF FORKS, Lumber, 2 eye, 2x6x60, 20 fork drop	70011647	70011412
	11,300	2"	6"	60"	2"	24"	20	PALLET OF FORKS, Lumber, 2 eye, 2x6x60, 24 fork drop	70011630	70011384
	16,300	2.25"	6"	60"	2.25"	24"	20	PALLET OF FORKS, Lumber, 2.25 eye, 2.25x6x60, 24 fork drop	70011633	70011387
	16,300	2.25"	6"	72"	2.25"	20"	20	PALLET OF FORKS, Lumber, 2.25 eye, 2.25x6x72, 20 fork drop	70011653	70011420
Pallet	5000	1.75"	4"	48"	2"	25.5"	20	PALLET OF FORKS, 2 eye, 1.75x4x48, 25.5 fork drop	70011761	70011717
	6000	1.75"	4"	48"	2"	22"	20	PALLET OF FORKS, Pallet, 2 eye, 1.75x4x48, 22 fork drop	70011636	70011393
	7500 (rated at 48" load center)	2"	6"	96"	2"	20"	20	PALLET OF FORKS, 2 eye, 2x6x96, 20 fork drop	70011778	70011734
	7600	2"	4"	48"	2.25"	24"	20	PALLET OF FORKS, Pallet, 2.25 eye, 2x4x48, 24 fork drop	70011628	70011381
	8000	1.875"	4"	42"	2"	25"	20	PALLET OF FORKS, 1.875 eye, 2x4x42, 25 fork drop	70011770	70011726
	8000	2"	4"	48"	2"	20"	20	PALLET OF FORKS, Pallet, 2 eye, 2x4x48, 20 fork drop	70011640	70011402
	8000	2"	4"	48"	2"	24"	20	PALLET OF FORKS, Pallet, 2 eye, 2x4x48, 24 fork drop	70011394	70012246
	8000	2.75"	4"	42"	2"	25"	20	PALLET OF FORKS, 2.75 eye, 2x4x42, 25 fork drop (LH)	70011771	70011727
	8000	2.75"	4"	42"	2"	25"	20	PALLET OF FORKS, 2.75 eye, 2x4x42, 25 fork drop (RH)	70011772	70011728
	8000	2.75"	4"	48"	2"	25"	20	PALLET OF FORKS, 2.75 eye, 2x4x48, 25 fork drop (LH)	70011773	70011729
	8000	2.75"	4"	48"	2"	25"	20	PALLET OF FORKS, 2.75 eye, 2x4x48, 25 fork drop (RH)	70011774	70011730
	8818 (rated at 20" load center)	1.75"	5"	48"	2.375"	28"	20	PALLET OF FORKS, Pallet, 2.375 eye, 1.75x5x48, 28 fork drop	70011629	70011382
	10,000	2"	4"	42"	2"	25"	20	PALLET OF FORKS, 2 eye, 2.25x4x42, 25 fork drop	70011779	70011735
	10,000	2"	5"	42"	2.75"	25"	20	PALLET OF FORKS, 2.75 eye, 2x5x42, 25 fork drop (RH)	70011780	70011588
	10,000	2"	5"	42"	2.75"	25"	20	PALLET OF FORKS, 2.75 eye, 2x5x42, 25 fork drop (LH)	70011781	70011600
	10,000	2"	5"	60"	2"	27"	20	PALLET OF FORKS, Pallet, 2 eye, 2x5x60, 27 fork drop	70011655	70011425
10,000	2"	6"	60"	2"	20"	20	PALLET OF FORKS, Pallet, 2 eye, 2x6x60, 20 fork drop	70011645	70011409	

NOTE: Use only forks and fork combinations approved by the manufacturer of the unit. Palletized forks ship from OH and Ontario with a lead time of 8 working days.

SHAFT FORKS

Palletized Shaft Forks (cont.)

Fork Taper	Capacity at 24" Load Center (lbs./pair)	Thickness	Width	Length	Eye Diameter	Fork Drop	Forks per pallet	Description	JLG Pallet Part Number	Single Fork Part Number
Pallet	10,000	2"	6"	72"	2"	20"	20	PALLET OF FORKS, Pallet, 2 eye, 2x6x72, 20 fork drop	70011643	70011407
	10,000	2.25"	4"	48"	2"	24"	20	PALLET OF FORKS, Pallet, 2 eye, 2.25x4x48, 24 fork drop, offset .25"	70011638	70011397
	10,000	2.25"	5"	60"	2"	22"	20	PALLET OF FORKS, 2.25 eye, 2x5x60, 22 fork drop	70011775	70011731
	10,120	2"	5"	72"	2"	24"	20	PALLET OF FORKS, Pallet, 2 eye, 2x5x72, 24 fork drop	70011634	70011389
	10,950	2.25"	4"	48"	2"	20.5"	20	PALLET OF FORKS, Pallet, 2 eye, 2.25x4x48, 20.5 fork drop	70011642	70011405
	10,950	2.25"	4"	48"	2.25"	20"	20	PALLET OF FORKS, Pallet, 2.25 eye, 2.25x4x48, 20 fork drop	70011651	70011417
	10,950	2.25"	4"	48"	2.25"	24"	20	PALLET OF FORKS, Pallet, 2.25 eye, 2.25x4x48, 24 fork drop	70011635	70011390
	11,300	2"	6"	60"	2"	25.5"	20	PALLET OF FORKS, Pallet Swing Mast Only, 2 eye, 2x6x60, 25.5 fork drop	70011641	70011404
	11,300	2"	6"	60"	2.25"	25.5"	20	PALLET OF FORKS, Pallet, 2.25 eye, 2x6x60, 25.5 fork drop	70011650	70011416
	11,300	2.25"	6"	72"	2.25"	24"	20	PALLET OF FORKS, Pallet, 2.25 eye, 2.25x6x72, 24 fork drop	70011654	70011421
	12,000	2"	6"	48"	2.5"	22.5"	20	FORK, Pallet, 2.5 eye, 2x6x48, 22.5 fork drop, 4" tube OD, offset 1"	70012203	70012245
	12,000	2"	2"	48"	2"	24"	20	Pallet of Forks Cubing, 2x2x48, 24" drop	70012198	70012247
	13,700	2.25"	5"	48"	2.25"	20"	20	PALLET OF FORKS, Pallet, 2.25 eye, 2.25x5x48, 20 fork drop	70011652	70011418
	13,700	2.25"	5"	48"	2.25"	24"	20	PALLET OF FORKS, Pallet, 2.25 eye, 2.25x5x48, 24 fork drop	70011632	70011386
	15,200	2.25"	5"	72"	2.25"	24"	20	PALLET OF FORKS, Pallet, 2.25 eye, 2.25x5x72, 24 fork drop	70011698	70011697
	18,200	2"	6"	60"	2.25"	20.5"	20	PALLET OF FORKS, Shaft, 2.25 eye, 2x6x60, 20.5 fork drop	70011700	70011699

NOTE: Use only forks and fork combinations approved by the manufacturer of the unit. Palletized forks ship from OH and Ontario with a lead time of 8 working days.



ITA Hook Forks

As part of the JLG All Makes parts offering, we have established a supply of competitively priced forks for your industrial lift truck needs. This program will add to your ability to one-stop-shop with JLG and help save you more money.

Features

- Qualify for free freight on economy orders over \$1000 when shipping to locations within the continental United States
- Any fork can be combined with other economy orders to qualify for \$1000 free freight when shipping to locations within the continental United States
- Lock pin assembly included with all ITA Hook Forks
- The design of the lock pin assembly hole in the hook is permanently sealed against dirt, grease and other contaminants reducing the possibility of the pin becoming inoperable
- All standard taper forks are supplied with no bevel on tips
- All full bottom tapered and polished forks are supplied with beveled tips.
- Class II, Class III, and Class IV ITA Hook Forks that will fit all standard ITA carriages are available
- Quality forks shipping from different locations in the US to expedite freight time

To request a size not listed, please see the New ITA Fork Request Form on page 48.

Class II

Capacity at 24" Load Center (lbs./pair)	Fork Taper	Thickness	Width	Length	Distance Between Hooks	Carriage Height	Back Height (from top of fork to bottom of fork)	Description	JLG Part Number
3700	Full	1.25"	4"	30"	15"	16"	21"	FORK, ITA, CL 2, 1.25x4x30, FT	70011446
3700	Full	1.25"	4"	36"	15"	16"	21"	FORK, ITA, CL 2, 1.25x4x36, FT	70011447
3700	Full	1.25"	4"	42"	15"	16"	21"	FORK, ITA, CL 2, 1.25x4x42, FT	70011448
3700	Full	1.25"	4"	48"	15"	16"	21"	FORK, ITA, CL 2, 1.25x4x48, FT	70011449
3700	Full	1.25"	4"	54"	15"	16"	21"	FORK, ITA, CL 2, 1.25x4x54, FT	70011450
3700	Full	1.25"	4"	60"	15"	16"	21"	FORK, ITA, CL 2, 1.25x4x60, FT	70011451
3700	Standard	1.25"	4"	30"	15"	16"	21"	FORK, ITA CL 2, 1.25x4x30 ST	70011261
3700	Standard	1.25"	4"	36"	15"	16"	21"	FORK, ITA CL 2, 1.25x4x36 ST	70011262
3700	Standard	1.25"	4"	42"	15"	16"	21"	FORK, ITA, CL 2, 1.25x4x42 ST	70010571
3700	Standard	1.25"	4"	48"	15"	16"	21"	FORK, ITA, CL 2, 1.25x4x48 ST	70010572
3700	Standard	1.25"	4"	54"	15"	16"	21"	FORK, ITA CL 2, 1.25x4x54 ST	70011263
3700	Standard	1.25"	4"	60"	15"	16"	21"	FORK, ITA CL 2, 1.25x4x60 ST	70011264
4000	Standard	1.5"	3"	36"	15"	16"	21"	FORK, ITA CL 2, 1.5x3x36 ST	70011256
4000	Standard	1.5"	3"	42"	15"	16"	21"	FORK, ITA CL 2, 1.5x3x42 ST	70011257
4000	Standard	1.5"	3"	48"	15"	16"	21"	FORK, ITA CL 2, 1.5x3x48 ST	70011258
4000	Standard	1.5"	3"	54"	15"	16"	21"	FORK, ITA CL 2, 1.5x3x54 ST	70011259
4000	Standard	1.5"	3"	60"	15"	16"	21"	FORK, ITA CL 2, 1.5x3x60 ST	70011260
5200	Full	1.5"	4"	36"	15"	16"	21"	FORK, ITA, CL 2, 1.5x4x36, FT	70011454
5500	Full	1.5"	4"	30"	15"	16"	21"	FORK, ITA, CL 2, 1.5x4x30, FT	70011452
5500	Full	1.5"	4"	32"	15"	16"	21"	FORK, ITA, CL 2, 1.5x4x32, FT	70011453

NOTES: 96" forks are rated at 48" load center; Use only forks and fork combinations approved by the manufacturer of the unit.

*Also available as palletized forks (see page 20).

ITA Hook Forks (Class II cont.)

Class II

Capacity at 24" Load Center (lbs./pair)	Fork Taper	Thickness	Width	Length	Distance Between Hooks	Carriage Height	Back Height (from top of fork to bottom of fork)	Description	JLG Part Number
5500	Full	1.5"	4"	42"	15"	16"	21"	FORK, ITA, CL2 1.5x4x42, FT	70010590
5500	Full	1.5"	4"	48"	15"	16"	21"	FORK, ITA, CL2 1.5x4x48, FT	70010591
5500	Full	1.5"	4"	54"	15"	16"	21"	FORK, ITA, CL2, 1.5x4x54, FT	70011455
5500	Full	1.5"	4"	60"	15"	16"	21"	FORK, ITA, CL2, 1.5x4x60, FT	70011456
5500	Full	1.5"	5"	30"	15"	16"	21"	FORK, ITA, CL2,1.5x5x30, FT	70011464
5500	Full	1.5"	5"	36"	15"	16"	21"	FORK, ITA, CL2, 1.5x5x36, FT	70011465
5500	Full	1.5"	5"	42"	15"	16"	21"	FORK, ITA, CL2 1.5x5x42, FT	70010592
5500	Full	1.5"	5"	48"	15"	16"	21"	FORK, ITA, CL2 1.5x5x48, FT	70010593
5500	Full	1.5"	5"	54"	15"	16"	21"	FORK, ITA, CL2,1.5x5x54, FT	70011466
5500	Full	1.5"	5"	60"	15"	16"	21"	FORK, ITA, CL2,1.5x5x60, FT	70011472*
5500	Full	1.5"	6"	30"	15"	16"	21"	FORK, ITA, CL 2, 1.5x6x30, FT	70011473
5500	Full	1.5"	6"	36"	15"	16"	21"	FORK, ITA, CL 2, 1.5x6x36, FT	70011474
5500	Full	1.5"	6"	42"	15"	16"	21"	FORK, ITA, CL 2, 1.5x6x42, FT	70011475
5500	Full	1.5"	6"	48"	15"	16"	21"	FORK, ITA, CL 2, 1.5x6x48, FT	70011476
5500	Full	1.5"	6"	54"	15"	16"	21"	FORK, ITA, CL 2, 1.5x6x54, FT	70011477
5500	Full	1.5"	6"	60"	15"	16"	21"	FORK, ITA, CL 2, 1.5x6x60, FT	70011478
5500	Full	1.75"	4"	30"	15"	16"	21"	FORK, ITA, CL2, 1.75x4x30, FT	70011457
5500	Full	1.75"	4"	36"	15"	16"	21"	FORK, ITA, CL2, 1.75x4x36, FT	70011458
5500	Full	1.75"	4"	42"	15"	16"	21"	FORK, ITA, CL2, 1.75x4x42, FT	70011459
5500	Full	1.75"	4"	54"	15"	16"	21"	FORK, ITA, CL2, 1.75x4x54, FT	70011461*
5500	Full	1.75"	4"	60"	15"	16"	21"	FORK, ITA, CL2,1.75x4x60, FT	70011462
5500	Full	1.75"	4"	72"	15"	16"	21"	FORK, ITA, CL2, 1.75x4x72, FT	70011463
5500	Full	1.75"	5"	30"	15"	16"	21"	FORK, ITA, CL2,1.75x5x30, FT	70011468
5500	Full	1.75"	5"	36"	15"	16"	21"	FORK, ITA, CL2,1.75x5x36, FT	70011469
5500	Full	1.75"	5"	54"	15"	16"	21"	FORK, ITA, CL2,1.75x5x54, FT	70011471
5500	Full	1.75"	5"	42"	15"	16"	21"	FORK, ITA, CL2 1.75x5x42, FT	70010594
5500	Full	1.75"	5"	48"	15"	16"	21"	FORK, ITA, CL2 1.75x5x48 FT	70010744
5500	Full	1.75"	5"	72"	15"	16"	21"	FORK, ITA, CL2 1.75x5x72, FT	70010595
5500	Standard	1.5"	4"	30"	15"	16"	21"	FORK, ITA CL 2, 1.5x4x30 ST	70011265
5500	Standard	1.5"	4"	32"	15"	16"	21"	FORK, ITA CL 2, 1.5x4x32 ST	70011266
5500	Standard	1.5"	4"	36"	15"	16"	21"	FORK, ITA, CL2 1.5x4x36 ST	70010573
5500	Standard	1.5"	4"	42"	15"	16"	21"	FORK, ITA, CL2 1.5x4x42 ST	70010574*
5500	Standard	1.5"	4"	48"	15"	16"	21"	FORK, ITA, CL2 1.5x4x48 ST	70010575*
5500	Standard	1.5"	4"	54"	15"	16"	21"	FORK, ITA, CL2 1.5x4x54 ST	70010576
5500	Standard	1.5"	4"	60"	15"	16"	21"	FORK, ITA, CL2 1.5x4x60 ST	70010577
5500	Standard	1.5"	4"	72"	15"	16"	21"	FORK, ITA CL 2, 1.5x4x72 ST	70011267
5500	Standard	1.5"	5"	30"	15"	16"	21"	FORK, ITA CL 2, 1.5x5x30 ST	70011271
5500	Standard	1.5"	5"	36"	15"	16"	21"	FORK, ITA, CL2 1.5x5x36 ST	70010578
5500	Standard	1.5"	5"	42"	15"	16"	21"	FORK, ITA, CL2 1.5x5x42 ST	70010579
5500	Standard	1.5"	5"	48"	15"	16"	21"	FORK, ITA, CL2 1.5x5x48 ST	70010580*

NOTES: *96" forks are rated at 48" load center; Use only forks and fork combinations approved by the manufacturer of the unit.

*Also available as palletized forks (see page 20).

ITA Hook Forks (Class II cont. and Class III)

Class II

Capacity at 24" Load Center (lbs./pair)	Fork Taper	Thickness	Width	Length	Distance Between Hooks	Carriage Height	Back Height (from top of fork to bottom of fork)	Description	JLG Part Number
5500	Standard	1.5"	5"	54"	15"	16"	21"	FORK, ITA CL 2, 1.5x5x54 ST	70011272
5500	Standard	1.5"	5"	60"	15"	16"	21"	FORK, ITA CL 2, 1.5x5x60 ST	70011273
5500	Standard	1.5"	5"	72"	15"	16"	21"	FORK, ITA CL 2, 1.5x5x72 ST	70011274*
5500	Standard	1.5"	6"	30"	15"	16"	21"	FORK, ITA CL 2, 1.5x6x30 ST	70011281
5500	Standard	1.5"	6"	36"	15"	16"	21"	FORK, ITA CL 2, 1.5x6x36 ST	70011282
5500	Standard	1.5"	6"	42"	15"	16"	21"	FORK, ITA CL 2, 1.5x6x42 ST	70011283
5500	Standard	1.5"	6"	48"	15"	16"	21"	FORK, ITA CL 2, 1.5x6x48 ST	70011284
5500	Standard	1.5"	6"	54"	15"	16"	21"	FORK, ITA CL 2, 1.5x6x54 ST	70011285
5500	Standard	1.5"	6"	60"	15"	16"	21"	FORK, ITA CL 2, 1.5x6x60 ST	70011286
5500	Standard	1.75"	4"	30"	15"	16"	21"	FORK, ITA CL 2, 1.75x4x30 ST	70011268
5500	Standard	1.75"	4"	36"	15"	16"	21"	FORK, ITA, CL2 1.75x4x36 ST	70010581
5500	Standard	1.75"	4"	42"	15"	16"	21"	FORK, ITA, CL2 1.75x4x42 ST	70010582
5500	Standard	1.75"	4"	48"	15"	16"	21"	FORK, ITA, CL2 1.75x4x48 ST	70010583
5500	Standard	1.75"	4"	48"	15"	16"	21"	FORK, ITA, CL2, 1.75x4x48, FT	70011460
5500	Standard	1.75"	4"	54"	15"	16"	21"	FORK, ITA, CL2 1.75x4x54 ST	70010584
5500	Standard	1.75"	4"	60"	15"	16"	21"	FORK, ITA, CL2 1.75x4x60 ST	70010585
5500	Standard	1.75"	4"	72"	15"	16"	21"	FORK, ITA, CL2 1.75x4x72 ST	70010586*
5500	Standard	1.75"	4"	84"	15"	16"	21"	FORK, ITA CL 2, 1.75x4x84 ST	70011269
5500	Standard	1.75"	4"	96"	15"	16"	21"	FORK, ITA CL 2, 1.75x4x96 ST	70011270
5500	Standard	1.75"	5"	30"	15"	16"	21"	FORK, ITA CL 2, 1.75x5x30 ST	70011275
5500	Standard	1.75"	5"	36"	15"	16"	21"	FORK, ITA CL 2, 1.75x5x36 ST	70011276
5500	Standard	1.75"	5"	42"	15"	16"	21"	FORK, ITA, CL2 1.75x5x42 ST	70010587
5500	Standard	1.75"	5"	48"	15"	16"	21"	FORK, ITA, CL2 1.75x5x48 ST	70010588
5500	Standard	1.75"	5"	54"	15"	16"	21"	FORK, ITA CL 2, 1.75x5x54 ST	70011277
5500	Standard	1.75"	5"	60"	15"	16"	21"	FORK, ITA, CL2 1.75x5x60 ST	70010589
5500	Standard	1.75"	5"	72"	15"	16"	21"	FORK, ITA CL 2, 1.75x5x72 ST	70011278*
5500	Standard	1.75"	5"	84"	15"	16"	21"	FORK, ITA CL 2, 1.75x5x84 ST	70011279
5500	Standard	1.75"	5"	96"	15"	16"	21"	FORK, ITA CL 2, 1.75x5x96 ST	70011280
6400	Full	1.5"	5"	60"	15"	16"	21"	FORK, ITA, CL2, 1.5x5x60, FT	70011467

CLASS III

Capacity at 24" Load Center (lbs./pair)	Fork Taper	Thickness	Width	Length	Distance Between Hooks	Carriage Height	Back Height (from top of fork to bottom of fork)	Description	JLG Part Number
8,000	Full	1.5"	6"	42"	18.78"	20"	25.25"	FORK, ITA, CL3, 1.5X6X42, FT	70011493*
8,000	Full	1.5"	6"	54"	18.78"	20"	25.25"	FORK, ITA, CL3, 1.5X6X54, FT	70011494*
8,000	Full	1.5"	6"	60"	18.78"	20"	25.25"	FORK, ITA, CL3, 1.5X6X60, FT	70011495
8,000	Standard	1.5"	6"	42"	18.78"	20"	25.25"	FORK, ITA, CL3, 1.5X6X42, ST	70011533
8,000	Standard	1.5"	6"	48"	18.78"	20"	25.25"	FORK, ITA, CL3, 1.5X6X48, ST	70011534
8,000	Standard	1.5"	6"	54"	18.78"	20"	25.25"	FORK, ITA, CL3, 1.5X6X54, ST	70011535
8,000	Standard	1.5"	6"	60"	18.78"	20"	25.25"	FORK, ITA, CL3, 1.5X6X60, ST	70011536

NOTES: 96" forks are rated at 48" load center; Use only forks and fork combinations approved by the manufacturer of the unit.

*Also available as palletized forks (see page 20).

ITA Hook Forks (Class III cont.)

CLASS III

Capacity at 24" Load Center (lbs./pair)	Fork Taper	Thickness	Width	Length	Distance Between Hooks	Carriage Height	Back Height (from top of fork to bottom of fork)	Description	JLG Part Number
8,200	Full	1.5"	6"	48"	18.78"	20"	25.25"	FORK, ITA, CL3 1.5x6x48, FT	70010607
8,200	Full	1.5"	7"	48"	18.78"	20"	25.25"	FORK, ITA, CL3 1.5x7x48, FT	70010610
8,200	Full	1.5"	8"	48"	18.78"	20"	25.25"	FORK, ITA, CL3 1.5x8x48, FT	70010611
8,200	Full	1.75"	5"	36"	18.78"	20"	25.25"	FORK, CL3, 1.75X5X36, FT	70011481
8,200	Full	1.75"	5"	42"	18.78"	20"	25.25"	FORK, ITA, CL3 1.75x5x42, FT	70010608
8,200	Full	1.75"	5"	48"	18.78"	20"	25.25"	FORK, ITA, CL3 1.75x5x48, FT	70010609
8,200	Full	1.75"	5"	54"	18.78"	20"	25.25"	FORK, CL3, 1.75X5X54, FT	70011482
8,200	Full	1.75"	5"	60"	18.78"	20"	25.25"	FORK, CL3, 1.75X5X60, FT	70011483
8,200	Full	1.75"	5"	72"	18.78"	20"	25.25"	FORK, CL3, 1.75X5X72, FT	70011484
8,200	Full	1.75"	5"	84"	18.78"	20"	25.25"	FORK, CL3, 1.75X5X84, FT	70011485
8,200	Full	1.75"	5"	96"	18.78"	20"	25.25"	FORK, CL3, 1.75X5X96, FT	70011486
8,200	Full	1.75"	6"	48"	18.78"	20"	25.25"	FORK, CL3, 1.75X6X48, FT	70012244
8,200	Full	2"	5"	48"	18.78"	20"	25.25"	FORK, ITA, CL3 2x5x48, FT	70010612
8,200	Full	2"	5"	72"	18.78"	20"	25.25"	FORK, ITA, CL3 2x5x72, FT	70010613
8,200	Standard	1.75"	5"	36"	18.78"	20"	25.25"	FORK, ITA, CL3, 1.75X5X36, ST	70011525
8,200	Standard	1.75"	5"	42"	18.78"	20"	25.25"	FORK, ITA, CL3 1.75x5x42 ST	70010596
8,200	Standard	1.75"	5"	48"	18.78"	20"	25.25"	FORK, ITA, CL3 1.75x5x48 ST	70010597
8,200	Standard	1.75"	5"	54"	18.78"	20"	25.25"	FORK, ITA, CL3, 1.75X5X54, ST	70011526
8,200	Standard	1.75"	5"	60"	18.78"	20"	25.25"	FORK, ITA, CL3 1.75x5x60 ST	70010598
8,200	Standard	1.75"	5"	72"	18.78"	20"	25.25"	FORK, ITA, CL3, 1.75X5X72, ST	70011527*
8,200	Standard	1.75"	5"	84"	18.78"	20"	25.25"	FORK, ITA, CL3, 1.75X5X84, ST	70011528
8,200	Standard	1.75"	5"	96"	18.78"	20"	25.25"	FORK, ITA, CL3, 1.75X5X96, ST	70011529
8,200	Standard	2"	5"	42"	18.78"	20"	25.25"	FORK, ITA, CL3 2x5x42 ST	70010599
8,200	Standard	2"	5"	48"	18.78"	20"	25.25"	FORK, ITA, CL3 2x5x48 ST	70010600
8,200	Standard	2"	5"	54"	18.78"	20"	25.25"	FORK, ITA, CL3 2x5x54 ST	70010601*
8,200	Standard	2"	5"	60"	18.78"	20"	25.25"	FORK, ITA, CL3 2x5x60 ST	70010602
8,200	Standard	2"	5"	72"	18.78"	20"	25.25"	FORK, ITA, CL3 2x5x72 ST	70010603
8,200	Standard	2"	6"	42"	18.78"	20"	25.25"	FORK, ITA, CL3 2x6x42 ST	70010604
8,200	Standard	2"	6"	48"	18.78"	20"	25.25"	FORK, ITA, CL3 2x6x48 ST	70010605
8,200	Standard	2"	6"	54"	18.78"	20"	25.25"	FORK, ITA, CL3, 2X6X54, ST	70011470
8,200	Standard	2"	6"	60"	18.78"	20"	25.25"	FORK, ITA, CL3 2x6x60 ST	70010606
8,200	Standard	2"	6"	96"	18.78"	20"	25.25"	FORK, ITA, CL3, 2X6X96, ST	70011540
8,400	Standard	2"	4"	42"	18.78"	20"	25.25"	FORK, ITA, CL3, 2X4X42, ST	70011520
8,400	Standard	2"	4"	48"	18.78"	20"	25.25"	FORK, ITA, CL3, 2X4X48, ST	70011521
8,400	Standard	2"	4"	54"	18.78"	20"	25.25"	FORK, ITA, CL3, 2X4X54, ST	70011522
8,400	Standard	2"	4"	60"	18.78"	20"	25.25"	FORK, ITA, CL3, 2X4X60, ST	70011523
8,400	Standard	2"	4"	72"	18.78"	20"	25.25"	FORK, ITA, CL3, 2X4X72, ST	70011524*
9,600	Full	1.5"	7"	42"	18.78"	20"	25.25"	FORK, ITA, CL3, 1.5X7X42, FT	70011504
9,600	Full	1.5"	7"	54"	18.78"	20"	25.25"	FORK, ITA, CL3, 1.5X7X54, FT	70011505
9,600	Full	1.5"	7"	60"	18.78"	20"	25.25"	FORK, ITA, CL3, 1.5X7X60, FT	70011506
9,600	Standard	1.5"	7"	42"	18.78"	20"	25.25"	FORK, ITA, CL3, 1.5X7X42, ST	70011541

NOTES: 96" forks are rated at 48" load center; Use only forks and fork combinations approved by the manufacturer of the unit.

*Also available as palletized forks (see page 20).

ITA Hook Forks (Class III cont.)

CLASS III

Capacity at 24" Load Center (lbs./pair)	Fork Taper	Thickness	Width	Length	Distance Between Hooks	Carriage Height	Back Height (from top of fork to bottom of fork)	Description	JLG Part Number
9,600	Standard	1.5"	7"	48"	18.78"	20"	25.25"	FORK, ITA, CL3, 1.5X7X48, ST	70011542
9,600	Standard	1.5"	7"	54"	18.78"	20"	25.25"	FORK, ITA, CL3, 1.5X7X54, ST	70011543
9,600	Standard	1.5"	7"	60"	18.78"	20"	25.25"	FORK, ITA, CL3, 1.5X7X60, ST	70011544
10,000	Full	1.5"	8"	42"	18.78"	20"	25.25"	FORK, ITA, CL3, 1.5X8X42, FT	70011512
10,000	Full	1.5"	8"	54"	18.78"	20"	25.25"	FORK, ITA, CL3, 1.5X8X54, FT	70011513
10,000	Full	1.5"	8"	60"	18.78"	20"	25.25"	FORK, ITA, CL3, 1.5X8X60, FT	70011514
10,000	Full	1.75"	7"	42"	18.78"	20"	25.25"	FORK, ITA, CL3, 1.75X7X42, FT	70011507
10,000	Full	1.75"	7"	48"	18.78"	20"	25.25"	FORK, ITA, CL3, 1.75X7X48, FT	70011508*
10,000	Full	1.75"	7"	54"	18.78"	20"	25.25"	FORK, ITA, CL3, 1.75X7X54, FT	70011509
10,000	Full	1.75"	7"	60"	18.78"	20"	25.25"	FORK, ITA, CL3, 1.75X7X60, FT	70011510
10,000	Full	1.75"	7"	72"	18.78"	20"	25.25"	FORK, ITA, CL3, 1.75X7X72, FT	70011511
10,000	Full	2"	5"	36"	18.78"	20"	25.25"	FORK, CL3, 2X5X36, FT	70011487
10,000	Full	2"	5"	42"	18.78"	20"	25.25"	FORK, CL3, 2X5X42, FT	70011488
10,000	Full	2"	5"	54"	18.78"	20"	25.25"	FORK, CL3, 2X5X54, FT	70011489
10,000	Full	2"	5"	60"	18.78"	20"	25.25"	FORK, CL3, 2X5X60, FT	70011490
10,000	Full	2"	5"	84"	18.78"	20"	25.25"	FORK, CL3, 2X5X84, FT	70011491
10,000	Full	2"	5"	96"	18.78"	20"	25.25"	FORK, CL3, 2X5X96, FT	70011492
10,000	Full	2"	6"	36"	18.78"	20"	25.25"	FORK, ITA, CL3, 2X6X36, FT	70011496
10,000	Full	2"	6"	42"	18.78"	20"	25.25"	FORK, ITA, CL3, 2X6X42, FT	70011497
10,000	Full	2"	6"	48"	18.78"	20"	25.25"	FORK, ITA, CL3, 2X6X48, FT	70011498
10,000	Full	2"	6"	54"	18.78"	20"	25.25"	FORK, ITA, CL3, 2X6X54, FT	70011499
10,000	Full	2"	6"	72"	18.78"	20"	25.25"	FORK, ITA, CL3, 2X6X72, FT	70011501
10,000	Full	2"	6"	84"	18.78"	20"	25.25"	FORK, ITA, CL3, 2X6X84, FT	70011502
10,000	Full	2"	6"	96"	18.78"	20"	25.25"	FORK, ITA, CL3, 2X6X96, FT	70011503
10,000	Standard	1.5"	8"	42"	18.78"	20"	25.25"	FORK, ITA, CL3, 1.5X8X42, ST	70011550
10,000	Standard	1.5"	8"	48"	18.78"	20"	25.25"	FORK, ITA, CL3, 1.5X8X48, ST	70011551
10,000	Standard	1.5"	8"	54"	18.78"	20"	25.25"	FORK, ITA, CL3, 1.5X8X54, ST	70011552
10,000	Standard	1.5"	8"	60"	18.78"	20"	25.25"	FORK, ITA, CL3, 1.5X8X60, ST	70011553
10,000	Standard	1.75"	7"	42"	18.78"	20"	25.25"	FORK, ITA, CL3, 1.75X7X42, ST	70011545
10,000	Standard	1.75"	7"	48"	18.78"	20"	25.25"	FORK, ITA, CL3, 1.75X7X48, ST	70011546
10,000	Standard	1.75"	7"	54"	18.78"	20"	25.25"	FORK, ITA, CL3, 1.75X7X54, ST	70011547
10,000	Standard	1.75"	7"	60"	18.78"	20"	25.25"	FORK, ITA, CL3, 1.75X7X60, ST	70011548
10,000	Standard	1.75"	7"	72"	18.78"	20"	25.25"	FORK, ITA, CL3, 1.75X7X72, ST	70011549
10,000	Standard	2"	5"	36"	18.78"	20"	25.25"	FORK, ITA, CL3, 2X5X36, ST	70011530
10,000	Standard	2"	5"	84"	18.78"	20"	25.25"	FORK, ITA, CL3, 2X5X84, ST	70011531
10,000	Standard	2"	5"	96"	18.78"	20"	25.25"	FORK, ITA, CL3, 2X5X96, ST	70011532
10,000	Standard	2"	6"	36"	18.78"	20"	25.25"	FORK, ITA, CL3, 2X6X36, ST	70011537
10,000	Standard	2"	6"	72"	18.78"	20"	25.25"	FORK, ITA, CL3, 2x6x72, ST	70011538*
10,000	Standard	2"	6"	84"	18.78"	20"	25.25"	FORK, ITA, CL3, 2x6x84, ST	70011539
10,000	Standard	2"	6"	96"	18.78"	20"	25.25"	FORK, ITA, CL3, 2x6x96, ST	70011540*
12,600	Standard	2"	6"	60"	18.78"	20"	25.25"	FORK, ITA, CL3, 2X6X60, ST	70011500

NOTES: 96" forks are rated at 48" load center; Use only forks and fork combinations approved by the manufacturer of the unit.

*Also available as palletized forks (see page 20).

ITA Hook Forks (Class IV)

CLASS IV

Capacity at 24" Load Center (lbs./pair)	Fork Taper	Thickness	Width	Length	Distance Between Hooks	Carriage Height	Back Height (from top of fork to bottom of fork)	Description	JLG Part Number
12,600	Full	2"	6"	42"	23.54"	25"	33"	FORK, ITA, CL4, 2x6x42 FT	70011554
12,600	Full	2"	6"	48"	23.54"	25"	33"	FORK, ITA, CL4, 2x6x48 FT	70011555*
12,600	Full	2"	6"	54"	23.54"	25"	33"	FORK, ITA, CL4, 2x6x54 FT	70011556
12,600	Full	2"	6"	60"	23.54"	25"	33"	FORK, ITA, CL4, 2x6x60 FT	70011557
12,600	Full	2"	6"	72"	23.54"	25"	33"	FORK, ITA, CL4, 2x6x72 FT	70011558
12,600	Standard	2"	6"	42"	23.54"	25"	33"	FORK, ITA, CL4 2x6x42 ST	70010614
12,600	Standard	2"	6"	48"	23.54"	25"	33"	FORK, ITA, CL4 2x6x48 ST	70010615
12,600	Standard	2"	6"	54"	23.54"	25"	33"	FORK, ITA, CL4, 2x6x54 ST	70011587
12,600	Standard	2"	6"	60"	23.54"	25"	33"	FORK, ITA, CL4 2.0x6x60 ST	70010875
12,600	Standard	2"	6"	72"	23.54"	25"	33"	FORK, ITA, CL4, 2x6x72 ST	70011589*
13,400	Standard	1.5"	10"	42"	23.54"	25"	33"	FORK, ITA, CL 4 1.5x10x42 ST	70011684
13,400	Standard	1.5"	10"	48"	23.54"	25"	33"	FORK, ITA, CL 4 1.5x10x48 ST	70011685
13,400	Standard	1.5"	10"	54"	23.54"	25"	33"	FORK, ITA, CL 4 1.5x10x54 ST	70011686
13,400	Standard	1.5"	10"	60"	23.54"	25"	33"	FORK, ITA, CL 4 1.5x10x60 ST	70011687
13,400	Standard	1.5"	10"	72"	23.54"	25"	33"	FORK, ITA, CL 4 1.5x10x72 ST	70011688
15,200	Full	2"	7"	42"	23.54"	25"	33"	FORK, ITA, CL4, 2x7x42 FT	70011573
15,200	Full	2"	7"	48"	23.54"	25"	33"	FORK, ITA, CL4, 2x7x48 FT	70011574
15,200	Full	2"	7"	54"	23.54"	25"	33"	FORK, ITA, CL4, 2x7x54 FT	70011575
15,200	Full	2"	7"	60"	23.54"	25"	33"	FORK, ITA, CL4, 2x7x60 FT	70011576
15,200	Full	2"	7"	72"	23.54"	25"	33"	FORK, ITA, CL4, 2x7x72 FT	70011577
15,200	Full	2"	7"	84"	23.54"	25"	33"	FORK, ITA, CL4, 2x7x84 FT	70011578
15,200	Full	2"	7"	96"	23.54"	25"	33"	FORK, ITA, CL4, 2x7x96 FT	70011579
15,200	Standard	2"	7"	42"	23.54"	25"	33"	FORK, ITA, CL4, 2x7x42 ST	70011602
15,200	Standard	2"	7"	48"	23.54"	25"	33"	FORK, ITA, CL4, 2x7x48 ST	70011603
15,200	Standard	2"	7"	54"	23.54"	25"	33"	FORK, ITA, CL4, 2x7x54 ST	70011604
15,200	Standard	2"	7"	60"	23.54"	25"	33"	FORK, ITA, CL4, 2x7x60 ST	70011605
15,200	Standard	2"	7"	72"	23.54"	25"	33"	FORK, ITA, CL4, 2x7x72 ST	70011606
15,200	Standard	2"	7"	84"	23.54"	25"	33"	FORK, ITA, CL4, 2x7x84 ST	70011607
15,200	Standard	2"	7"	96"	23.54"	25"	33"	FORK, ITA, CL4, 2x7x96 ST	70011608*
16,200	Standard	1.5"	12"	42"	23.54"	25"	33"	FORK, ITA, CL 4 1.5x12x42 ST	70011689
16,200	Standard	1.5"	12"	48"	23.54"	25"	33"	FORK, ITA, CL 4 1.5x12x48 ST	70011690
16,200	Standard	1.5"	12"	54"	23.54"	25"	33"	FORK, ITA, CL 4 1.5x12x54 ST	70011691
16,200	Standard	1.5"	12"	60"	23.54"	25"	33"	FORK, ITA, CL 4 1.5x12x60 ST	70011692
16,800	Full	2"	8"	42"	23.54"	25"	33"	FORK, ITA, CL4, 2x8x42 FT	70011580
16,800	Full	2"	8"	48"	23.54"	25"	33"	FORK, ITA, CL4, 2x8x48 FT	70011581
16,800	Full	2"	8"	54"	23.54"	25"	33"	FORK, ITA, CL4, 2x8x54 FT	70011582
16,800	Full	2"	8"	60"	23.54"	25"	33"	FORK, ITA, CL4, 2x8x60 FT	70011583
16,800	Full	2"	8"	72"	23.54"	25"	33"	FORK, ITA, CL4, 2x8x72 FT	70011584
16,800	Full	2"	8"	84"	23.54"	25"	33"	FORK, ITA, CL4, 2x8x84 FT	70011585
16,800	Full	2"	8"	96"	23.54"	25"	33"	FORK, ITA, CL4, 2x8x96 FT	70011586

NOTES: 96" forks are rated at 48" load center; Use only forks and fork combinations approved by the manufacturer of the unit.

*Also available as palletized forks (see page 20).

ITA Hook Forks (Class IV, cont.)

CLASS IV

Capacity at 24" Load Center (lbs./pair)	Fork Taper	Thickness	Width	Length	Distance Between Hooks	Carriage Height	Back Height (from top of fork to bottom of fork)	Description	JLG Part Number
16,800	Standard	2"	6"	42"	23.54"	25"	33"	FORK, ITA, CL4, 2x8x42 ST	70011609
16,800	Standard	2"	6"	48"	23.54"	25"	33"	FORK, ITA, CL4, 2x8x48 ST	70011610*
16,800	Standard	2"	6"	54"	23.54"	25"	33"	FORK, ITA, CL4, 2x8x54 ST	70011611
16,800	Standard	2"	6"	60"	23.54"	25"	33"	FORK, ITA, CL4, 2x8x60 ST	70011612
16,800	Standard	2"	6"	72"	23.54"	25"	33"	FORK, ITA, CL4, 2x8x72 ST	70011613
16,800	Standard	2"	6"	84"	23.54"	25"	33"	FORK, ITA, CL4, 2x8x84 ST	70011614
16,800	Standard	2"	6"	96"	23.54"	25"	33"	FORK, ITA, CL4, 2x8x96 ST	70011615
17,400	Full	2"	10"	48"	23.54"	25"	33"	FORK, ITA, CL4, 2x10x48 ST	70011979
17,500	Full	2.25"	6"	42"	23.54"	25"	33"	FORK, ITA, CL4, 2.25x6x42 FT	70011559
17,500	Full	2.25"	6"	48"	23.54"	25"	33"	FORK, ITA, CL4, 2.25x6x48 FT	70011560
17,500	Full	2.25"	6"	54"	23.54"	25"	33"	FORK, ITA, CL4, 2.25x6x54 FT	70011561
17,500	Full	2.25"	6"	60"	23.54"	25"	33"	FORK, ITA, CL4, 2.25x6x60 FT	70011562
17,500	Full	2.25"	6"	72"	23.54"	25"	33"	FORK, ITA, CL4, 2.25x6x72 FT	70011563
17,500	Full	2.25"	6"	84"	23.54"	25"	33"	FORK, ITA, CL4, 2.25x6x84 FT	70011564
17,500	Full	2.25"	6"	96"	23.54"	25"	33"	FORK, ITA, CL4, 2.25x6x96 FT	70011565
17,500	Full	2.5"	6"	72"	23.54"	25"	33"	FORK, ITA, CL4, 2.5x6x72 FT	70011570
17,500	Full	2.5"	6"	96"	23.54"	25"	33"	FORK, ITA, CL4, 2.5x6x96 FT	70011572
17,500	Standard	2.25"	6"	42"	23.54"	25"	33"	FORK, ITA, CL4, 2.25x6x42 ST	70011590
17,500	Standard	2.25"	6"	48"	23.54"	25"	33"	FORK, ITA, CL4, 2.25x6x48 ST	70011591
17,500	Standard	2.25"	6"	54"	23.54"	25"	33"	FORK, ITA, CL4, 2.25x6x54 ST	70011592
17,500	Standard	2.25"	6"	60"	23.54"	25"	33"	FORK, ITA, CL4, 2.25x6x60 ST	70011593
17,500	Standard	2.25"	6"	72"	23.54"	25"	33"	FORK, ITA, CL4, 2.25x6x72 ST	70011594
17,500	Standard	2.25"	6"	84"	23.54"	25"	33"	FORK, ITA, CL4, 2.25x6x84 ST	70011595
17,500	Standard	2.25"	6"	96"	23.54"	25"	33"	FORK, ITA, CL4, 2.25x6x96 ST	70011596
17,500	Standard	2.5"	6"	72"	23.54"	25"	33"	FORK, ITA, CL4 2.5x6x72 ST	70010616
17,500	Standard	2.5"	6"	96"	23.54"	25"	33"	FORK, ITA, CL4 2.5x6x96 ST	70010617
21,100	Full	2.5"	6"	42"	23.54"	25"	33"	FORK, ITA, CL4, 2.5x6x42 FT	70011566
21,100	Full	2.5"	6"	48"	23.54"	25"	33"	FORK, ITA, CL4, 2.5x6x48 FT	70011567
21,100	Full	2.5"	6"	54"	23.54"	25"	33"	FORK, ITA, CL4, 2.5x6x54 FT	70011568
21,100	Full	2.5"	6"	60"	23.54"	25"	33"	FORK, ITA, CL4, 2.5x6x60 FT	70011569
21,100	Full	2.5"	6"	84"	23.54"	25"	33"	FORK, ITA, CL4, 2.5x6x84 FT	70011571
21,100	Standard	2.5"	6"	42"	23.54"	25"	33"	FORK, ITA, CL4, 2.5x6x42 ST	70011597
21,100	Standard	2.5"	6"	48"	23.54"	25"	33"	FORK, ITA, CL4, 2.5x6x48 ST	70011598*
21,100	Standard	2.5"	6"	54"	23.54"	25"	33"	FORK, ITA, CL4, 2.5x6x54 ST	70011599
21,100	Standard	2.5"	6"	84"	23.54"	25"	33"	FORK, ITA, CL4, 2.5x6x84 ST	70011601
21,100	Standard	2.5"	6"	60"	23.54"	25"	33"	FORK, ITA, CL4 2.5x6x60 ST	70010799

NOTES: 96" forks are rated at 48" load center; Use only forks and fork combinations approved by the manufacturer of the unit.

*Also available as palletized forks (see page 20).

Palletized ITA Forks

You can never have too much of a good thing! Buy in bulk and save even more money!

Features

- Free freight on orders of pallets of forks (20/pallet) when shipping to locations within the continental United States.
- Maximize uptime for you and your customers with forks already stocked in your location!

To request a size not listed, please see the New ITA Fork Request Form on page 48.



Class	Capacity at 24" Load Center (lbs./pair)	Fork Taper	Thickness	Width	Length	Forks per Pallet	Description	JLG Pallet Part Number	JLG Single Fork Part Number
II	4000	Standard	1.5"	4"	42"	20	PALLET OF FORKS, ITA, CLASS II, 1.5x4x42 ST	70011899	70010574
	4000	Standard	1.5"	4"	48"	20	PALLET OF FORKS, ITA, CLASS II, 1.5x4x48 ST	70011900	70010575
	5500	Full Tapered	1.75"	4"	54"	20	PALLET OF FORK, ITA, CL2, 1.75x4x54, FT	70011741	70011461
	5500	Full Tapered	1.75"	5"	54"	20	PALLET OF FORK, ITA, CL2, 1.75x5x54, FT	70011742	70011471
	5500	Full Tapered	1.75"	5"	60"	20	PALELT OF FORK, ITA, CL2, 1.75x5x60, FT	70011743	70011472
	5500	Standard	1.5"	5"	48"	20	PALLET OF FORKS, ITA CL 2, 1.5x5x48 ST	70011706	70010580
	5500	Standard	1.5"	5"	72"	20	PALLET OF FORK, ITA CL 2, 1.5x5x72 ST	70011739	70011274
	5500	Standard	1.75"	4"	72"	20	PALLET OF FORKS, ITA, CL2 1.75x4x72 ST	70011988	70010586
	5500	Standard	1.75"	5"	72"	20	PALLET OF FORK, ITA CL 2, 1.75x5x72 ST	70011738	70011278
III	8000	Full Tapered	1.5"	6"	42"	20	PALLET OF FORK, ITA, CL3, 1.5x6x42, FT	70011746	70011493
	8000	Full Tapered	1.5"	6"	54"	20	PALLET OF FORK, ITA, CL3, 1.5x6x54, FT	70011747	70011494
	8200	Standard	1.75"	5"	72"	20	PALLET OF FORK, ITA, CL3, 1.75x5x72, ST	70011751	70011527
	8200	Standard	2"	5"	54"	20	PALLETS OF FORK, ITA, CL3, 2x5x54 ST	70011430	70010601

NOTE: Use only forks and fork combinations approved by the manufacturer of the unit. Palletized forks ship from OH and Ontario with a lead time of 8 working days.

Class	Capacity at 24" Load Center (lbs./pair)	Fork Taper	Thickness	Width	Length	Forks per Pallet	Description	JLG Pallet Part Number	JLG Single Fork Part Number
III	8200	Standard	2"	6"	48"	20	PALLET OF FORKS, ITA, CL3, 2X6X48 ST	70012243	70010605
	8400	Standard	2"	4"	72"	20	PALLET OF FORK, ITA, CL3, 2X4X72, ST	70011750	70011524
	10,000	Full Tapered	1.75"	7"	48"	20	PALLET OF FORK, ITA, CL3, 1.75X7X48, FT	70011749	70011508
	10,000	Standard	2"	6"	72"	20	PALLET OF FORK, ITA, CL3, 2X6X72, ST	70011752	70011538
	10,000	Standard	2"	6"	96"	20	PALLET OF FORK, ITA, CL3, 2X6X96, ST	70011753	70011540
	12,600	Standard	2"	6"	60"	20	PALLET OF FORK, ITA, CL3, 2X6X60, ST	70011748	70011500
IV	12,600	Full Tapered	2"	6"	48"	20	PALLET OF FORK, ITA, CL4, 2X6X48 FT	70011754	70011555
	15,200	Standard	2"	7"	96"	20	PALLET OF FORK, ITA, CL4, 2X7X96 ST	70011757	70011608
	16,800	Standard	2"	6"	42"	20	PALLET OF FORK, ITA, CL4, 2.25X6X42 ST	70011755	70011589
	16,800	Standard	2"	8"	48"	20	PALLET OF FORK, ITA, CL4, 2X8X48 ST	70011758	70011610
	17,500	Standard	2"	6"	48"	20	PALLET OF FORK, ITA, CL4, 2.5X6X48 ST	70011756	70011598

NOTE: Use only forks and fork combinations approved by the manufacturer of the unit. Palletized forks ship from OH and Ontario with a lead time of 8 working days.

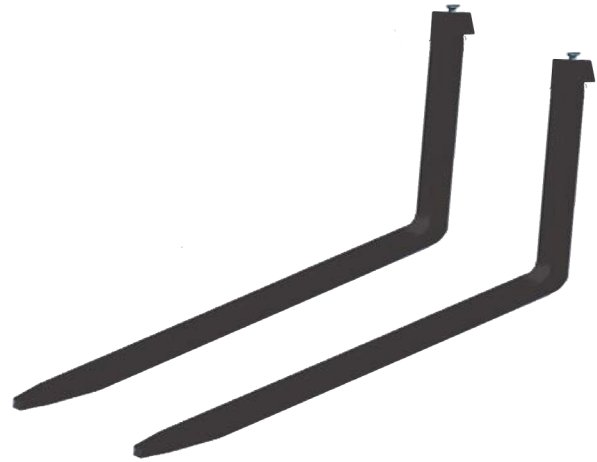
Block Forks

Block forks are used for lifting concrete or cement blocks in large numbers and are ideal for ITA carriages. The inside heel area can be ordered with an optional special "concave type" radius that will reduce damage to the edges of the product. The forged heel is enlarged for maximum strength.

Features

- Manufactured with tube, hook, or floating eye mountings
- Typical section sizes used for block handling forks are 2" x 1.5" and 2" x 2"
- Special sizes are available upon request

To request a size not listed, please see the New ITA Fork Request Form on page 48.



Class II

Capacity at 24" Load Center (lbs./pair)	Fork Taper	Thickness	Width	Length	Description	JLG Part Number
3200	Block	2"	1.5"	42"	FORK, BLOCK, CL2, 2x1.5x42	70011442
3200	Block	2"	1.5"	48"	FORK, BLOCK, CL2, 2x1.5x48	70011443
4200	Block	2"	2"	42"	FORK, BLOCK, CL2, 2x2x42	70011444
4200	Block	2"	2"	48"	FORK, BLOCK, CL2, 2x2x48	70011445*

Class III

Capacity at 24" Load Center (lbs./pair)	Fork Taper	Thickness	Width	Length	Description	JLG Part Number
3200	Block	2"	1.5"	42"	FORK, ITA CL 3, 1.5x2x42 BLOCK	70011287
3200	Block	2"	1.5"	48"	FORK, ITA CL 3, 1.5x2x48 BLOCK	70011288
4200	Block	2"	2"	42"	FORK, BLOCK, CL3, 1.75x5x36	70011479*
4200	Block	2"	2"	48"	FORK, BLOCK, CL3, 1.75x5x42	70011480*

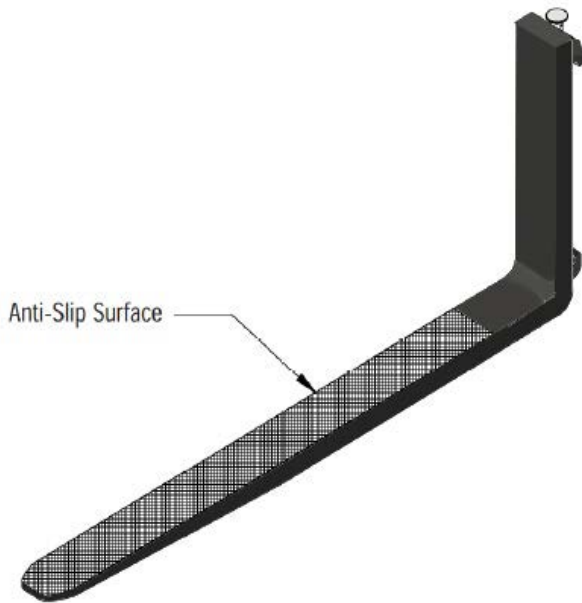
Palletized Block Forks

Class	Capacity at 24" Load Center (lbs./pair)	Fork Taper	Thickness	Width	Length	Forks per Pallet	Description	JLG Part Number	Single Fork Part Number
II	4200	Standard	2"	2"	48"	20	PALLET OF FORK, BLOCK, CL2, 2x2x48 ST	70011740	70011445
III	4200	Standard	2"	2"	42"	20	PALLET OF FORK, BLOCK, CL3, 2x2x42 ST	70011744	70011479
III	4200	Standard	2"	2"	48"	20	PALLET OF FORK, BLOCK, CL3, 2x2x48 ST	70011745	70011480

NOTE: Use only forks and fork combinations approved by the manufacturer of the unit.
Palletized forks ship from OH and Ontario with a lead time of 8 working days.
*Also available as palletized forks.

Anti-Slip Forks

Designed primarily to be used for handling plastic pallets, anti-slip forks have a durable abrasive coating applied to the top of the blade. The coating is a hardened steel alloy consisting of sharp peaks and valleys that provides a jagged surface to grip the pallet. The added grip helps to ensure that loads remain safely on the forks while moving, changing direction or stopping.



Features

- Superior grip over regular forks
- Hardened abrasive surface (55-63 Rockwell C)
- Coating adds minimal thickness to the fork
- Uniform surface ensures minimal damage to pallets/product
- Suitable for general applications including wooden pallets.
- Can be used in alternate applications such as handling product in cold storage facilities, etc.
- Special sizes are available upon request

To request a size not listed, please use the New ITA Request Form on page 48.

Class	Thickness	Width	Length	Fork Drop	Taper	Description	JLG Part Number
II	1.5"	4"	48"	21"	Standard	1.5x4x48 CL 2 standard tip and taper Anti Slip on the Blade	70011802

NOTE: Not recommended for use when contacting other metal or hard surface loads.

NOTES:

- If fork is bolted from the front, the holes will be counter-bored/sunk to alleviate projection of the bolt heads and damaging product.
- Obtaining the correct bolt-hole pattern for each set of forks is very important. If measuring the pattern on-site, it is important to first identify if the bolt pattern is inch or metric, as well as the attachment make and model information.
- Bolt holes should not be drilled on the outside heel radius. The start of a bolt-hole pattern should begin at a minimum of 6 in. (152.4mm) above the top of the blade.
- Usually the fork is bolted all the way up the upright.
- Use only forks and fork combinations approved by the manufacturer of the unit.

Bolt-On Forks

Bolt-On Forks are attached to the carriage with bolts instead of hooks or a pin. This design greatly diminishes any movement of the forks when loaded or when the lift truck is in motion.

Features

- Bolt-on design reduces deflection in the upright of the fork, thus reducing the overall deflection in most cases
- Forks can either be bolted on from the front or the back of the carriage
- Available in custom sizes

To request a size, please see the New Bolt-on Fork Request Form on page 50.



Carpet Pole

Carpet Poles are designed to handle rolls of carpet.

Features

- Smooth surface to prevent damage to the load
- Special sizes are available upon request

To request a size not listed, please see the New Shaft Fork Request Form on page 49.



Class	Length	Description	JLG Part Number
II	10 ft	Carpet Pole - 10' pole with class 2 mount	70011841

- NOTES:
- If fork is bolted from the front, the holes will be counter-bored/sunk to alleviate projection of the bolt heads and damaging product.
 - Obtaining the correct bolt-hole pattern for each set of forks is very important. If measuring the pattern on-site, it is important to first identify if the bolt pattern is inch or metric, as well as the attachment make and model information.
 - Bolt holes should not be drilled on the outside heel radius. The start of a bolt-hole pattern should begin at a minimum of 6 in. (152.4mm) above the top of the blade.
 - Usually the fork is bolted all the way up the upright.
 - Use only forks and fork combinations approved by the manufacturer of the unit.

Coil Boom

Coil Booms are designed for applications where it's necessary to handle concrete tubes and steel coils. Similar to carpet poles, but with a shorter boom with a larger diameter, our coil booms mount to a heavy-duty backplate, to reduce load loss.



Features

- Smooth surface to prevent damage to the load
- Quick-release for easy attachment
- Compatible with ITA II, III & IV Carriages
- Profiled bar end for easy entry into center of loads
- Capacity ratings up to 15,000 lbs. @ 24" load center are available
- Patented lock-pin assembly ensures stability (only ITA)
- Fork mounted versions are available, consult with parts department for further info.

To request a size not listed, please see the New Shaft Fork Request Form on page 49.

Class	Capacity at 24" Load Center (lbs./pair)	Diameter	Length	Description	JLG Part Number
III	12,000	4.5"	72"	Coil Boom, CL 3, 72" length, 10k lbs. capacity	70011844

NOTES:

- The chamfer/radius required to the edge of the blade will affect the lifting capacity of the fork.
- Capacity is reduced according to the size of the contour.
- A specific chamfer or radius size for the edge of the blades can be recommended.
- A custom radius can be applied if desired, to reduce damage to the product.
- The top of the upright can also be rounded to reduce damage to the product.
- Use only forks and fork combinations approved by the manufacturer of the unit.

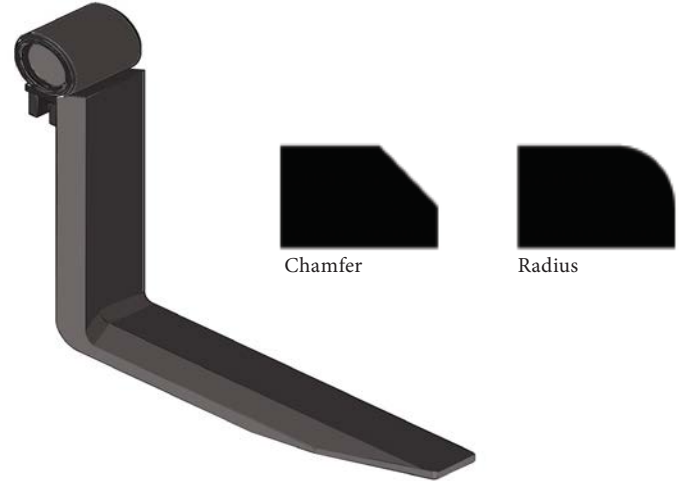
Coil Forks

Coil Forks are used to move steel coils, reels, etc. when straddling the load is desired. Other products, such as concrete pipes, can be moved with this type of fork.

Features

- Chamfered or radiused can be chosen and may be on the inside or outside edge of fork
- Special sizes are available upon request

To request a size not listed, please see the New Shaft Fork Request Form on page 49.



Class	Capacity at 24" Load Center (lbs./pair)	Thickness	Width	Length	Chamfered	Description	JLG Part Number
III	6746	2"	4"	48"	Both Sides for ID or OD	Coil Fork, 2x4x48, CL 2	70011836

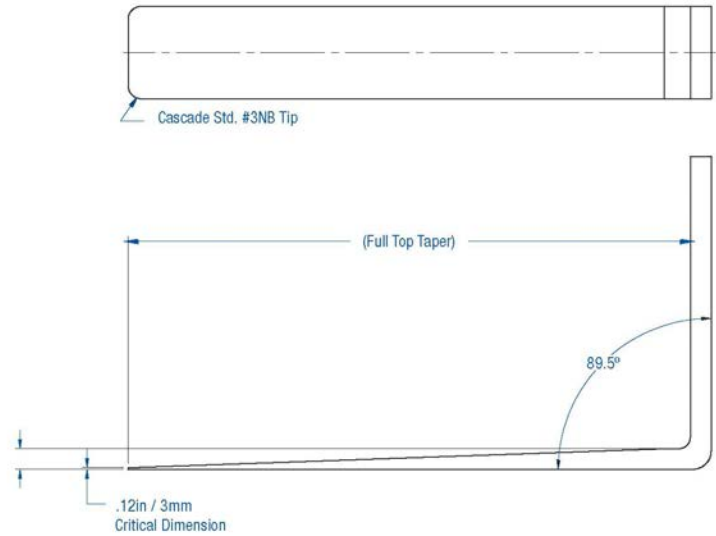
Corrugated Handling Forks

Corrugated Handling Forks have a box tip and are primarily used to wedge under and to lift corrugated sheets that are resting on the floor or similar flat surface where there is no skid or spacer separating it from this surface. They can also be used for other types of product and to separate a load (such as thin steel plates) that has no spacers in between the product. This allows for easy entry and reduced damage to the product.

Features

- Fork blade reduces in thickness at the tip to a sharp edge
- Fully top tapered and polished blade for a long, easy transition in the thickness.
- Rounded outside edges of the tip to allow for ease of entry
- Fork is available with a full bottom taper
- Available in many different widths
- Special sizes are available upon request

To request a size not listed, please see the New Standard ITA Request Form on page 48.



Class	Capacity at 24" Load Center (lbs./pair)	Thickness	Width	Length	Description	JLG Part Number
II	5000	1.5"	5"	48"	1.5 x 5 x 48 CL 2 Fully top tapered and polished with Box Tip	70011801

- NOTES:
- If fork is bolted from the front, the holes will be counter-bored/sunk to alleviate projection of the bolt heads and damaging product
 - Obtaining the correct bolt-hole pattern for each set of forks is very important. If measuring the pattern on-site, it is important to first identify if the bolt pattern is inch or metric, as well as the attachment make and model information.
 - Bolt holes should not be drilled on the outside heel radius. The start of a bolt-hole pattern should begin at a minimum of 6 in. (152.4mm) above the top of the blade.
 - Usually the fork is bolted all the way up the upright.
 - Use only forks and fork combinations approved by the manufacturer of the unit.

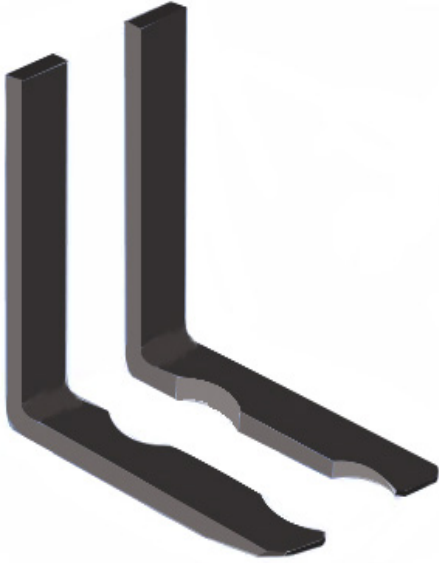
Drum Forks

Drum forks are designed to be used for lifting one or two drums or barrels at one time. The same forks can also be used for lifting conventional loads, such as skids, giving you a dual purpose attachment.

Features

- Left and right hand fork blades have an arc cut-away on the inside edge of the blade to match the drum diameter that is required.
- Fork blades can be supplied with either one or two cut-outs
- Quickly move barrels and drums
- Special sizes are available upon request

To request a size not listed, please see the New Standard ITA Request Form on page 48.



Class	Thickness	Width	Length	Description	JLG Part Number
II	1.75"	4"	48"	Drum Fork, 1.75x4x48	70011797
	1.75"	4"	60"	Drum Fork, 1.75x4x60	70011798
	1.75"	4"	72"	Drum Fork, 1.75x4x72	70011799
	1.75"	5"	48"	Drum Fork, 1.75x5x48	70011800

NOTE: Use only forks and fork combinations approved by the manufacturer of the unit.

Folding Forks

Folding Forks are designed to fold at the heel on a pin, allowing the blade to be placed in a vertical position and secured with a chain. Folding Forks are often necessary when operating in a confined and restricted work environment and for lift trucks that are transported to different work sites on trailers.

Features

- Includes a blade, shank, pin, and either a hook or shaft mount attachment.
- Blade is held in the vertical position with a chain attached to a pin that wraps around the blade, locking into a pin retainer.
- Allows lift trucks to maneuver in areas where movement is restricted, such as elevators or aisles
- Special sizes are available upon request

To request a size not listed, please see the New Standard ITA Request Form on page 48 and the New Shaft Fork Request Form on page 49. The mounting of your forks will determine which form to use.



Class	Capacity at 24" Load Center (lbs./pair)	Thickness	Width	Length	Outside Diameter	Description	JLG Part Number
II	4000	2"	4"	48"	Standard Tip and Taper	2x4x48 class 2 folding fork standard tip and taper	70011792

NOTE: Use only forks and fork combinations approved by the manufacturer of the unit.

Gypsum Forks and Pads

Gypsum Forks have been specially designed with product protection in mind. The unique blade design and vertical protective upright provides the optimum product protection when handling gypsum wallboard or other similar products.

Features - Forks

- Hook or shaft type mountings are available to suit your lift truck
- Bent and upset heel section
- Polished blades with all sharp corners removed prevents damage to gypsum board
- Double-sided bevel at the tip for easy entry between gypsum sheets - Fork widths are normally up to 12" (300mm)
- Square corner-in heel prevents damage to edge of gypsum sheet
- High back support is available
- Provides optimum product protection when handling gypsum wallboard
- Special sizes are available upon request

Features - Pads

- Replacement pads are available
- The slide pad is rated at 70 durometer.
- Hardness of the urethane pad is similar to that of an automobile tire
- Durable and impervious to grease and do not mark the sheet
- Bonded to a steel plate for stability and rigidity
- Replacement is quick and simple with a slide-in feature to maximize uptime

To request a size not listed, please see the New ITA Fork Request Form on page 48.

Fork Taper	Capacity at 24" Load Center (lbs./pair)	Thickness	Width	Length	Eye Diameter	Fork Drop	Description	JLG Single Fork Part Number	JLG Pallet Part Number	Forks per pallet
Drywall	5000	1.75"	4"	48"	2"	29"	FORK, Drywall, 2 eye, 1.75x4x48, 29 fork drop	70011403	70011837	20
	5000	1.75"	4"	48"	2.25"	29"	FORK, Drywall, 2.25 eye, 1.75x4x48, 29 fork drop	70011415	70011838	20
	5000	1.75"	7"	48"	2"	24"	FORK, Drywall, 2 eye, 1.75x7x48, 24 fork drop	70011722	70011766	20

NOTE: Use only forks and fork combinations approved by the manufacturer of the unit.

Inverted Forks

Inverted Forks are permanently mounted (upside down) opposite the way we generally see forks attached to a lift truck and are typically used for lifting bags or sacks that have a loop or entry point above the product. Inverted Forks also extend the overall lifting height compared to regularly mounted forks on the same mast.

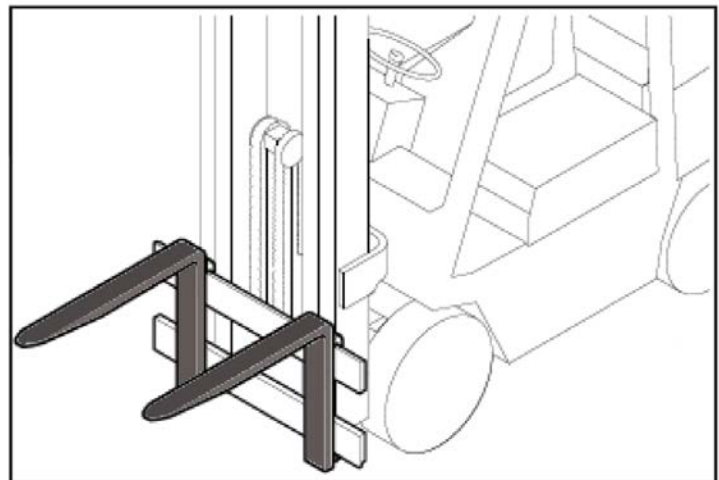
Features

- The upper load bearing hook is fitted relative to the back die radius so that the hook is welded to the flat part of the shank
- A load bearing upper hook may be requested in both mounting locations if the forks are also required to function in the normal position
- Other mounting options, such as Shaft or Bolt-On, are available upon request
- Great for lifting bags or sacks that have a loop or entry point
- Extends the overall lifting height compared to regularly mounted forks on the same mast
- Rounded top blade prevents damage to the sack straps
- Suits all pin type carriages
- Special sizes are available upon request

To request a size not listed, please see the New ITA Fork Request Form on page 48.



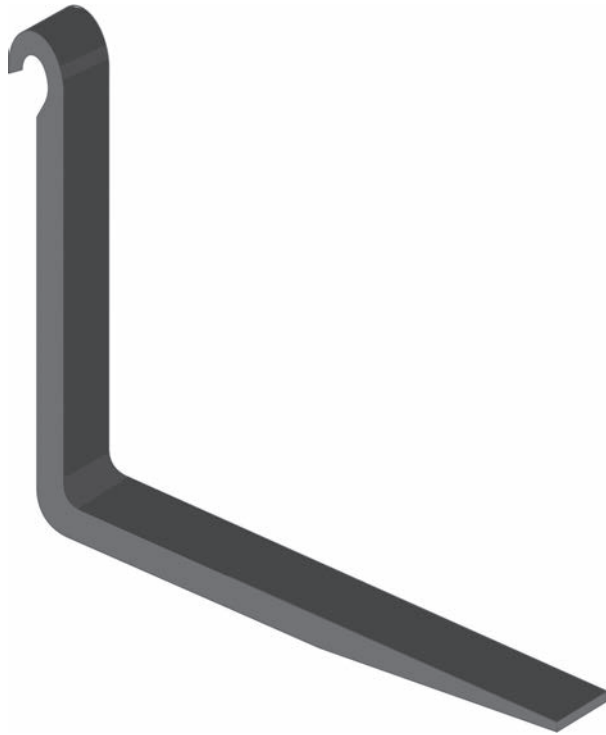
Class	Capacity at 24" Load Center (lbs./pair)	Thickness	Width	Length	Description	JLG Part Number
II	4012	2"	4"	48"	Inverted fork, 2x4x48, CL 2	70011835



Forks shown in inverted position.

NOTES:

- Due to the inverted orientation, the capacity rating of the fork is reduced by 15%.
- Use only forks and fork combinations approved by the manufacturer of the unit.



Quick Detach Forks

Quick Detach (QD) Forks are designed to be easily and quickly removed from the lift truck’s carriage when required. The key feature is the upper hook which allows the fork to be removed without the need to remove the carriage/fork retaining bar, which would result in downtime for the lift truck. This design is usually required for big forks that are difficult to handle due to their weight, or for handling a different lifting tool for a different application (i.e. coil ram).

Features

- Quick interchangeability saves time and money
- Open style hook which could fit over either a round or square carriage bar
- Special sizes are available upon request

To request a size, please see the New ITA Fork Request Form on page 48.

Class	Capacity at 24" Load Center	Thickness	Width	Length	Description	JLG Part Number
Please see the New Standard ITA Fork Request Form						

NOTES:

- Depending on the surface the truck is working on, each fork may require a lower retaining fixture to prevent the fork from unintentionally disengaging.
- Owners and operators must ensure a safe and secured method and area for removing the forks. To prevent accidents or injury, refer to ANSI/ITSDF B56.1-2012.
- Use only forks and fork combinations approved by the manufacturer of the unit.

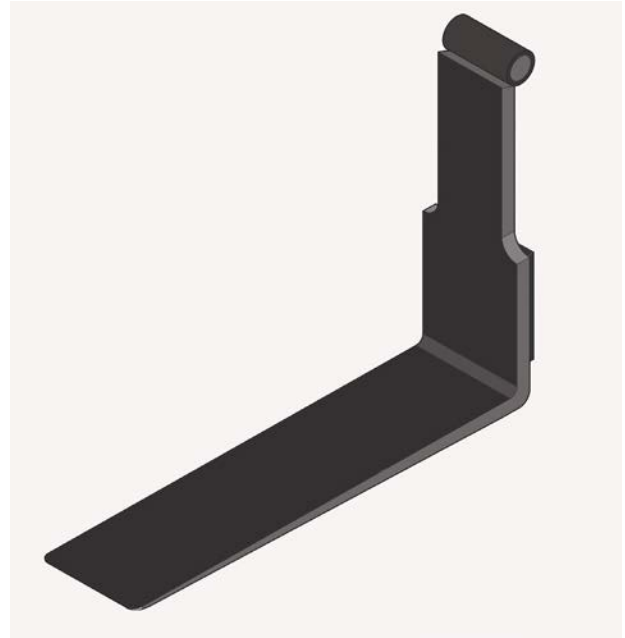
Peek-A-Boo Forks

Peek-A-Boo (PAB) Forks have been developed primarily to increase the visibility of the lift truck driver. This type of fork is usually wide, with a blade less than 50mm thick and used predominantly in the lumber industry. Reducing the shank width is possible because the stress exerted on the fork while lifting diminishes gradually as one progresses towards the top of the shank.

Features

- Can be custom ordered to fit either in a predetermined pocket with a wider tube for stability, or as per end-user request
- Special sizes are available upon request

To request a size not listed, please see the New Shaft Fork Request Form on page 48.



Class	Thickness	Width	Length	Fork Drop	Description	JLG Part Number
III	Call or fill in the request form to determine the thickness, width and length needed			22.36"	Peek-A-Boo Class 3	70011782
IV				29.25"	Peek-A-Boo Class 4	70011783

NOTE: The lower part of the cut-away which forms the PAB Fork is not recommended to be less than 25mm above the top of the lower carriage bar.

Roller Forks

The rollers (bearings) allow the forks to move smoothly and effortlessly, creating less wear and stress on the hydraulic system.

Features

- Allows for smooth fork movement
- Special sizes are available upon request

To request a size, please see the New Shaft Fork Request Form on page 49.



NOTE: Use only forks and fork combinations approved by the manufacturer of the unit.

Rotator Forks

Rotator Forks are attached to a rotator attachment which can invert the forks. Usually the forks fit into pockets in a bin that needs to be tilted or inverted to empty the contents.

Features

- Each fork has three hooks, one at the top, middle and bottom of the upright.
- Lower hook on top when inverted requiring the strength of an upper size hook
- The middle hook is at a special spacing (different for Class II, III, and IV)
- Special sizes are available upon request

To request a size not listed, please see the New ITA Request Form on page 48.

Class	Thickness	Width	Length	Description	JLG Part Number
II	1.75"	4"	42"	Rotator Fork, 1.75x4x42	70011793
	1.75"	4"	60"	Rotator Fork, 1.75x4x60	70011794
	1.75"	4"	72"	Rotator Fork, 1.75x4x72	70011795
	1.75"	4"	48"	Rotator Fork, 1.75x5x48	70011796

NOTES:

- When utilized in the inverted position, capacity is reduced by 15%.
- Use only forks and fork combinations approved by the manufacturer of the unit.

Spark Retardant Forks

Spark Retardant Forks are used on lift trucks operating in hazardous locations. These included places such as chemical plants, grain elevators, mines, paint plants, munitions, arsenal manufacturing and storage facilities.

Features

- Covered in ASTM B36 alloy 6 brass that is 0.125" thick (except rear of upright and hooks) and brazed 100% along all seams.
- Ideal for hazardous locations
- Special sizes are available upon request

To request a size not listed, please see the New ITA Request Form on page 48.



Class	Capacity at 24" Load Center (lbs./pair)	Thickness	Width	Length	Tip and Taper	Description	JLG Part Number
II	5000	1.5"	4"	48"	Standard	Brass Clad CL 2, 1.5x4x48 ST	70011804
	5000	1.75"	4"	42"	Standard	Brass Clad CL 2, 1.75x4x42	70011784
	5000	2"	4"	42"	Standard	Brass Clad CL 2, 2x4x42	70011786
III	5000	1.75"	5"	42"	Standard	Brass Clad CL 3, 1.75x5x42	70011785
	5000	2"	4"	42"	Standard	Brass Clad CL 3, 2x4x42	70011787

NOTE: Use only forks and fork combinations approved by the manufacturer of the unit.



Stainless Steel Forks

Stainless Steel Clad Forks are used in highly sanitary applications such as the food and beverage industry.

Features

- Highly sanitary for food and beverage handling
- Special sizes are available upon request

To request a size not listed, please see the New ITA Request Form on page 48.

Class	Capacity at 24" Load Center (lbs./pair)	Thickness	Width	Length	Tip and Taper	Description	JLG Part Number
II	5000	1.5"	4"	48"	Standard	Stainless Steel, CL 2, 1.5x4x48 ST	70011805

NOTE: Use only forks and fork combinations approved by the manufacturer of the unit.

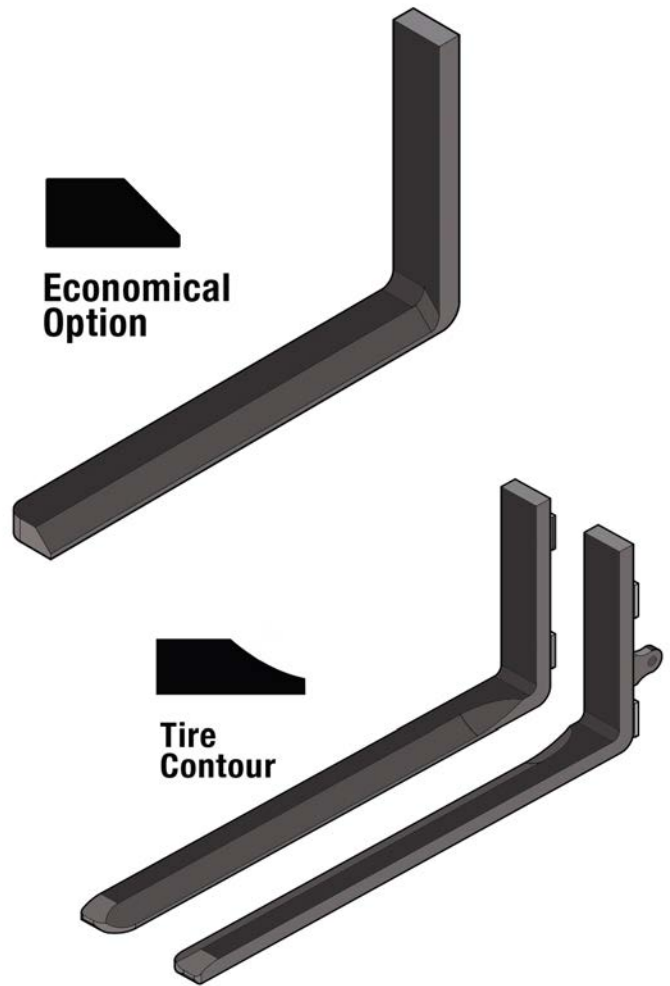
Tire Forks

Tire forks are used for lifting tires of all sizes. The blade can be custom shaped for the variety of sizes of tires on the market.

Features

- Blades of the left and right hand fork have a special radius to the top inside edge of each blade
- Edges of the radius are finished with soft, round edges to prevent damage to new product
- Forks are usually fitted to the carriage with bolts
- Economical 45 degree Chamfer (angle) option is available
- Special sizes are available upon request

To request a size not listed, please see the New Standard ITA Request Form on page 48.



Class	Capacity at 24" Load Center (lbs./pair)	Thickness	Width	Length	Description	JLG Part Number
II	5180	1.75"	4"	48"	Tire Fork, 1.75x4x48, CL2 RH, one edge chamfered, order one of each LH and RH	70011842
	5180	1.75"	4"	48"	Tire Fork, 1.75x4x48, CL2 LH, one edge chamfered, order one of each LH and RH	70011843

NOTES:

- Customer must order one of each - right hand and left hand fork.
- Use only forks and fork combinations approved by the manufacturer of the unit.

Pin Kit Assemblies

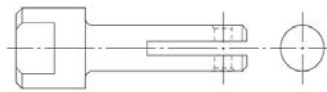
Available Pin Kit Assemblies provides replacement parts instead of costly fork replacements. Order along with forks and other parts for added convenience and maximized uptime.

Features

- Knob Style Assembly Kit contains one each of metal knob, slotted pin, spring and pin.
- Lever Style Assembly kit contains one each of pin, lever, roll pin and spring.



Knob Style



Lever Style

Mounting Class	Diameter of Pin	Pin Style	JLG Part Number
II	1/2"	Knob Style	70011829
II	5/8"	Lever Style	70011830
III	1/2"	Knob Style	70011831
III	5/8"	Lever Style	70011832
IV	1/2"	Knob Style	70011833
IV	5/8"	Lever Style	70011834

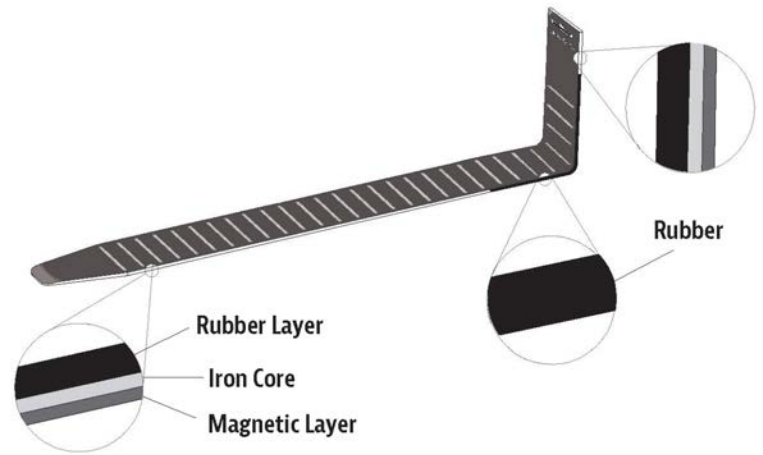
NOTE: Use only forks and fork combinations approved by the manufacturer of the unit.

DAGS - Magnetic Fork Covers

DAGS - Magnetic Fork Covers are ideal for handling a wide variety of loads. Designed for use in any industrial sector where forks are used to lift products that could be damaged from contact with bare forks.

Features

- Installs or removes in seconds without any mechanical or electrical work
- Securely sticks to forks
- 70 durometer (shore A) black rubber upper layer, a metal inner core and a bottom magnetic layer is resistant to abrasions, atmospheric agents and oil
- Resistant to abrasions, atmospheric agents and oil
- Rib design provides additional coefficient of friction
- Stores within easy reach on any flat surface on the forklift
- Lightweight - does not limit the truck's net capacity
- The magnetic field generated by the DAGS does not interfere with other electronic instruments
- Temperature range from -22 degrees F (-30 degrees C) to 284 degrees F (140 degrees C)
- Special sizes are available upon request



For any size not listed, please contact JLG Parts Contact Center.

COVERS BLADE AND SHANK		USE WITH FORK SIZE		Description	JLG Part Number
Weight per Pair (lbs.)	Thickness of DAGS	Width	Length		
15.4	1/4"	3.2"	36" - 54"	DAGS COVER BLADE AND SHANK- 3.2x36-54"	70011806
11.9	1/4"	4"	42" - 48"	DAGS COVER BLADE AND SHANK - 4x42-48"	70011807
14.1	1/4"	4"	48" - 54"	DAGS COVER BLADE AND SHANK- 4x48-54"	70011808
15.4	1/4"	5"	42" - 48"	DAGS COVER BLADE AND SHANK- 5x42-48"	70011809
17.6	1/4"	5"	48" - 54"	DAGS COVER BLADE AND SHANK - 5x48-54"	70011810
19.4	5/16"	6" - 8"	42" - 48"	DAGS COVER BLADE AND SHANK - 6-8x42-48"	70011811
22.1	5/16"	6" - 8"	48" - 54"	DAGS COVER BLADE AND SHANK- 6-8x48-54"	70011812

COVERS BLADE ONLY		USE WITH FORK SIZE		Description	JLG Part Number
Weight per Pair (lbs.)	Thickness of DAGS	Width	Length		
15	1/4"	4"	55" - 63"	DAGS COVER BLADE 4x55-63"	70011813
21.6	1/4"	5"	55" - 66.5"	DAGS COVER BLADE 5x55-66.5"	70011814
25.1	5/16"	5"	70" - 81"	DAGS COVER BLADE 5x70-81"	70011815
27.3	5/16"	6"	55" - 63"	DAGS COVER BLADE 6x55-63"	70011816
31.8	5/16"	6"	70" - 81"	DAGS COVER BLADE 6x70-81"	70011817
50.7	5/16"	6" - 8"	86.5" - 88.5"	DAGS COVER BLADE 6-8x86.5-88.5"	70011818
63.1	5/16"	6" - 8"	86.5" - 100"	DAGS COVER BLADE 6-8x86.5-100"	70011819



Fork Extensions

Provide additional support to lift large or long objects with fork extensions. These factory-approved extensions are made with heavy duty steel, and are designed for uniform loading.

Features

- Factory approved
- Sold as quantity of one (two required per machine)
- Includes pins
- Non-removable strap holds forks in place
- Readily available to fit 4 in. (100mm), 5 in. (122mm), 6 in. (150mm) and 7 in. (180mm) wide forks and up to 96" (2438mm) long
- Heavy-duty and special extensions are available upon request
- Intended to carry uniform loads no longer than the length of the extension
- Built in compliance with the ANSI/ITSDF Standard B56.1-2012

For any size not listed, please contact the JLG Parts Contact Center.

Width	Length	JLG Part Number
4"	48"	70011657
	54"	70011658
	60"	70011659
	63"	70011660
	66"	70011661
	72"	70011662
	84"	70011663
	90"	70011664
	96"	70011665

Width	Length	JLG Part Number
6"	48"	70011673
	54"	70011674
	60"	70011675
	72"	70011676
	84"	70011677
	90"	70011678
	96"	70011679

Width	Length	JLG Part Number
5"	60"	70011666
	63"	70011667
	66"	70011668
	72"	70011669
	84"	70011670
	90"	70011671
	96"	70011672

Width	Length	JLG Part Number
7"	54"	70011680
	72"	70011681
	96"	70011682

NOTES:
 - In accordance with ITA recommended practices, all JLG Fork extensions are identified for use on a specific fork length and cross section. Using a fork extension on a fork size other than that designated can create a safety hazard.
 - Extension length must not exceed 1.5 x fork length
 - Fork extensions should never be tip-loaded
 - When ordering extensions, please state width, thickness and length of forks. Extensions suit 2" maximum fork thickness only. Other sizes available upon request.

Fork Wear Caliper

Worn-out forks are unreliable and inefficient on the job site. A fork wear caliper can help you identify fork wear before it becomes an issue. If the inner caliper jaws touch the fork, wear is within tolerance and the fork is okay for use. If the inner jaws pass over the fork, wear is more than 10%. Once fork wear is over 10%, the fork must be removed from service and replaced.

Features

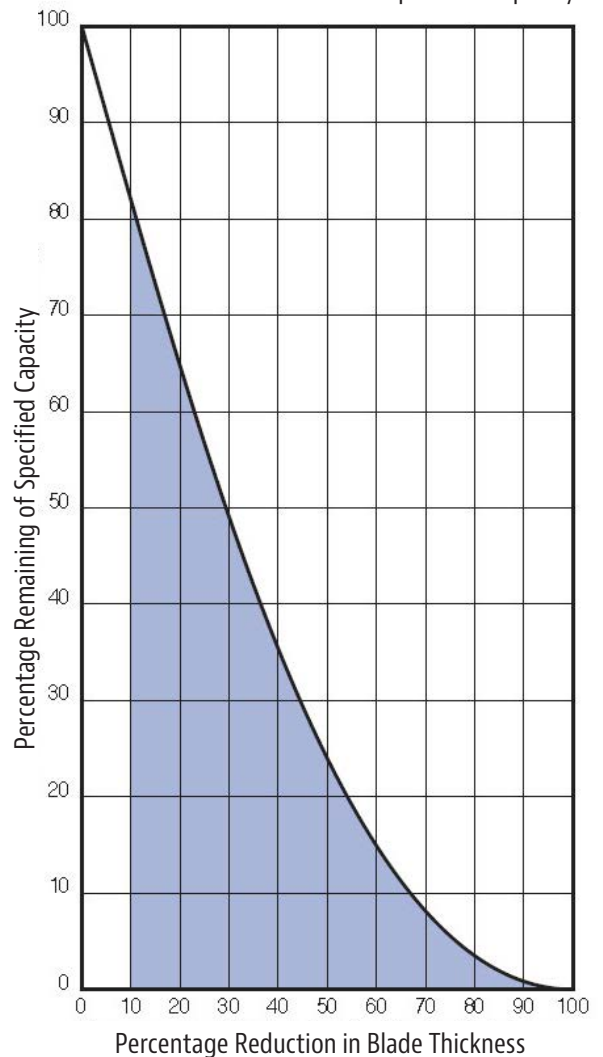
- Pocket portable
- Easy to use on the job
- Measure the thickness of the fork arm shank



Description	JLG Part Number
Fork Inspection Safety Kit (Includes fork arm wear caliper guide, inspection log and caliper)	70011840
Caliper	7025304



10% wear = 20% reduction in operation capacity



This chart shows how fork wear reduces truck capacity. ANSI/ITSDF B56.1-2012 standards require that each fork be at least half the capacity of the truck at the rated load center distance as shown on the truck nameplate. Refer to ANSI website: www.itsdf.org/pB56.asp

NOTE: Wear calipers are not recommended for full-taper forks. Occasionally forks are manufactured with the blade thinner than the upright. Contact vendor for verification of original blade thickness (fork identification number required). See stamping on fork both sides of upright.





Custom Fork Measurement Information and Order Forms

Please use the information in the following pages to identify and order custom forks.

Information

- Collecting Fork Shaft Data
- Fork Tips & Bevels
- Capacity Charts

Request Forms

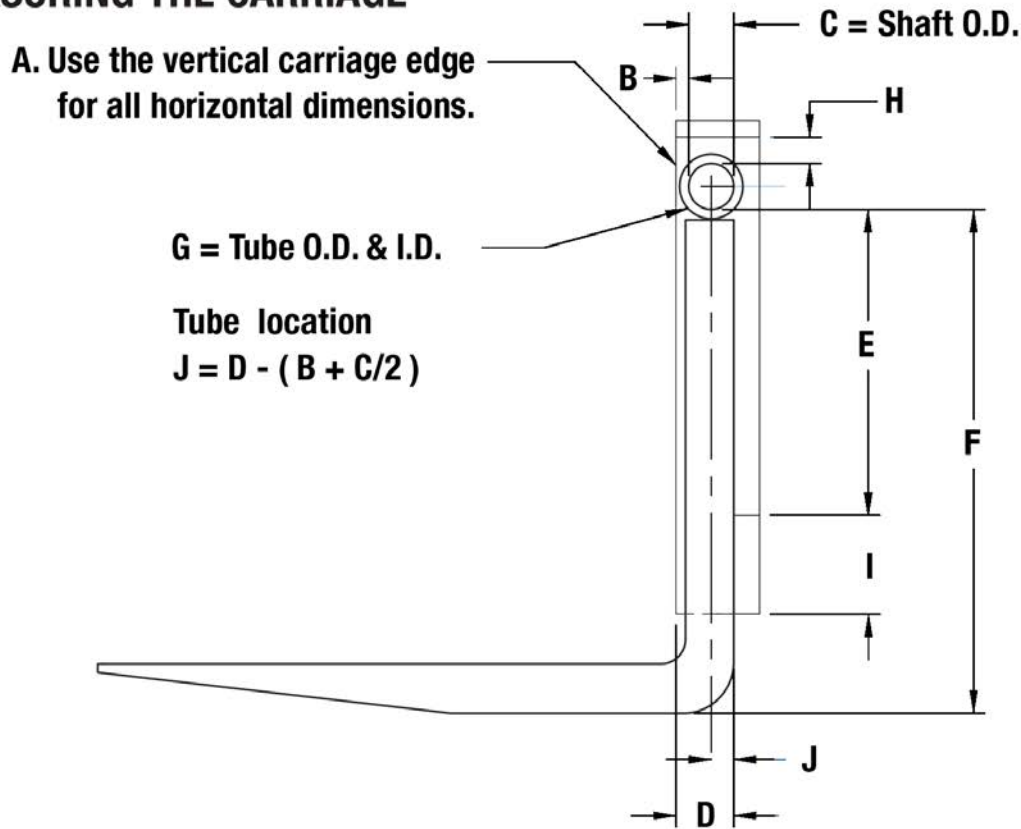
- New ITA Fork Request Form
- New Shaft Fork Request Form
- New Bolt-on Fork Request Form
- New Square Carriage Fork Request Form

For any questions, or additional assistance, please contact the JLG Parts Contact Center at 877-JLG-LIFT.

Collecting Fork Shaft Data

The diagram shown is to assist in the collection of data for the fork when ordering a shaft fork for a custom carriage.

MEASURING THE CARRIAGE



Features:

- A. Use the outer straight edge of the vertical carriage support at one side (left or right) as a common datum to measure from.
- B. Measure horizontally across to the front of the shaft that supports the fork.
- C. Measure the diameter of the shaft (preferably away from the center of the shaft as it may be worn).
- D. Measure horizontally across to front face of the lower carriage bar.
- E. Measure vertically from the underside of the shaft to the top of the lower carriage bar.
- F. First check for wear on the underside of blade just in front of the outside heel. If there is no wear, lower the forks onto a flat smooth surface and measure from that surface up to the underside of the shaft to get a vertical dimension.
- G. Measure the I.D. and O.D. of the tube. Check if the tube has a bushing in the I.D.
- H. Check for any other restrictions for the tube that can limit the tube O.D. such as a top carriage cross-member.
- I. Measure the carriage bar height.
- J. Use the TUBE LOCATION formula above to establish INSET, OFFSET or INLINE value.

Fork Tips and Bevels

Fork Tips:

No. 1



No. 2



No. 3



NOTES:

- ▶ No. 1 tip is standard on forks up to and including 7" (180mm) wide.
- ▶ No. 2 tip is standard on Block Handling Forks.
- ▶ No. 3 tip is standard on forks wider than 7" (180mm).

Bevel Options:



Standard Taper, No Bevel



Full Taper & Polish with Bottom Bevel



Full Taper & Polish with Top Bevel

Note: Other bevels available.

Tapers:



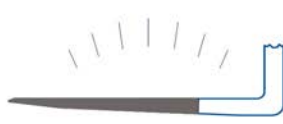
Standard Taper



Full Top Taper & Polish



Full Bottom Taper & Polish



Two-Stage Taper & Polish

Capacity Charts

Use the below charts as an easy guide to aid in choosing a fork size. Then, fill out the following page to order your specialty fork. Please provide the eye, drop and length.

Thickness	Width	Capacity per fork at 24 in. load center (lbs.)	Capacity per fork at 36 in. load center (lbs.)	Capacity per fork at 48 in. load center (lbs.)
1.25"	4"	3,700	2,400	1,850
1.5"	3"	4,200	2,800	2,000
1.5"	4"	5,500	3,600	2,750
1.5"	5"	6,400	4,200	3,200
1.5"	6"	8,000	5,400	4,000
1.5"	7"	9,600	6,400	4,800
1.5"	8"	10,800	7,200	5,400
1.5"	10"	13,400	9,000	6,600
1.5"	12"	16,200	10,800	8,000
1.5"	15"	20,400	13,600	10,200
1.75"	3"	5,400	3,600	2,600
1.75"	4"	6,800	4,400	3,400
1.75"	5"	8,200	5,400	4,000
1.75"	6"	10,200	6,800	5,000
1.75"	7"	12,200	8,200	6,000
2"	1.5"	3,200	2,200	1,600
2"	2"	4,200	2,800	2,000
2"	3"	6,600	4,400	3,300
2"	4"	8,400	5,600	4,200
2"	5"	10,200	6,800	5,000
2"	6"	12,600	8,400	6,200
2"	7"	15,200	10,000	7,600
2"	8"	16,800	11,200	8,400
2"	10"	21,000	14,000	10,400
2"	12"	25,200	16,800	12,600
2"	15"	32,000	21,400	16,000
2"	18"	38,800	25,800	19,400
2.25"	4"	12,000	8,000	6,000
2.25"	5"	15,200	10,000	7,600
2.25"	6"	18,200	12,000	9,000
2.5"	5"	17,800	11,800	8,800
2.5"	6"	21,400	14,200	10,600
2.5"	7"	25,600	17,000	12,800
2.5"	8"	28,400	19,000	14,200
2.5"	10"	35,600	23,800	17,800
2.5"	12"	42,800	28,400	21,400
2.5"	15"	54,200	36,000	27,000
2.75"	6"	24,800	16,400	12,400
2.75"	7"	29,800	19,800	14,800
2.75"	8"	33,000	22,000	16,400
2.75"	10"	41,400	27,600	20,600
2.75"	12"	49,600	33,000	24,800

NOTE: Capacity for rotator and inverted forks, deduct 15%.

Capacity Charts (cont.)

Thickness	Width	Capacity per fork at 24 in. load center (lbs.)	Capacity per fork at 36 in. load center (lbs.)	Capacity per fork at 48 in. load center (lbs.)
3"	6"	28,400	19,000	14,200
3"	7"	34,200	22,800	17,000
3"	8"	38,000	25,200	19,000
3"	9"	43,400	28,900	21,700
3"	10"	47,400	31,600	23,600
3"	12"	57,000	38,000	28,400
3.25"	8"	48,800	32,400	24,400
3.25"	10"	61,000	41,200	30,500
3.5"	7"	49,200	32,800	24,600
3.5"	8"	54,600	36,400	27,200
3.5"	10"	68,400	45,600	34,200
3.5"	12"	82,000	54,650	41,000
3.5"	15"	104,000	69,350	52,000
3.75"	8"	61,000	40,600	30,400
3.75"	11.5"	89,000	59,200	44,400
4"	8"	67,600	45,000	33,800
4"	10"	84,400	56,200	42,200
4"	12"	101,400	67,600	50,600
4"	16"	137,300	91,500	68,650
4.25"	11"	104,200	69,450	52,100
4.25"	12"	122,600	81,800	61,200
4.5"	8"	89,400	59,600	44,600
4.5"	10"	111,600	74,400	55,800
4.5"	12"	134,000	89,400	67,000
4.75"	12"	148,400	98,950	74,200
5"	9"	96,400	64,300	48,200
5"	10"	132,000	88,000	66,000
5"	12"	158,400	105,600	79,200
5.5"	12"	198,600	132,400	99,200
6"	12"	228,000	152,000	114,000
6"	14"	266,200	177,400	133,000
6"	16"	304,200	206,100	152,100

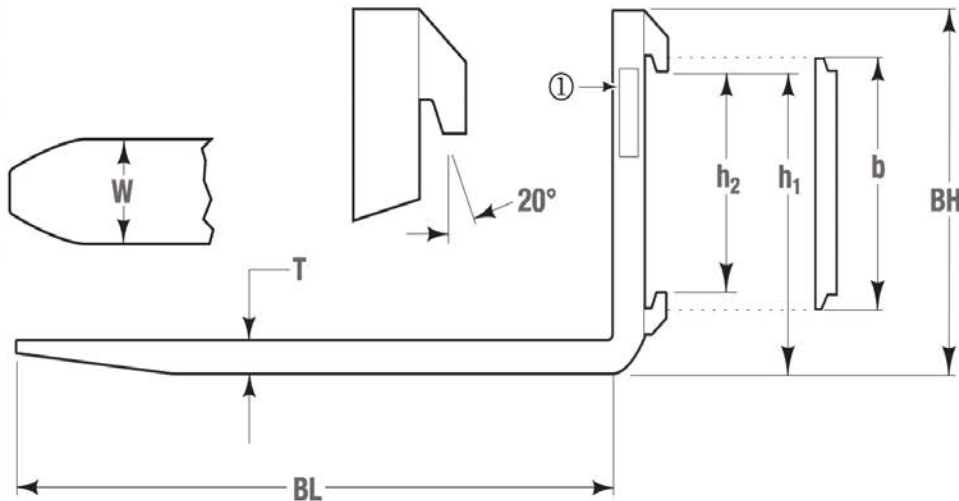
NOTE: Capacity for rotator and inverted forks, deduct 15%.

New ITA Fork Request Form

Current Supplier: _____ Current Cost: _____

b:	Dealer Name:	Phone:
h ₁ :	Contact Name:	Fax:
h ₂ :	Email:	

T:
W:
BL:
BH:



Truck Make:
Truck Model:
Truck Capacity:
Fork Capacity/Pair:
Load Center:

Mounting Class	Distance Between Hooks		Height of Carriage		Check Your Choice
	h ₂		b		
1	h ₂	12.05" 306mm	b	13.00" 331mm	
2	h ₂	15.04" 382mm	b	16.00" 407mm	
3	h ₂	18.78" 477mm	b	20.00" 508mm	
4	h ₂	23.54" 598mm	b	25.00" 635mm	
5	h ₂	26.77" 680mm	b	28.67" 728mm	

NOTES:

- ① Provide all available stamping information, check both sides of shank.
- ▶ Standard tips and tapers will be supplied, unless specific dimensions are given. Non-standard requirements MAY be more expensive.
- ▶ Standard ITA hooks and fork sizes are matched independently. Forks will always be rated to the related truck class capacity in preference to the fork cross section size. Greater lifting capacity may be achieved by requesting our HEAVY DUTY hooks, which will incur increased cost and delivery time.

New Shaft Fork Request Form

Current Supplier: _____ Current Cost: _____

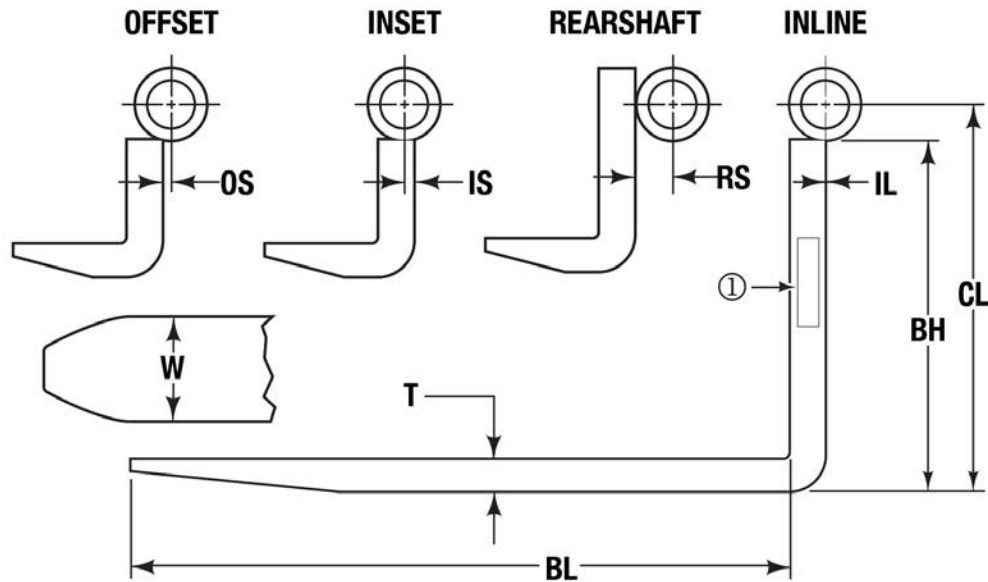
W:	Dealer Name:	Phone:
T:	Contact Name:	Fax:
BL:	Email:	

BH:
CL:

OS:
IS:
RS:
IL:

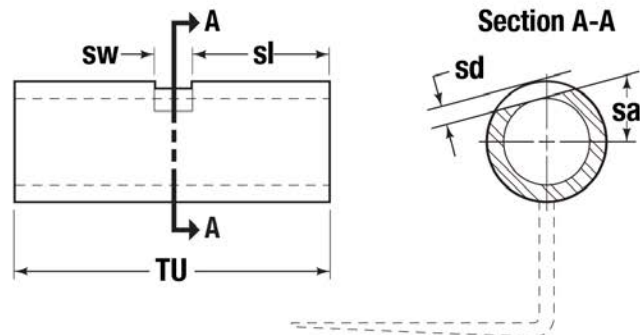
Bar Pin Diameter:
Tube In Diameter:
Tube Out Diameter:
sa°:
sd:
sl:
SW:
TU:

Truck Make:
Truck Model:
Truck Capacity:
Fork Capacity/Pair:
Load Center:



Is Tube Slotted? Yes No

If yes, show dimensions (sa to TU).



NOTES:

- ① Provide all available stamping information, check both sides of shank.
- ▶ Standard tips and tapers will be supplied, unless specific dimensions are given. Non-standard requirements MAY be more expensive.
- ▶ Tube ID will equal bar diameter plus acceptable tolerance.
- ▶ Tube OD: Excessively thin walls on the tube may require use of special tube material at extra cost.

New Bolt-On Fork Request Form

Current Supplier: _____ Current Cost: _____

W:	Dealer Name:	Phone:
T:	Contact Name:	Fax:
BL:	Email:	
BH:		

d1:
d2:
d3:
d4:

e1:
e2:
e3:
e4:

Truck Make:

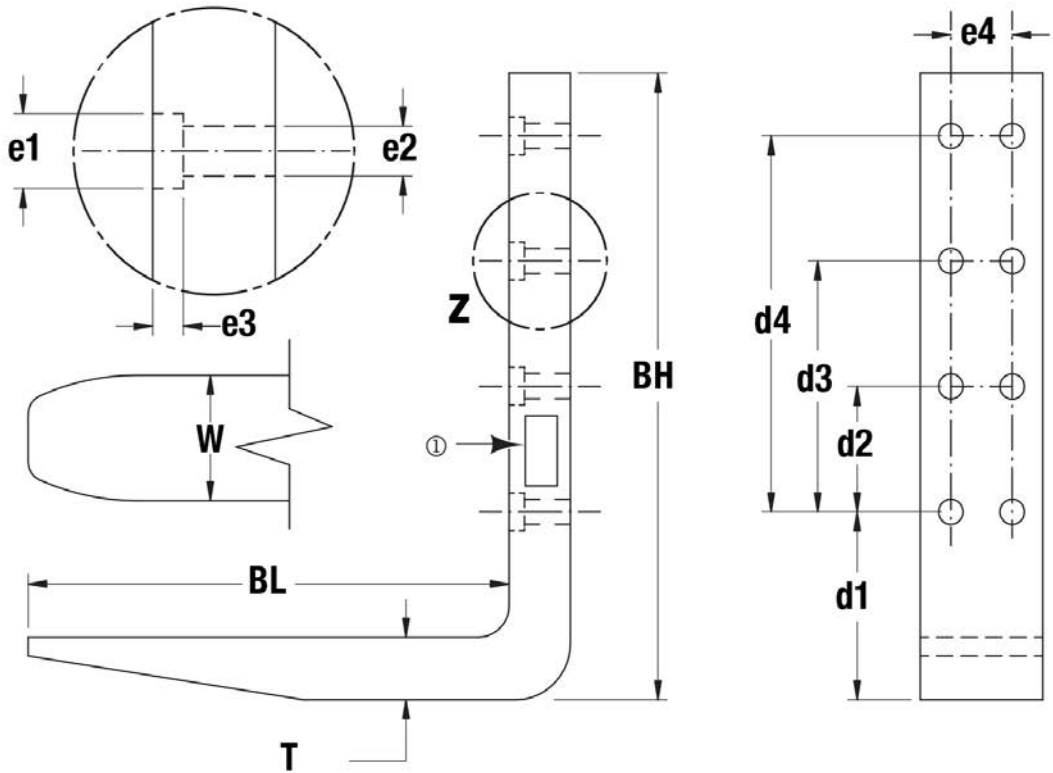
Truck Model:

Truck Capacity:

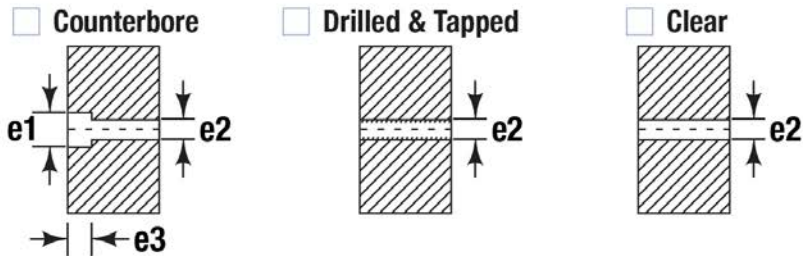
Fork Capacity/Pair:

Load Center:

DETAIL Z



Detail Z: 3 Bore/Hole type designs offered



Thread size _____

Notes:

- ① Provide all available stamping information, check both sides of shank.
- ▶ Standard tips and tapers will be supplied, unless specific dimensions are given. Non-standard requirements MAY be more expensive.

New Square Carriage Fork Request Form

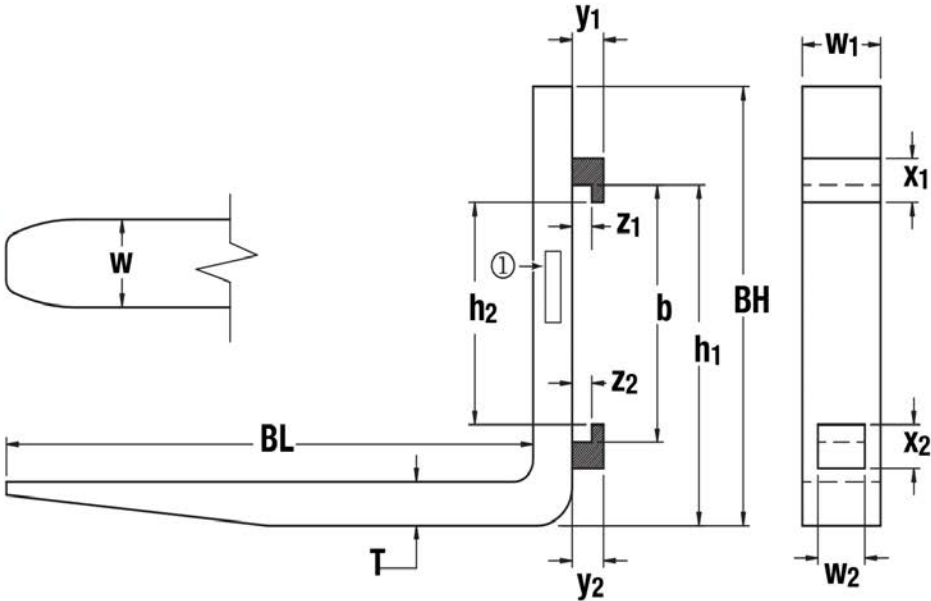
Current Supplier: _____ Current Cost: _____

W:	Dealer Name:	Phone:
T:	Contact Name:	Fax:
BL:	Email:	
BH:		

b:
h ₁ :
h ₂ :

w ₁ :
w ₂ :
x ₁ :
x ₂ :
y ₁ :
y ₂ :
z ₁ :
z ₂ :

Truck Make:
Truck Model:
Truck Capacity:
Fork Capacity/Pair:
Load Center:



Pin Kit Required? Yes No

If no, it is the user's responsibility to provide an acceptable means of fork retention.
REF: ANSI/ITSDF B56.1, 7.27.1

NOTES:

- ① Provide all available stamping information, check both sides of shank.
- ▶ Standard tips and tapers will be supplied, unless specific dimensions are given. Non-standard requirements MAY be more expensive.

JLG Industries, Inc.
1 JLG Drive
McConnellsburg, PA 17233-9533
Telephone 717-485-5161
Toll-free in US 877-JLG-LIFT
Fax 717-485-6417
www.jlg.com

An Oshkosh Corporation Company

Part No.: 401008
R0717
Printed in USA

