

H600SJP

HYBRID ARTICULATING BOOM LIFTS



KEY SPECS

Platform Height
18.40 m

Horizontal Outreach
13.54 m

Platform Capacity
230 kg

Drive Speed
4.8 km/h

KEY FEATURES

- Electric power for zero emissions and near-silent running indoors.
- Stay up and running longer with onboard charging.
- Get great access to hard-to-reach places with near-vertical jib positioning and 180-degree side-to-side movement.
- Enjoy industry leading upcycles so you can work longer with higher productivity.

ACCESSORIES & OPTIONS

- 0.76 m x 1.22 m side entry swing
- 0.76 m x 0.91 m drop bar, rear entry ****
- Tri entry 0.91 m x 1.83 m swing gate
- 13 mm air line to platform
- 8 x 6V 415 A/hr deep cycle batteries
- Four wheel drive
- All wheel assist
- On-board 3,000W Inverter
- Light package **
- Platform worklights
- Head & Tail Lights
- Plugs & Sockets
- Hostile environment package ***
- Skyline with beacon
- Cold weather package *****
- Quintolubric hydraulic oil (fire resistant)
- Synthetic Biodegradable Hydraulic Oil
- Synthetic hydraulic oil (VG 15)
- Synthetic hydraulic oil (VG 32)
- Special paint colour
- Clearsky SMART FLEET connectivity module - Subscription through On Line Express
- Acrylic console shield
- Cylinder bellows
- SkySense level 1
- SkySense level 2

* Provides indicator lights at platform control console for system distress, low fuel, tilt light, and foot switch status.

** Includes platform mounted work lights and head & tail lights.

*** Includes console cover, boom wipers and cylinder bellows.

**** Available only with drop bar type entry

***** Includes a battery blanket, hydraulic tank heater, block heater and glow plugs (diesel only).

STANDARD SPECIFICATIONS

Performance

Working Height	20.40 m
Platform Height	18.40 m
Horizontal Outreach	13.54 m
Working Outreach**	14.19 m
Swing Non-Continuous	400°
Platform Capacity - Unrestricted	230 kg
Platform Rotator (Hydraulic)	180°
Jib - Overall Length	1.24 m
Jib - Range of articulation	145° Vertical (+89° / -56°)
JibPLUS® - Range of Articulation	180° Horizontal
Machine weight *	7,807 kg
Maximum Ground Bearing Pressure	3.9 kg/cm ²
Occupied floor area	8.9 m ²
Drive Speed	4.8 km/h
Gradeability	30% (2WD)/ 45% (4WD)
Axle Oscillation	0.20 m
Turning Radius - Inside	1.23 m (2WD) / 1.22 m (4WD)
Turning Radius - Outside	4.64 m 2WD/ 4.66 4WD

Power

Diesel Engine	Kubota OC60 Air-cooled 5 kW
Electrical System	Series Hybrid
Batteries	8 x 6V 390 A/hr AGM
Drive Motors	Dual AC Electric Traction
Hydraulic Motor	Electric DC motor
Hydraulic Pump	Gear Pump

Tires

Foam Filled/Non-Marking	36/14 LL - 22.5
Brakes	Automatic Spring Applied on rear wheels

Hydraulic System

Fuel Tank Capacity	50 L
System Voltage	12V /48V
Batteries Quantity	8
Hydraulic Capacity	80 L
Auxiliary Power	12V DC

* Certain options or country standards may increase weight and/or dimensions.

** Platform outreach + 0.65 m

STANDARD FEATURES

- 0.76 m x 1.83 m side entry swing
- Multiple function operation
- Full proportional drive joystick control with integral thumb steer switch
- Full proportional main boom and swing joystick control
- Multiple speed control for lower boom, telescope and platform rotate
- Selectable creep speed on drive / lift and swing functions
- 1.24 m articulating Jib
- JibPLUS® with 4 way axis 1.24m Jib
- 180 degree powered platform rotator
- Platform console machine status light panel *
- Load sensing system
- AC power cable to platform
- On-Board diesel powered quick charge gen set
- Control ADE® (Advanced Design Electronics) System
- Brushless AC motor drive system
- Two wheel steer
- Automatic Engine Idle, Start/Stop
- Automatic Battery Charger in Hybrid Mode
- Automatic traction control
- Programmable "Personality" settings
- On-board self-diagnostic testing
- Enclosed battery / electrical compartment
- 23 amp automatic battery charger
- Automatic rear wheel brakes
- Sculptured ABS hoods
- 3 degree tilt alarm and indicator light
- 36/14LL - 22.5 foam filled -black rubber
- Oscillating front axle
- Lifting/tie down lugs
- Hour meter
- Ground control selector switch with key lock
- Battery condition indicator
- All motion alarm
- Horn
- Flashing amber beacon
- Skyline without beacon
- Skyline enhanced protection system
- Low fuel engine cut-out
- Platform tool tray
- Manual descent system

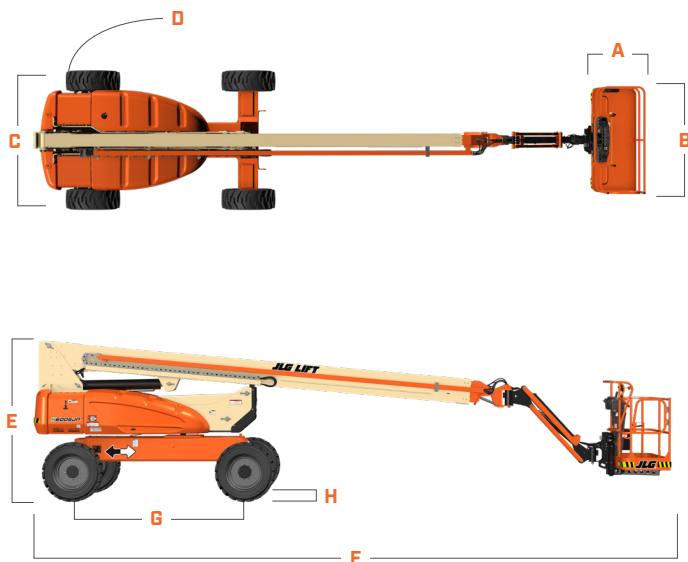
H600SJP

HYBRID ARTICULATING BOOM LIFTS



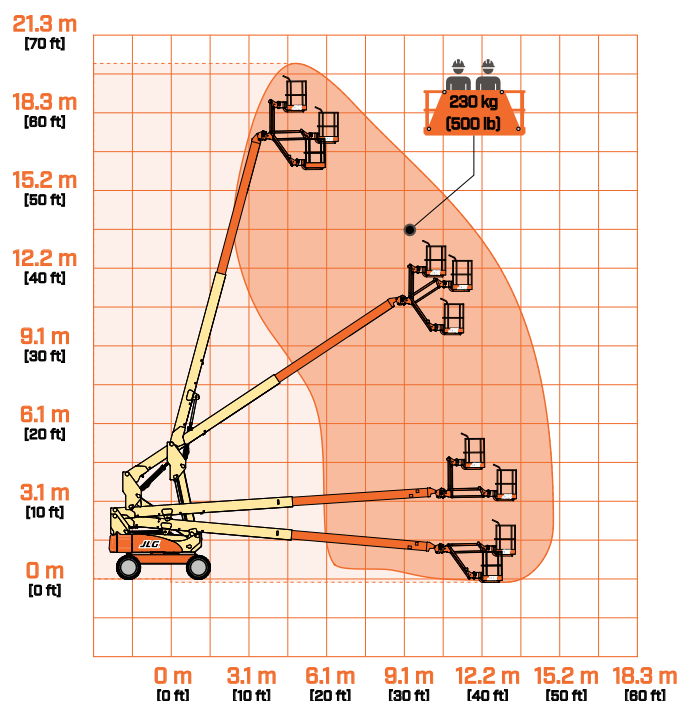
DIMENSIONS

All dimensions are approximate



A. Platform Size	0.76 m
B. Platform Size	1.83 m
C. Overall Width	2.42 m
D. Tailswing (working condition)	1.23 m
E. Stowed Height	2.54 m
F. Stowed Length	10.15 m
G. Wheelbase	2.74 m
H. Ground Clearance	0.30 m

REACH DIAGRAM



IMPORTANT

JLG is continually researching and developing products and reserves the right to make modifications without prior notice. All data in this document is indicative. Certain options or country standards will increase weight. Specifications may change to meet country standards or with the addition of optional equipment.

Due to continuous product improvements, JLG Industries reserves the right to make specification and/or equipment changes without prior notification.



JLG EMEA BV
Polaris Avenue 63
2132 JH Hoofddorp
The Netherlands
Tel.: +31 (0)23 565 5665
www.jlg.com

An Oshkosh Corporation Company