

AFTERMARKET ATTACHMENTS

COMPACT EARTHMOVING, MATERIAL HANDLING, AND UTILITY EQUIPMENT



PALLET FORK ATTACHMENTS

PART NUMBER	DESCRIPTION
70014609	FULL SIZE PALLET FORM FRAME (NO FORKS)
70014476	FULL SIZE PALLET FORK FRAME WITH 42-IN FORKS - CLASS II 4,000-LBS FORKS
70014477	FULL SIZE PALLET FORK FRAME WITH 48-IN FORKS - CLASS II 4,000-LBS FORKS
70014478	FULL SIZE PALLET FORK FRAME WITH 48-IN FORKS - CLASS II 5,500-LBS FORKS
70014479	FULL SIZE PALLET FORK FRAME WITH 54-IN FORKS - CLASS II 5,500-LBS FORKS
70014480	FULL SIZE PALLET FORK FRAME WITH 60-IN FORKS - CLASS II 5,500-LBS FORKS
70014481	FULL SIZE PALLET FORK FRAME WITH 72-IN FORKS - CLASS II 5,500-LBS FORKS
70014610	FULL SIZE WALK THRU PALLET FORK FRAME (NO FORKS)
70014482	FULL SIZE WALK THRU PALLET FORK FRAME WITH 42-IN FORKS - CLASS II 4,000-LBS FORKS
70014483	FULL SIZE WALK THRU PALLET FORK FRAME WITH 48-IN FORKS - CLASS II 4,000-LBS FORKS
70014484	FULL SIZE WALK THRU PALLET FORK FRAME WITH 48-IN FORKS - CLASS II 5,500-LBS FORKS
70014485	FULL SIZE WALK THRU PALLET FORK FRAME WITH 54-IN FORKS - CLASS II 5,500-LBS FORKS
70014486	FULL SIZE WALK THRU PALLET FORK FRAME WITH 60-IN FORKS - CLASS II 5,500-LBS FORKS
70014487	FULL SIZE WALK THRU PALLET FORK FRAME WITH 72-IN FORKS - CLASS II 5,500-LBS FORKS



70014482
WALK THRU PALLET FORK FRAME
WITH FORKS



70014476
PALLET FORK FRAME WITH FORKS

TRAILER MOVER

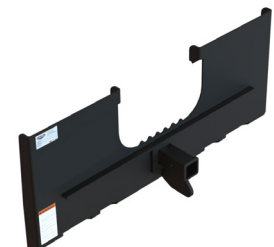
PART NUMBER	DESCRIPTION
70014488	SKID STEER TRAILER MOVER

MISCELLANEOUS ATTACHMENTS

PART NUMBER	DESCRIPTION
70014723	FORESTRY CLAW WITH HOSES AND COUPLERS
70014752	60-IN LIGHT DUTY TINE GRAPPLE
70014605	72-IN EXTENDED LIP GRAPPLE BUCKET



70014723
FORESTRY CLAW WITH HOSES AND COUPLERS



70014488
SKID STEER TRAILER MOVER

ORDER TODAY | onlineexpress.jlg.com | AllFleet@jlg.com

407002_R0526



JLG INDUSTRIES, INC.
Toll-free US 877-JLG-LIFT
JLG.com

An Oshkosh Corporation Business

AFTERMARKET ATTACHMENTS

COMPACT EARTHMOVING, MATERIAL HANDLING, AND UTILITY EQUIPMENT



BUCKETS AND ACCESSORIES

PART NUMBER	DESCRIPTION
70014515	72-IN LOW PROFILE EXTENDED LIP UTILITY BUCKET W/ HOLES
70014516	84-IN LOW PROFILE EXTENDED LIP UTILITY BUCKET W/ HOLES
70014517	66-IN HEAVY DUTY LOW PROFILE EXTENDED LIP UTILITY BUCKET W/ WELDED ON EDGE
70014518	72-IN HEAVY DUTY LOW PROFILE EXTENDED LIP UTILITY BUCKET W/ WELDED ON EDGE
70014519	78-IN HEAVY DUTY LOW PROFILE EXTENDED LIP UTILITY BUCKET W/ WELDED ON EDGE
70014520	66-IN LOW PROFILE EXTENDED LIP UTILITY BUCKET W/ BOLT ON EDGE
70014521	72-IN LOW PROFILE EXTENDED LIP UTILITY BUCKET W/ BOLT ON EDGE
70014744	78-IN LOW PROFILE EXTENDED LIP UTILITY BUCKET W/ BOLT ON EDGE
70014522	84-IN LOW PROFILE EXTENDED LIP UTILITY BUCKET W/ BOLT ON EDGE
70014523	66-IN LOW PROFILE UTILITY BUCKET W / BOLT ON TEETH
70014524	72-IN LOW PROFILE UTILITY BUCKET W / BOLT ON TEETH
70014525	66-IN LOW PROFILE EXTENDED LIP UTILITY BUCKET W/ BOLT ON TEETH
70014526	72-IN HEAVY DUTY LOW PROFILE EXTENDED LIP UTILITY BUCKET W/ BOLT ON TEETH
70014527	66-IN HEAVY DUTY LOW PROFILE UTILITY BUCKET W/ BOLT ON SIDE CUTTERS AND BOLT ON CUTTING EDGE
70014528	78-IN LOW PROFILE EXTENDED LIP UTILITY BUCKET W/ WELDED ON EDGE
70014529	84-IN HEAVY DUTY LOW PROFILE EXTENDED LIP UTILITY BUCKET W/ WELDED ON EDGE
70014530	BOLT ON SIDE CUTTERS FOR BUCKETS
70014531	66-IN BOLT ON CUTTING EDGE
70014532	72-IN BOLT ON CUTTING EDGE
70014533	78-IN BOLT ON CUTTING EDGE
70014534	84-IN BOLT ON CUTTING EDGE
70014535	REPLACEMENT BOLT ON TEETH FOR 66-IN UTILITY AND EXTENDED LIP BUCKETS
70014536	REPLACEMENT BOLT ON TEETH FOR 72-IN UTILITY AND EXTENDED LIP BUCKETS
70014537	REPLACEMENT BOLT ON TEETH FOR 78-IN UTILITY AND EXTENDED LIP BUCKETS
70014538	REPLACEMENT BOLT ON TEETH FOR 84-IN UTILITY AND EXTENDED LIP BUCKETS
70014562	SPILL GUARD FOR 66-IN AND 72-IN BUCKETS
70014563	SPILL GUARD FOR 78-IN AND 84-IN BUCKETS



70014527
66-IN HEAVY DUTY LOW PROFILE UTILITY BUCKET W/ BOLT ON SIDE CUTTERS AND BOLT ON CUTTING EDGE



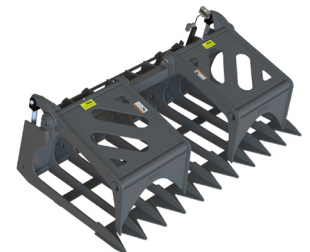
70014529
84-IN HEAVY DUTY LOW PROFILE EXTENDED LIP UTILITY BUCKET W/ WELDED ON EDGE



70014562
SPILL GUARD FOR 66-IN AND 72-IN BUCKETS

MEDIUM DUTY GRAPPLES

PART NUMBER	DESCRIPTION
70014512	66-IN MEDIUM DUTY GRAPPLE W/ HOSES & COUPLERS
70014513	72-IN MEDIUM DUTY GRAPPLE W/ HOSES & COUPLERS
70014514	78-IN MEDIUM DUTY GRAPPLE W/ HOSES & COUPLERS



70014512
66-IN MEDIUM DUTY GRAPPLE

ORDER TODAY | onlineexpress.jlg.com | AllFleet@jlg.com

407002_R0526



JLG INDUSTRIES, INC.
Toll-free US 877-JLG-LIFT
JLG.com

An Oshkosh Corporation Business

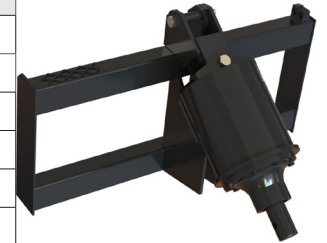
AFTERMARKET ATTACHMENTS

COMPACT EARTHMOVING, MATERIAL HANDLING, AND UTILITY EQUIPMENT



AUGER COMPONENTS

	PART NUMBER	DESCRIPTION
AUGER DRIVE UNITS	70014510	SKID STEER AUGER PLANETARY DRIVE UNIT W/MOUNT, HOSES AND COUPLERS
	70014511	SKID STEER AUGER CHAIN DRIVE UNIT W/MOUNT, HOSES AND COUPLERS
ROUND DRIVE BITS	70014505	2 9/16-IN ROUND 12-IN AUGER BIT
	70014506	2 9/16-IN ROUND 24-IN AUGER BIT
	70014507	2 9/16-IN ROUND 36-IN AUGER BIT
	70014508	2 9/16-IN ROUND 9-IN AUGER BIT
	70014509	2 9/16-IN ROUND 18-IN AUGER BIT
	70014606	2 9/16-IN ROUND 15-IN AUGER BIT
	70014607	2 9/16-IN ROUND 30-IN AUGER BIT
HEX DRIVE BITS	70014745	9-IN AUGER BIT, 2-IN HEX DRIVE
	70014746	12-IN AUGER BIT, 2-IN HEX DRIVE
	70014747	15-IN AUGER BIT, 2-IN HEX DRIVE
	70014748	18-IN AUGER BIT, 2-IN HEX DRIVE
	70014749	24-IN AUGER BIT, 2-IN HEX DRIVE
	70014750	30-IN AUGER BIT, 2-IN HEX DRIVE
	70014751	36-IN AUGER BIT, 2-IN HEX DRIVE
EXTENSIONS	70014564	2 9/16-IN ROUND 14-IN EXTENSION
	70014565	2 9/16-IN ROUND 24-IN EXTENSION
	70014566	2 9/16-IN ROUND 36-IN EXTENSION
	70014567	2 9/16-IN ROUND 48-IN EXTENSION
	70014568	2 9/16-IN ROUND 60-IN EXTENSION
	70014569	2-IN HEX TOP 14-IN EXTENSION
	70014570	2-IN HEX TOP 24-IN EXTENSION
	70014571	2-IN HEX TOP 36-IN EXTENSION
	70014572	2-IN HEX TOP 48-IN EXTENSION
	70014573	2-IN HEX TOP 60-IN EXTENSION
	70014587	2.5-IN HEX TOP 14-IN EXTENSION
	70014588	2.5-IN HEX TOP 24-IN EXTENSION
	70014589	2.5-IN HEX TOP 36-IN EXTENSION
	70014590	2.5-IN HEX TOP 48-IN EXTENSION
70014591	2.5-IN HEX TOP 60-IN EXTENSION	
ADAPTERS	70014574	ROUND TO HEX ADAPTER
	70014575	HEX TO ROUND ADAPTER
REPLACEMENT PARTS	70014592	HEAT TREATED CENTER POINT, SQUARE MOUNT (INCLUDES NUT & BOLT)
	70014593	FORGED AUGER TOOTH
	70014594	BOLT & NUT COMBINATION FOR STANDARD AUGER TEETH
	70014595	PACKAGE OF FORGED AUGER TOOTH AND BOLT & NUT COMBO FOR STANDARD AUGER TEETH



70014510 SKID STEER/MINI EX AUGER PLANETARY DRIVE UNIT



70014505 12-IN ROUND AUGER BIT



70014506 24-IN ROUND AUGER BIT

ORDER TODAY | onlineexpress.jlg.com | AllFleet@jlg.com

407002_R0526



JLG INDUSTRIES, INC.
Toll-free US 877-JLG-LIFT
JLG.com

An Oshkosh Corporation Business

AFTERMARKET ATTACHMENTS

COMPACT EARTHMOVING, MATERIAL HANDLING, AND UTILITY EQUIPMENT



SKID STEER FRONT HOE ATTACHMENT AND OPTIONS

PART NUMBER	DESCRIPTION
70014489	OPTIBOOM MAX W/QUICK ATTACH
70014490	THUMB FOR OPTIBOOM MAX
70014491	9-IN TOOTH BUCKET W/BOLT ON TEETH
70014492	9-IN TOOTH BUCKET W/WELD ON TEETH
70014493	12-IN TOOTH BUCKET W/BOLT ON TEETH
70014494	12-IN TOOTH BUCKET W/WELD ON TEETH
70014495	18-IN TOOTH BUCKET W/BOLT ON TEETH
70014496	18-IN TOOTH BUCKET W/WELD ON TEETH
70014497	36-IN DITCHING BUCKET
70014498	42-IN DITCHING BUCKET
70014499	36-IN SKELETON BUCKET
70014500	42-IN SKELETON BUCKET
70014501	35-IN RAKE
70014502	SINGLE CLEVIS LIFT
70014503	SPREADER BAR LIFT
70014504	4 PT. LIFT ATTACHMENT



70014489
OPTIBOOM MAX W/QUICK ATTACH



70014490
THUMB FOR OPTIBOOM MAX



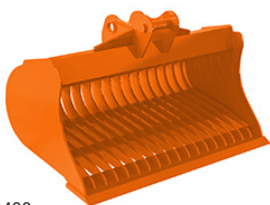
70014491
9-IN TOOTH BUCKET W/BOLT ON TEETH



70014497
36-IN DITCHING BUCKET



70014502
SINGLE CLEVIS LIFT



70014499
36-IN SKELETON BUCKET



70014504
4 PT. LIFT ATTACHMENT



70014501
35-IN RAKE



70014503
SPREADER BAR LIFT

ORDER TODAY | onlineexpress.jlg.com | AllFleet@jlg.com

407002_R0526



JLG INDUSTRIES, INC.
Toll-free US 877-JLG-LIFT
JLG.com

An Oshkosh Corporation Business

AFTERMARKET ATTACHMENTS

COMPACT EARTHMOVING, MATERIAL HANDLING, AND UTILITY EQUIPMENT



MINI PALLET FORK ATTACHMENTS

PART NUMBER	DESCRIPTION
70014608	MINI PALLET FORK FRAME (NO FORKS)
70014539	MINI PALLET FORK FRAME WITH CLASS 1 36-IN FORKS
70014540	MINI PALLET FORK FRAME WITH CLASS 1 42-IN FORKS
70014541	MINI PALLET FORK FRAME WITH CLASS 1 48-IN FORKS



70014539
MINI PALLET FORK FRAME WITH CLASS 1
36-IN FORKS

MINI TRAILER MOVER

PART NUMBER	DESCRIPTION
70014542	MINI TRAILER MOVER



70014542
MINI TRAILER MOVER

MINI BUCKETS AND ACCESSORIES

PART NUMBER	DESCRIPTION
70014543	36-IN MINI LOW PRO BUCKET
70014544	42-IN MINI LOW PRO BUCKET
70014545	48-IN MINI LOW PRO BUCKET
70014546	54-IN MINI LOW PRO BUCKET
70014547	36-IN MINI LOW PRO BUCKET W/ TEETH
70014548	42-IN MINI LOW PRO BUCKET W/ TEETH
70014549	48-IN MINI LOW PRO BUCKET W/ TEETH
70014550	54-IN MINI LOW PRO BUCKET W/ TEETH
70014551	48-IN MINI SNOW AND LIGHT MATERIAL BUCKET
70014552	54-IN MINI SNOW AND LIGHT MATERIAL BUCKET
70014553	60-IN MINI SNOW AND LIGHT MATERIAL BUCKET
70014672	36-IN MINI BOLT ON CUTTING EDGE
70014673	42-IN MINI BOLT ON CUTTING EDGE
70014674	48-IN MINI BOLT ON CUTTING EDGE
70014675	54-IN MINI BOLT ON CUTTING EDGE
70014676	60-IN MINI BOLT ON CUTTING EDGE



70014546
36-IN MINI LOW PRO BUCKET W/ TEETH

MINI GRAPPLES

PART NUMBER	DESCRIPTION
70014554	36-IN MINI GRAPPLE (TINE) BUCKET W/ HOSES & COUPLERS
70014555	42-IN MINI GRAPPLE (TINE) BUCKET W/ HOSES & COUPLERS
70014556	48-IN MINI GRAPPLE (TINE) BUCKET W/ HOSES & COUPLERS
70014557	36-IN MINI GRAPPLE (SMOOTH BOTTOM) BUCKET W/ HOSES & COUPLERS
70014558	42-IN MINI GRAPPLE (SMOOTH BOTTOM) BUCKET W/ HOSES & COUPLERS
70014559	48-IN MINI GRAPPLE (SMOOTH BOTTOM) BUCKET W/ HOSES & COUPLERS
70014560	48-IN MINI ROOT RAKE GRAPPLE W/ HOSES & COUPLERS
70014561	56-IN MINI ROOT RAKE GRAPPLE W/ HOSES & COUPLERS



70014554
36-IN MINI GRAPPLE BUCKET

ORDER TODAY | onlineexpress.jlg.com | AllFleet@jlg.com

407002_R0526



JLG INDUSTRIES, INC.
Toll-free US 877-JLG-LIFT
JLG.com

An Oshkosh Corporation Business