



ACCESSORIES & OPTIONS

- Air Conditioning
- Air Shut Off Valve
- Arctic Package
- Auxiliary Electrics
- Boom Brushes
- Boom Prop
- Brick Guards
- Dual Auxiliary Hydraulics
- Fenders
- Hydraulic Coupler
- Multi-Function Display with Reversing Camera
- Multiple Seat Options
- Platform Docking Station
- Remote Boom Control
- Reverse Sensing System
- Reversing Fan
- Ride Control & Boom Float
- Road Lights
- Roof Wiper
- Seatbelt Engagement & Operator Presence
- SmartLoad Technology
- White Noise Back-up Alarm
- Work Lights

ATTACHMENTS

Standard Carriage	60-in 72-in 87-in	1.5-m 1.8-m 2.2-m
Dual Fork Positioning Carriage Side-Shift Carriage with Dual Fork Positioning Pallet Forks	72-in 2.36-in x 6-in x 48-in 2.36-in x 6-in x 60-in 2.36-in x 6-in x 72-in 2.36-in x 6-in x 96-in	1.8-m 60-mm x 152-mm x 1.2-m 60-mm x 152-mm x 1.5-m 60-mm x 152-mm x 1.8-m 60-mm x 152-mm x 2.4-m
General Purpose Bucket	94-in, 2.6-cu yd	2.38-m, 198-m ³
Light Material Bucket	94-in, 5.2-cu yd	2.38-m, 3.97-m ³
Multipurpose 4-in-1 Bucket	94-in, 1.3-cu yd	2.38-m, 0.99-m ³
Multipurpose 4-in-1 Bucket Grapple Bucket	94-in, 2.6-cu yd 94-in, 1.7-cu yd 94-in, 2.6-cu yd	2.38-m, 1.98-m ³ 2.38-m, 1.29-m ³ 2.38-m, 1.98-m ³
Fork-Mounted Work Platform	8-ft, 1,000-lb Capacity	2.4-m, 455-kg Capacity
Material Handling Arm	15,650-lb Capacity	7,598-kg
Hook, Coupler Mounted	16,750-lb Capacity	7,598-kg
Winch, Coupler Mounted	8,000-lb Capacity	3,629-kg
Pipe Grapple	96-in, 8,000-lb Capacity	2.4-m, 3,629-kg
Log Handler	80-in, 8,000-lb Capacity	2.03-m, 3,629-kg
Steel Coil Handler	16,750-lb Capacity	7,598-kg
Lifting Hook, Fork-Mounted	15,000-lb Capacity	6,804-kg Capacity
Extendable Truss, Fork-Mounted	8,000-lb Capacity	3,629-kg Capacity
Tire Handler	7,000-lb Capacity	3,175-kg

STANDARD SPECIFICATIONS

Performance

Rated Capacity	16,755-lb / 7,600-kg
Maximum Lift Height	31-ft 8-in / 9.65-m
Load at Max Height	9,900-lb / 4,491-kg
Maximum Forward Reach	18-ft 7-in / 5.66-m
Load at Max Reach	5,500-lb / 2,495-kg
Frame Leveling	8 Degrees
Lift Speed (boom retracted) Up	14.1 seconds
Lift Speed (boom retracted) Down	10.9 seconds
Boom Speed - Extend	13.2 seconds
Boom Speed - Retract	10.9 seconds
Top Travel Speed (4-Speed)	20 mph / 32 kph
Drawbar Pull (loaded)	23,000-lb / 102-kN
Outside Turning Radius	13-ft 2-in / 4.01-m
Operating Weight	31,145-lb / 14,127-kg

Engine

Make and Model	Deutz TCD 3.6L
No. of Cylinders	4
Displacement	220-cu in / 3.6 L
Gross Power Basic	134 hp / 100 kW
Maximum Torque @ 1500 rpm	369-lb/ft / 500 Nm
Fuel Tank Capacity	39 gal / 148 L

Transmission

Hydrostatic 2-speed.

Axles

Trunnion mounted planetary 45° steer axles. Integral steer cylinder. High bias limited slip differential on front axle.

Brakes

Service brakes are inboard wet disc brake on front and rear axles and include inching. Parking brakes are wet disc spring applied hydraulic release on front axle.

Tires

Standard	17.5-25 SGG
Optional	Foam-Filled, Pneumatic Radial

Cab

- Adjustable seat
- Anti-theft
- Certified ROPS/FOPS structure
- Clearsky Smart Fleet Hardware (CS550)
- Enclosed cab
- Horn
- LED motion/amber beacon (CS550)
- Retractable sunscreen
- Single joystick controls
- Tilt & auxiliary hydraulics on joystick
- Tilt steering column

Steering 4-Wheel

Hydraulic power steering.

Operator selectable 4-wheel circle, 4-wheel crab, 2-wheel front.

Instruments

- DEF gauge
- Engine oil pressure gauge
- Fuel gauge
- Hour meter
- Temperature gauge
- Volt meter

Hydraulic System-Implement

Capacity 77 gal / 292 L

Load sense piston pump. Auxiliary hydraulics used for all attachments equipped with cylinders or other hydraulic components.

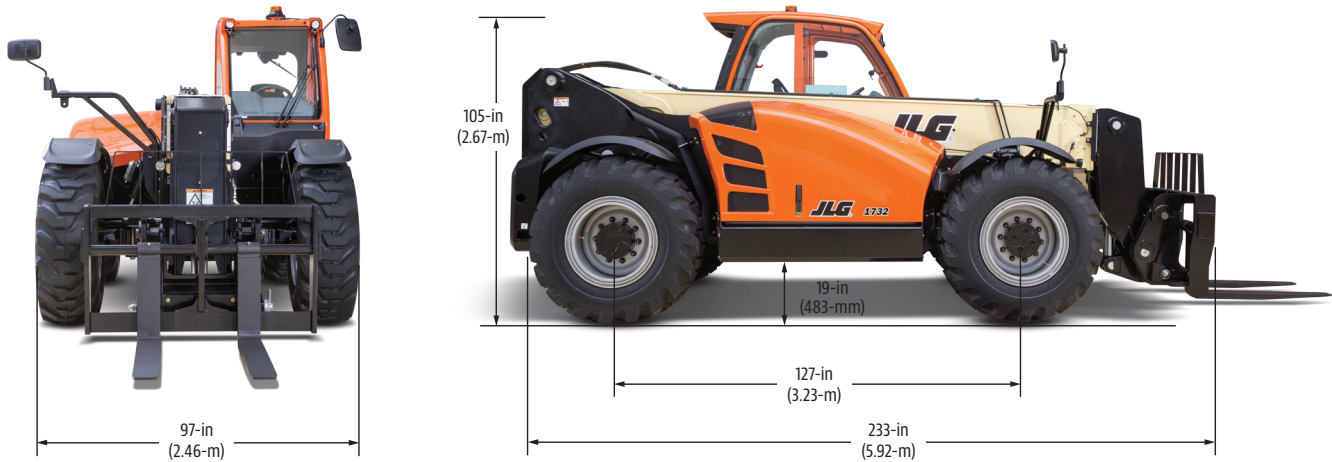
1732

TELEHANDLER

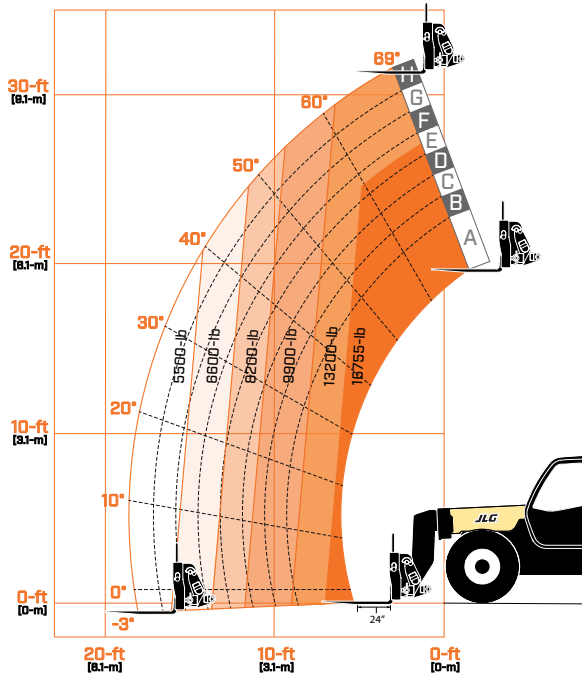


DIMENSIONS

All dimensions are approximate



LOAD CHART



We provide coverage for one (1) full year on the entire machine, two (2) full years or 2,000 hours on the drivetrain and cover all specified major structural components for five (5) years. Due to continuous product improvements, we reserve the right to make specification and/or equipment changes without prior notification.



JLG INDUSTRIES, INC.
Toll-free US 877-JLG-LIFT
JLG.com

An Oshkosh Corporation Business