

TELEHANDLER BASICS

What You Need to Know Before Buying or Renting a Telehandler



ARE A TELEHANDLER AND A FORKLIFT THE SAME THING?

OSHA identifies 7 classes of forklifts. A telehandler is a Class VII forklift. The biggest difference between telehandlers and other forklifts is the **TELEHANDLER'S TELESCOPING BOOM.**

Class I Electric Motor Rider Trucks

Class II Electric Motor Narrow Aisle Trucks

Class III Electric Motor Hand Trucks or Hand/Rider Trucks

Class IV Internal Combustion Engine Trucks (Solid/Cushion Tires)

Class V Internal Combustion Engine Trucks (Pneumatic Tires)

Class VI Electric & Internal Combustion Engine Tractors

CLASS VII ROUGH TERRAIN FORKLIFT TRUCKS

WHAT ARE THE BENEFITS OF USING A TELEHANDLER?

Telehandlers are versatile machines that lift, carry and place materials.



CAPACITY RANGE
UP TO 12,000+ LB

ENHANCED TERRAINABILITY
3 STEERING MODES

INCREASED LIFT HEIGHT
UP TO 70+ FT

GREATER HORIZONTAL REACH
UP TO 60+ FT

MORE VERSATILITY
WIDE RANGE OF ATTACHMENTS

WHAT IS A TELEHANDLER ATTACHMENT?

Telehandler attachments can be switched out depending on your application, so you get many machines in one.

COMMON ATTACHMENTS

Some of the most common attachments are buckets, carriages, forks and lifting hooks. There are different types of attachments in each of these categories.



BUCKETS



CARRIAGES



FORKS



LIFTING HOOKS

JOB-SPECIFIC ATTACHMENTS

Many telehandler manufacturers also offer highly specialized attachments, like the ones below. These are designed to complete more specific tasks on the job site.



TIRE HANDLER



PIPE GRAPPLE



SHEET MATERIAL HANDLER

WHAT IS A TELEHANDLER USED FOR?



General, Commercial & Industrial Construction

Application Uses

- Placing blocks precisely at greater heights
- Handling bulky items, like pipes, trusses and beams
- Moving heavy, palletized loads of masonry and sheet material
- Completing steel erection and framing

Recommended Telehandler Attachments

- Pipe grapple
- Sheet material handler
- Lifting hooks
- Forks and carriages (standard, swing, etc.)

Residential Construction

Application Uses

- Roofing
- Setting trusses
- Placing roofing material
- Handling sheet material

Recommended Telehandler Attachments

- Truss booms
- Forks and carriages (standard, swing, etc.)
- Material handling arm



Energy Industry Construction & Maintenance

Application Uses

- Tackling heavy pick-and-carry applications
- Moving materials farther distances
- Completing equipment maintenance

Recommended Telehandler Attachments

- Forks and carriages (standard, swing, etc.)
- Tire handler
- Pipe grapple



Landscaping

Application Uses

- Moving pallets of materials, like fertilizer, pavers and bricks
- Transporting loads of mulch, stones and soil
- Loading and unloading materials from a flatbed or other truck

Recommended Telehandler Attachments

- Material buckets
- Forks and carriages (standard, swing, etc.)



Agriculture & Farming

Application Uses

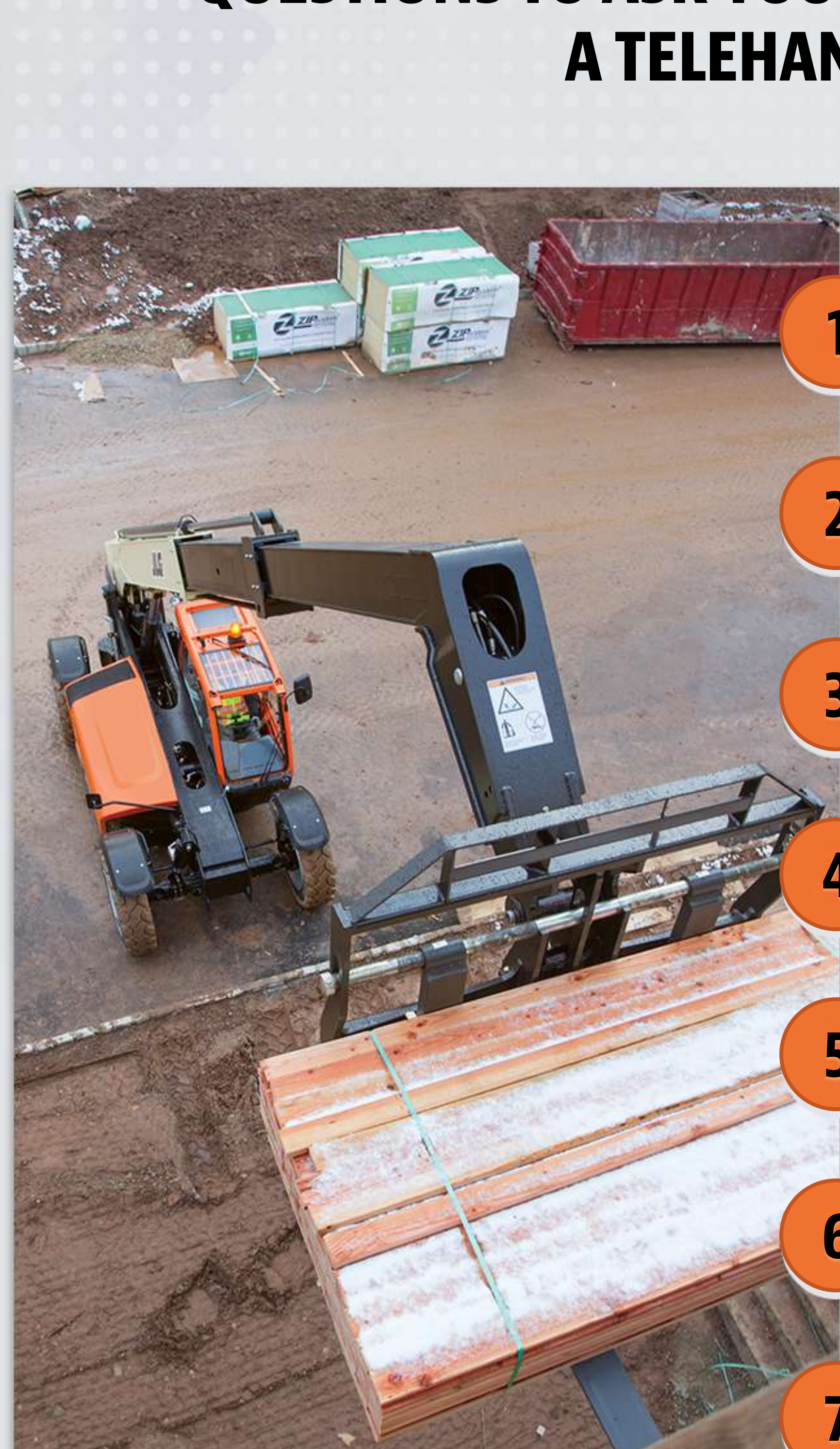
- Moving and stacking hay bales
- Handling silage
- Completing general farm maintenance

Recommended Telehandler Attachments

- Bale clamps and spears
- Grapple bucket
- Material buckets



QUESTIONS TO ASK YOURSELF BEFORE CONTACTING A TELEHANDLER DEALER



- 1 How much do I need to lift?
- 2 How high do I need to place material?
- 3 How far do I need to reach?
- 4 How compact is my job site?
- 5 What type of tires are needed for my application?
- 6 What type of engine do I need?
- 7 What specific attachments will help me tackle the jobs to be done?

Learn more about selecting the right type of telehandler for your job:

jlg.com/find-my-telehandler

