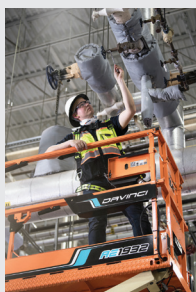


# ACCESSORIZED!

*Add On These JLG® Accessories  
to Increase Job Site Productivity*



**JLG**®



Machine add-ons can increase an operator's productivity with JLG® scissor lifts and boom lifts, providing additional safety measures and/or extending a machine's efficiency in certain applications, like welding, electrical work, plumbing and maintenance work. For example, some JLG accessories are designed to conserve platform space, while others improve job site working conditions and enhance the equipment operators' ability to get overhead work done.

When selecting accessories to outfit a JLG scissor lift or boom lift, the top considerations are the type of work and the location where the work will be performed.

In this whitepaper, we'll outline:

1. **Available accessories for scissor lifts**
2. **Available accessories for boom lifts**
3. **Buying Options for JLG accessories and more**

### ACCESSORIES FOR SCISSOR LIFTS

Because scissor lifts are used to perform a wide range of tasks, operators have realized the usefulness of add-ons in aerial workspaces. The range of options for scissor lifts has expanded to include accessories available a la carte or as packages for specific applications or conditions, such as cold weather, welding, electrical work, plumbing and maintenance. For example, JLG offers pipe racks (aka pipe cradles) as a stand-alone option but also as part of an accessory bundle, like the plant maintenance package.

Below are summaries of the "extras" available for JLG scissor lifts and how these tools can help operators work at height.

#### Platform Extensions

When working at height with a scissor lift, operators often need to access areas above or beyond where the machine's standard platform allows them to reach. At one time, platform (aka deck) extensions were only offered as an option on scissor lifts. But because the additional workspace and up-and-over reach made them such a popular add-on, today JLG offers this feature standard.

That said, work at height often requires scissor lift operators to access extremely tight, hard-to-reach spaces, like between drop ceiling tiles and joists, ductwork, pipes and other existing overhead infrastructure that obstructs the work area. But often the size of a scissor lift's platform is greater than these areas, which leaves operators with few choices to fully reach the work area and safely complete the work that needs to be done. Using ladders, buckets, planks or the platform's guardrails to stand on to gain extra reach is strictly prohibited by ANSI standards and OSHA safety regulations. So what other options do operators have?





This real-world job site challenge led JLG to create a unique solution that allows operators to modify the platform space. The QuikAccess Platform lets operators fold down most of the rails to form a smaller "L" shape platform, allowing the operator to raise the machine higher for better overhead access. This option keeps the operator narrowly enclosed and protected by full-height rails that meet ANSI A92 requirements. This type of accessory is primarily needed by electricians and plumbers for working around pipes and in tight areas during HVAC installations.

#### *Pipe Racks (pipe cradles)*

This type of accessory enables operators to store materials, like conduit and pipes, on the outside of the platform, freeing up the workspace inside the platform while keeping tools and materials organized and within reach.



#### *Panel Carriers*

A panel carrier accessory allows operators to load drywall, plywood or sheetrock panels outside the scissor lift's rails in a carrier tray. This can be a real asset for drywallers and panel installers to more easily transfer the panels to the elevated or overhead installation site.



#### *Vises*

A bench vise is a factory-approved, rail-mounted tool that offers scissor lift operators a convenient and safe method to securely hold the material as they work with it.

#### *Platform Power*

Generator sets, inverters (to convert DC power to AC power) and airlines provide power on the platform when there is none available on-site. This gives operators the ability to run hand tools, like drills or saws, while working at height.



#### *Welders*

Onboard welders, like the JLG SkyPower® with SkyWelder® package, offer operators a self-contained wire-feed welder that eliminates the need to move bulky tanks or cumbersome weld leads. The leads are integrated into the scissor lift, and the scissor lift's batteries power the welder. With this accessory, operators won't have welding leads draped over the railings, which can create safety concerns.

#### *Tool Trays and Workstations*

Add-on tool trays and workstations help scissor lift operators optimize their platform space with extra compartments for commonly used job site tools, like reciprocating saws, drills or circular saws. These accessories also have compartments for keeping boxes of connectors, hangers or other fasteners within reach and off of the floor. They also may feature a pull-out tray that provides a flat working surface near the top of the platform rails.



#### *Packaged Accessories*

JLG also offers optional packages, or bundles, when more than one accessory may be needed to complete work at height. For example, an electrician's package is great for applications that require battery-powered tools. It combines multiple accessories designed to keep operators' tools within reach and off the platform's floor, such as a stowable workbench and





molded pockets that provide ample storage within reach of tools or fasteners, while leaving the workspace open to help prevent tripping hazards.

A plumber's package offers operators everything they need to get plumbing work done more efficiently, including manufacturer-approved pipe racks that provide positive retention of materials outside of the platform, reducing rail damage and optimizing platform space. The maintenance package combines popular elements of the electrician's package and the plumber's package, including pipe racks, vise and welder, to get work done around industrial plans or building facilities.



### *Operator Enhancement Accessories*

Extra lighting options, such as flood lamps and flashing beacons, can promote a safe working environment for both the operators in the platform and the crew on the ground. Flood lamps, for example, illuminate darkened areas with minimal access to natural light. Flashing beacons can visually let bystanders know when the machine is moving or in operation.

And, object detection systems like JLG's optional SkySense® sensors can alert scissor lift operators if they are nearing an obstruction during machine operation, increasing the protection of people and property.



### *Ground-Level Accessories*

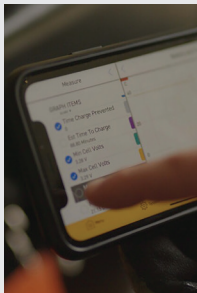
JLG also offers options to accessorize the machine at ground level, including on its chassis. For example, leveling jacks or outriggers provide stability solutions for scissor lifts working on uneven surfaces. Alternative technology add-ons, like auto-level systems, also can offer greater efficiency when operating in rough terrain.



Advancements in variable-tilt, quick-leveling and self-leveling technologies are also available. These types of innovations allow operators to adjust a machine's capability, under certain conditions, to the ground or surface being worked on. An example of this is JLG's optional QuikLevel Advanced system, which automatically levels the scissor lift on a side slope up to 4.5 degrees while allowing the operator to drive fully elevated on constant terrain.



Different tire sizes and treads are available to make sure a scissor lift can be used in certain applications, like solid, non-marking tires for indoor applications or work on concrete slabs, or non-solid, foam-filled lug patterns or high flotation tires for outdoor use on undeveloped sites.



There are multiple types of batteries available for scissor lifts: FLA (flooded-lead acid), AGM (absorbed glass mat), Nickel-metal hydride and Lithium-ion. The most common ones are FLA and Lithium-ion. In addition to the many battery options, a variety of battery chargers are available for JLG scissor lifts. For example, JLG has optional high-capacity chargers and standard chargers.

And speaking of batteries, optional battery monitoring systems are also available for scissor lifts. It's not unheard of for machine batteries to die during the workday, causing a huge efficiency problem. Knowing how much charge is remaining in a machine's battery pack and what can be done with it can drastically improve the machine's productivity. To address this, JLG offers advanced battery monitoring capabilities on its products. JLG's technology, for example, is sophisticated enough to analyze the machine's battery charge and share information, via a mobile app, on battery usage and diagnostic information on the battery and charger system.



Leak containment systems, like the JLG CleanGuard™ accessory, feature custom-fit trays that capture leaks and drips from the power unit of electric scissor lifts. This add-on replaces the need to cover the entire underside of the machine with a diaper. In the case of JLG's option, CleanGuard does not interfere with the operation or general servicing of the machine, and it blends in with the aesthetics of the machine.



Cold-weather accessory packages include a battery blanket, hydraulic tank heater, block heater and glow plugs (diesel only), allowing scissor lifts to operate more effectively in below-freezing conditions.

### ACCESSORIES FOR BOOM LIFTS

Boom lifts are designed to tackle overhead work in high locations, sometimes up to 185 ft or more, thanks to their extensive reach. Below are short summaries of some of the different options available and insights into how these tools can increase productivity when working at height.

#### *Power in the Platform*

Generator sets, welders, cutters and airlines provide power to the platform when there is none available on-site. For example, the JLG SkyPower® generator system delivers the power needed to conveniently operate other JLG accessories. With the SkyPower system, operators get a 7,500W generator with a power cable to the platform. This generator system can be added to provide power for other JLG accessories, including the SkyWelder® package.



As part of the SkyPower system, the JLG SkyWelder package includes a 280-amp Miller CSTTM 280 welder that conserves space and provides stick and TIG capabilities. It is engineered to eliminate welding leads hanging over the rails and eliminates the unnecessary cost of having a stand-alone welder and power supply.





### Platform Additions

Mesh kits for boom lifts, available in half (to the mid rail) and full (to the top rail) options, available in aluminum or fabric, help keep the materials and tools operators are using inside the platform, preventing dropped objects from falling from aerial worksites.

When the work-at-height requires users to exit the boom lift's platform, fall arrest options, like platforms and bolt-on solutions, allow workers to leave the platform and perform their work without detaching the safety lanyard. This gives them the ability to work 6-ft beyond the platform while remaining attached to the platform at all times. These systems are ideal for a variety of applications, including aircraft inspection, maintenance and service, roof installation or repair, chimney repair, bridge construction, petrochemical plant construction, inspection maintenance and repair, steel erection, as well as general construction and maintenance. Both of JLG's fall arrest solutions meet ANSI A92 and CSA B354 standards and are available on all new JLG boom lifts, as well as an aftermarket accessory.

Add-on tool trays help operators optimize their platform space with extra compartments for commonly used job site tools, like power tools, and personal items, like mobile devices. USB charging ports are available on many boom lifts.

### Storage Outside the Platform

Accessories like pipe racks (pipe cradles), which keep conduit and pipes in place outside of the platform, and panel carriers, like JLG's SkyGlazier® package, which enables operators to load drywall, glass, plywood or sheetrock panels outside the boom lift's rails in a carrier tray can be real assets for drywallers and panel installers to transfer the panels to the elevated or overhead installation site. This can be a real asset for drywallers and panel installers to transfer the panels to the elevated or overhead installation site.

Both of these types of accessories free up the workspace inside the platform while keeping tools and materials organized and within reach.

### Accessories for Working in Every Condition

Different tire sizes and treads are available to make sure a boom lift can be used in certain applications, like solid, non-marking tires for indoor applications or work on concrete slabs, or non-solid or foam-lug patterns and high flotation tires for outdoor use on undeveloped sites. Specialty sand and turf tire options are also available for work in sensitive ground conditions.



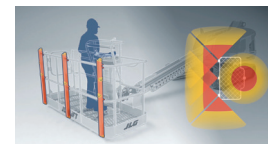
And, when it is challenging to choose between tires or tracks, JLG offers Quad Tracks as an alternative solution: The ability to convert a normal, wheeled JLG boom lift into a highly capable, tracked machine. The tracks bolt directly to the boom lift's standard wheel hubs, offering an increase in machine utilization and flexibility for working on a range of surfaces, like sand, mud, gravel, grass, and paved streets with curbs, potholes and sharp transitions. This interchangeable tire/track option allows operators to cover a wide range of applications on multiple job sites with one machine.



Extra lighting options, such as flood lamps, can promote a better working environment for both the operators in the platform and the crew on the ground. Flood lamps, for example, illuminate darkened areas with minimal natural light. With the JLG lighting packages, extra lamps illuminate the work site.

Working year-round is an option when a boom lift is equipped with cold weather or arctic packages, enabling these machines to operate more effectively in below-freezing conditions.

And, object detection systems like JLG's SkySense option can alert boom lift operators if they are nearing an obstruction during machine operation, increasing the protection of people and property.



#### HOW TO GET ACCESSORIZED

When a crew needs to get work done at height, a JLG scissor lift or boom lift equipped with the right accessories can be one of the most effective tools to help them get the job done. Some accessories can come factory-installed on new machines or upfitted to existing equipment in the field, adding flexibility for operators to be able to productively use multiple models within an equipment fleet.

Are you interested in buying accessories for your JLG machine?

On new machine orders, customers should consult with a JLG sales representative to discuss options. To find the nearest sales provider, visit [jlg.com/en/sales-service-locator](http://jlg.com/en/sales-service-locator).

For aftermarket purchases, JLG's Online Express is fully stocked with JLG accessories that are designed to optimize your aerial equipment fleet's productivity. For your convenience, it's open for business around the clock. And, the site's functionality focuses on usability and findability, including being able to search for parts and accessories by serial number, description or part number via mobile, tablet and desktop devices to provide you with a quick, convenient purchasing experience.



**JLG INDUSTRIES, INC.**  
Toll-free US 877-JLG-LIFT  
[JLG.com](http://JLG.com)

An Oshkosh Corporation Company

[Subscribe To Direct Access](#)