



KEY SPECS

Platform Height
13.72 m

Up and Over Height
7.70 m

Horizontal Outreach
7.24 m

Platform Capacity
230 kg

KEY FEATURES

- Achieve maximum maneuverability by moving over uneven surfaces with Automatic Traction Control.
- Achieve optimum productivity with longer duty cycles.
- Produces zero emissions, 100% environmentally friendly.
- Enhanced up and over access with jib.

ACCESSORIES & OPTIONS

- 0.76 m x 1.22 m low mount platform swing gate
- 0.76 m x 0.91 m low mount platform, rear entry **
- 13 mm air line to platform
- 240/55 - 17.5 foam filled tires -black rubber
- Platform worklights
- Head and tail lights
- Plugs & Sockets
- Programmable Security Lock
- Synthetic Biodegradable Hydraulic Oil
- Acrylic console shield
- Cylinder bellows
- Skyline with beacon
- Beacon red colour

* Provides indicator lights at platform control console for system distress, low battery, tilt light, and foot switch status.
** Available only with drop bar type entry

STANDARD SPECIFICATIONS

Performance

| | |
|----------------------------------|------------------------|
| Working Height | 15.72 m |
| Platform Height | 13.72 m |
| Horizontal Outreach | 7.24 m |
| Working Outreach*** | 7.89 m |
| Up and Over Height | 7.70 m |
| Swing (non-continuous) | 360° |
| Platform Capacity – Unrestricted | 230 kg |
| Platform Rotator (Hydraulic) | 180° |
| Jib - Overall Length | 1.24 m |
| Jib - Range of articulation | 144° (+84°/ -60°) |
| Machine weight * | 6,670 kg |
| Maximum Ground Bearing Pressure | 5.3 kg/cm ² |
| Drive Speed | 5.2 km/h |
| Gradeability | 30% |
| Turning Radius - Inside | 0.61 m |
| Turning Radius - Outside | 3.15 m |

* Certain options or country standards may increase weight and/or dimensions.
** Horizontal outreach + 0.65 m

Power Source

| | |
|-------------------|---------------------|
| Electrical System | 48 V DC |
| Batteries | 8 x 6V 370 A/hr AGM |
| Drive Motors | Dual AC Traction |

Tires

| | |
|-------------|--------------------------|
| Foam Filled | Non marking |
| Brakes | Automatic Spring Applied |

Hydraulic System

| | |
|------------------|-------------------|
| Hydraulic Motor | DC Electric motor |
| Hydraulic Pump | Gear Pump |
| Hydraulic System | 20 L |

STANDARD FEATURES

- 0.76 m x 1.52 m low mount platform swing gate
- Multiple function operation
- Full proportional drive joystick control with integral thumb steer switch
- Full proportional main boom and swing joystick control
- Multiple speed control for lower boom, telescope and platform rotate
- Selectable creep speed on drive / lift and swing functions
- 1.22 m articulating jib
- 180 degree powered platform rotator
- Platform console machine status light panel *
- Load sensing system
- AC power cable to platform
- Two Wheel Direct Electric Drive with AC motors
- 8 x 6V 370 A/hr AGM Batteries
- 8 x 6V 370 A/hr deep cycle batteries
- Automatic traction control
- Programmable "Personality" settings
- On-board self-diagnostic testing
- Enclosed battery / electrical compartment
- 20 amp automatic battery charger
- Automatic rear wheel brakes
- 3 degree tilt alarm and indicator light
- Non mark solid rubber tires
- 240/55 - 17.5 non marking foam filled tires
- Lifting/tie down lugs
- Ground control selector switch with key lock
- Battery condition indicator
- Hour meter
- Horn
- 305 A/hr maintenance free AGM batteries in lieu of standard
- All motion alarm
- Amber strobe light
- Skyline active enhanced protection system
- Skyline without beacon
- Platform tool tray
- Manual descent system
- Clearsky SMART FLEET connectivity module - Subscription through On Line Express

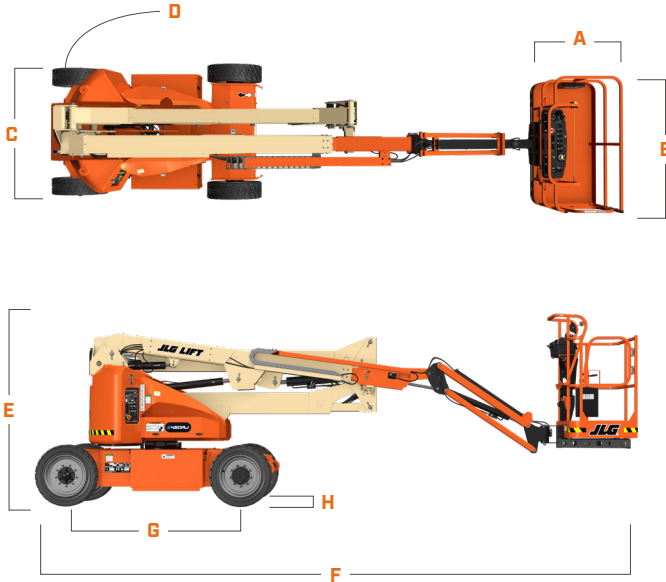
E450AJ

ELECTRIC BOOM



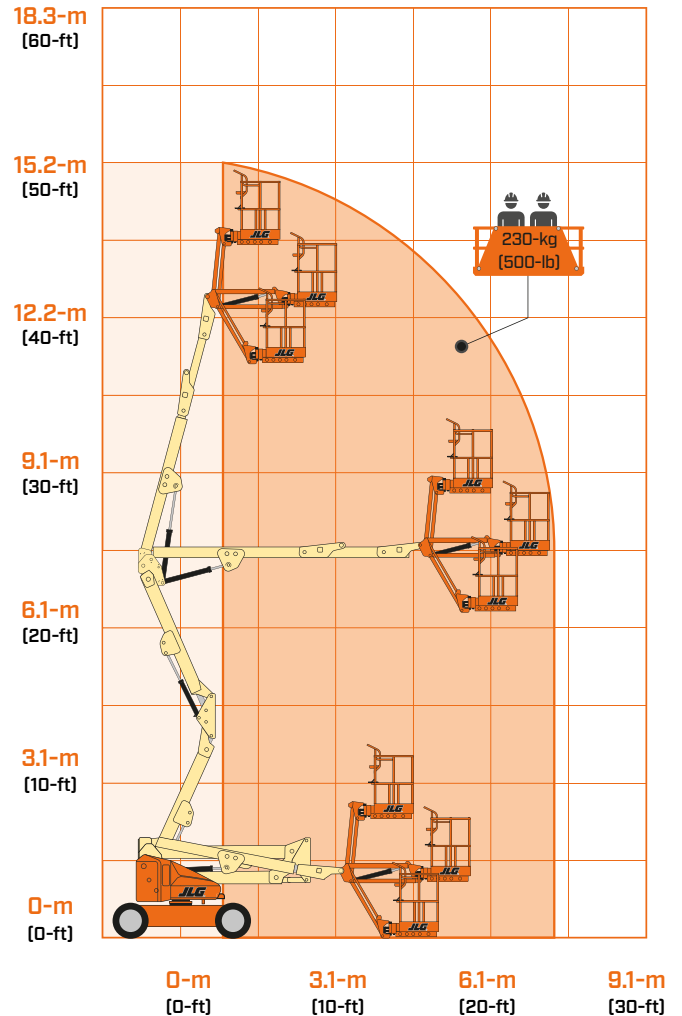
DIMENSIONS

All dimensions are approximate



| | |
|----------------------------------|--------|
| A. Platform Width | 0.76 m |
| B. Platform Length | 1.52 m |
| C. Overall Width | 1.75 m |
| D. Tailswing (working condition) | Zero |
| E. Stowed Height | 2.01 m |
| F. Stowed Length | 6.45 m |
| G. Wheelbase | 2.01 m |
| H. Ground Clearance | 0.20 m |

REACH DIAGRAM



IMPORTANT

JLG is continually researching and developing products and reserves the right to make modifications without prior notice. All data in this document is indicative. Certain options or country standards will increase weight. Specifications may change to meet country standards or with the addition of optional equipment.

Due to continuous product improvements, JLG Industries reserves the right to make specification and/or equipment changes without prior notification.



JLG EMEA BV
 Polaris Avenue 63
 2132 JH Hoofddorp
 The Netherlands
 Tel.: +31 (0)23 565 5665
www.jlg.com

An Oshkosh Corporation Company