

8042

TELEHANDLER

SKYTRAK®

Performance

Rated Capacity	8,000 lb	3,629 kg
Maximum Lift Height	41 ft 11 in.	12.8 m
Load at Max Height	6,000 lb	2,722 kg
Maximum Forward Reach	26 ft 7 in.	8.10 m
Load at Max Reach	2,200 lb	998 kg
Frame Leveling	10°	
Lift Speed (boom retracted)		
Up	15 sec	
Down	13 sec	
Boom Speed		
Extended	16.5 sec	
Retracted	14.2 sec	
Top Travel Speed (4-Speed)	19 mph	31 kph
Drawbar Pull (loaded)	25,000 lb	111 kN
Outside Turning Radius	13 ft	4.0 m
Operating Weight	27,100 lb	12,242 kg

Standard Specifications

Engine

Make and Model	Cummins QSF3.8L Tier 4 F	
No. of Cylinders	4	
Displacement	229 cu in.	3.8 L
Gross Power Basic	110 hp	82 kW
Maximum Torque @ 1500 rpm	348 lb-ft	472 Nm
Fuel Tank Capacity	35 gal	132.5 L

Transmission

Powershift.
4-speed forward and 3-speed reverse.

Axles

Full-time planetary 4-wheel drive.
Oscillating rear axle with Stabil-Trak system.

Brakes

Hydraulically actuated inboard wet disc brakes.
Emergency brake with transmission declutch feature.

Tires

Standard	370/75-28
Optional	Foam-Filled or Solid

Cab

Certified ROPS/FOPS structure.	Single joystick controls.
Adjustible suspension seat with retractable seat belt.	Integrated arm rest.
	Rear view mirrors.

Steering 4-Wheel

Power steering.
Operator selectable 4-wheel circle, 4-wheel crab, 2-wheel front.

Instruments

- | | |
|---------------------|-----------------------------|
| • Hourmeter | • Engine Oil Pressure Gauge |
| • Voltmeter | • DEF Gauge |
| • Temperature Gauge | • Fuel Gauge |



Hydraulic System-Implement

Capacity	45.5 gal	172.2 L
----------	----------	---------

Piston pump.
Variable flow, load sensitive hydraulic system.
Load holding valves on frame level, stabilizer, attachment tilt, extend and lift cylinders.
Auxiliary hydraulics used for all attachments equipped with cylinders or other hydraulic components. Consists of valves, controls and hydraulic lines.

Accessories & Options

- | | |
|--------------------|-------------------------------------|
| • Enclosed Cab | • Rotating Beacon |
| • Work Lights | • Fenders |
| • Road Lights | • Reverse Sensing System |
| • Air Conditioning | • 74 hp (55 kW) Tier 4 Final Engine |

Attachments

Standard Carriage	50 in.	1.3 m
	60 in.	1.5 m
	72 in.	1.8 m
Side-Tilt Carriage	50 in.	1.3 m
	60 in.	1.5 m
	72 in.	1.8 m
Swing 90° Carriage	72 in.	1.8 m
	50 in.	1.3 m
Side-Shift Carriage	50 in.	1.3 m
Dual Fork Positioning Carriage	50 in.	1.3 m
Tower	8 ft (2.4 m); 50 in. (1.3 m) Standard Carriage	
Pallet Forks	2.36 in. x 4 in. x 48 in.	60 mm x 102 mm x 1.2 m
	2.36 in. x 5 in. x 48 in.	60 mm x 127 mm x 1.2 m
	2.00 in. x 6 in. x 72 in.	51 mm x 152 mm x 1.8 m
Lumber Forks	2.00 in. x 7 in. x 60 in.	51 mm x 178 mm x 1.5 m
	2.36 in. x 6 in. x 60 in.	60 mm x 152 mm x 1.5 m
	2 in. x 2 in. x 48 in.	51 mm x 51 mm x 1.2 m
Cubing Forks	90 in.	2.3 m
Fork Extensions	72 in., 1.0 cu yd	1.8 m, 0.76 m³
	96 in., 1.5 cu yd	2.4 m, 1.15 m³
	102 in., 2.0 cu yd	2.6 m, 1.53 m³
Material Bucket	96 in., 1.75 cu yd	2.4 m, 1.34 m³
	12 ft, 2,000 lb	3.7 m, 907 kg
	15 ft, 2,000 lb	4.6 m, 907 kg
Grapple Bucket	12 ft with winch, 2,000 lb	3.7 m, 907 kg
	Truss Boom	
Fork Mounted Work Platform	8 ft, 1,000 lb Capacity	2.4 m, 455 kg Capacity
Lifting Hook, Fork Mounted		
Material Handling Arm	4,000 lb Capacity	1,814 kg Capacity
	72 in., 1.9 cu yd	1.8 m, 1.5 m³
Trash Hopper	2,000 lb Capacity	907 kg Capacity

8042

TELEHANDLER

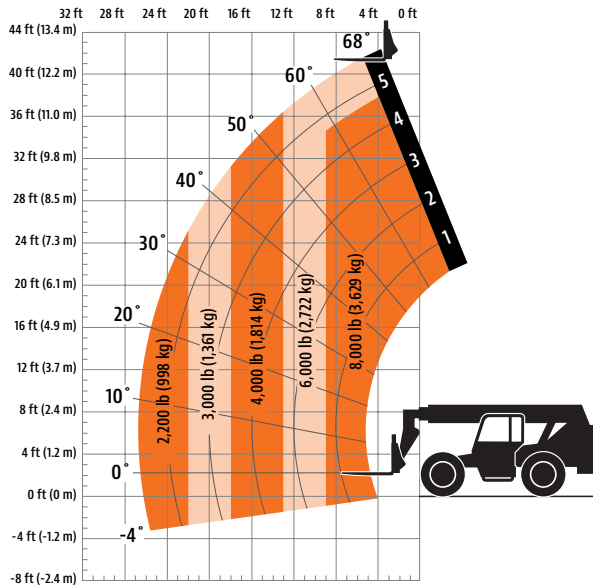
SKYTRAK®

Dimensions

All dimensions are approximate.



Load Chart



The JLG "1, 2 & 5" Warranty

We provide coverage for one (1) full year on the entire machine, two (2) full years or 2,000 hours on the drivetrain and cover all specified major structural components for five (5) years. Due to continuous product improvements, we reserve the right to make specification and/or equipment changes without prior notification.

Part No.: 3132400
R011811
Printed in USA



JLG Industries, Inc.
1 JLG Drive
McCconnellsburg, PA 17233-9533
Telephone 717-485-5161
Toll-free in US 877-JLG-LIFT
Fax 717-485-6417
www.jlg.com

An Oshkosh Corporation Company