

6036

TELEHANDLER

SKYTRAK

Performance

Rated Capacity	2,722 kg	6,000 lb
Maximum Lift Height	11.0 m	36 ft 1 in.
Load at Max Height	2,722 kg	6,000 lb
Maximum Forward Reach	6.8 m	22 ft 4 in.
Load at Max Reach	816 kg	1,800 lb
Frame Leveling	10°	
Lift Speed (boom retracted)		
Up	11.5 sec	
Down	9 sec	
Boom Speed		
Extended	13.5 sec	
Retracted	14 sec	
Top Travel Speed (4-Speed)	31 kph	19 mph
Drawbar Pull (loaded)	98 kN	22,000 lb
Outside Turning Radius	4.19 m	165 in.
Operating Weight	9,662 kg	21,300 lb

Standard Specifications

Engine

Make and Model	Cummins QSF3.8L	
No. of Cylinders	4	
Displacement	3.8 L	229 cu in.
Gross Power Basic	63 kW	85 hp
Maximum Torque @ 1400 rpm	461 Nm	340 lb-ft
Fuel Tank Capacity	132.5 L	35 gal

Transmission

Powershift.
4-speed forward and 3-speed reverse.

Axles

Full-time planetary 4-wheel drive.
Oscillating rear axle with Stabil-Trak system.

Brakes

Hydraulically actuated inboard wet disc brakes.
Emergency brake with transmission declutch feature.

Tires

Standard	370/75-28
Optional	Foam-Filled or Solid

Cab

Certified ROPS/FOPS structure	Rear view mirrors
Adjustable suspension seat with retractable seat belt	Single joystick controls Integrated arm rest

Steering 4-Wheel

Power steering.
Operator selectable 4-wheel circle, 4-wheel crab, 2-wheel front.

Instruments

- Voltmeter
- Hourmeter
- Engine oil pressure gauge
- Temperature gauge
- Fuel gauge



Hydraulic System-Implement

Capacity	172.2 L	45.5 gal
----------	---------	----------

Gear Pump

Variable flow, load sensitive hydraulic system.

Load holding valves on frame level, stabilizer, attachment tilt, extend and lift cylinders.

Auxiliary hydraulics used for all attachments equipped with cylinders or other hydraulic components. Consists of valves, controls and hydraulic lines.

Accessories & Options

- Enclosed Cab
- Work Lights
- Road Lights
- Rotating Beacon
- Fenders
- Reverse Sensing System
- Air Conditioning

Attachments

Standard Carriage	1.3 m	50 in.
	1.5 m	60 in.
	1.8 m	72 in.
Side-Tilt Carriage	1.3 m	50 in.
	1.5 m	60 in.
	1.8 m	72 in.
Swing 90° Carriage	1.8 m	72 in.
Side-Shift Carriage	1.3 m	50 in.
Dual Fork Positioning Carriage	1.3 m	50 in.
Tower Pallet Forks	2.4 m (8 ft); 1.3 m (50 in.)	Standard Carriage
	60 mm x 102 mm x 1.2 m	2.36 in. x 4 in. x 48 in.
	60 mm x 127 mm x 1.2 m	2.36 in. x 5 in. x 48 in.
Lumber Forks	51 mm x 152 mm x 1.8 m	2.00 in. x 6 in. x 72 in.
	51 mm x 178 mm x 1.5 m	2 in. x 7 in. x 60 in.
	60 mm x 152 mm x 1.5 m	2.36 in. x 6 in. x 60 in.
Cubing Forks	51 mm x 51 mm x 1.2 m	2 in. x 2 in. x 48 in.
Fork Extensions	2.3 m	90 in.
Material Bucket	1.8 m, 0.76 m³	72 in., 1.0 cu yd
	2.4 m, 1.15 m³	96 in., 1.5 cu yd
	2.6 m, 1.53 m³	102 in., 2.0 cu yd
	2.4 m, 1.34 m³	96 in., 1.75 cu yd
Grapple Bucket	3.7 m, 907 kg	12 ft, 2,000 lb
	4.6 m, 907 kg	15 ft, 2,000 lb
	3.7 m, 907 kg	12 ft with winch, 2,000 lb
Truss Boom	2.4 m, 455 kg Capacity	8 ft, 1,000 lb Capacity
Fork Mounted Work Platform		
Lifting Hook, Fork Mounted		
Material Handling Arm	1,814 kg Capacity	4,000 lb Capacity
Trash Hopper	1.8 m, 1.5 m³	72 in., 1.9 cu yd
	907 kg Capacity	2,000 lb Capacity

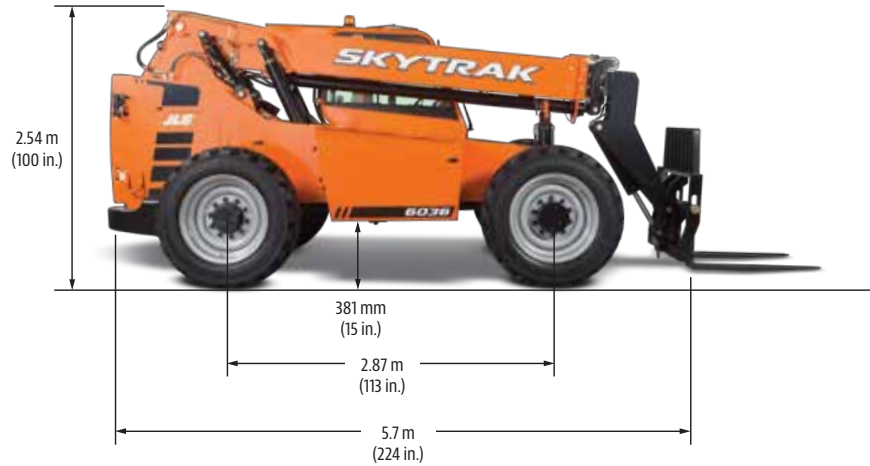
6036

TELEHANDLER

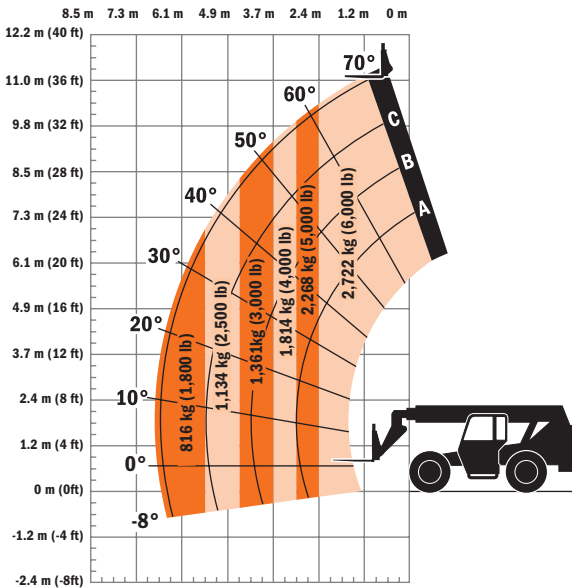
SKYTRAK

Dimensions

All dimensions are approximate.



Load Chart



The JLG "1 & 5" Warranty

JLG Industries, Inc. backs its products with its exclusive "1 & 5" Warranty. We provide coverage on all products for one (1) full year, and cover all specified major structural components for five (5) years. Due to continuous product improvements, we reserve the right to make specification and/or equipment changes without prior notification. This machine meets or exceeds applicable OSHA Regulations in 29 CFR 1910.67, 29 CFR 1926.453, ANSI A92.5-2006, and CSA Standard CAN3-B354.2-M82, as originally manufactured for intended applications.

Part No.: 3132403LA
0915
Printed in USA

JLG Industries, Inc.
1 JLG Drive
McConnellsburg, PA 17233-9533
Telephone 717-485-5161
Toll-free in US 877-JLG-LIFT
Fax 717-485-6417
www.jlg.com

An Oshkosh Corporation Company