

10054

TELEHANDLER

SKYTRAK



Performance

Rated Capacity	4,536 kg	10,000 lb
Maximum Lift Height	16.2 m	53 ft 2 in.
Load at Max Height	1,814 kg	4,000 lb
Maximum Forward Reach	11.8 m	38 ft 9 in.
Load at Max Reach	1,361 kg	3,000 lb
Frame Leveling	10°	
Lift Speed (boom retracted)		
Up	16.4 sec	
Down	14.7 sec	
Boom Speed		
Extended	17.6 sec	
Retracted	15.9 sec	
Top Travel Speed (4-Speed)	32 kph	20 mph
Drawbar Pull (loaded)	109 kN	24,500 lb
Outside Turning Radius	4.19 m	165 in.
Operating Weight	12,791 kg	28,200 lb

Standard Specifications

Engine

Make and Model	Cummins QSF3.8L	
No. of Cylinders	4	
Displacement	3.8 L	229 cu in.
Gross Power Basic	82 kW	110 hp
Maximum Torque @ 1500 rpm	472 Nm	348 lb-ft
Fuel Tank Capacity	132.5 L	35 gal

Transmission

Powershift.
4-speed forward and 3-speed reverse.

Axles

Full-time planetary 4-wheel drive.
Oscillating rear axle with Stabil-Trak system.

Brakes

Hydraulically actuated inboard wet disc brakes.
Emergency brake with transmission declutch feature.

Tires

Standard	400/75-28
Optional	Foam-Filled or Solid

Cab

Certified ROPS/FOPS structure.
Adjustable suspension seat with retractable seat belt.
Single joystick controls.
Integrated arm rest.
Rear view mirrors.

Steering 4-Wheel

Power steering.
Operator selectable 4-wheel circle, 4-wheel crab, 2-wheel front.

Instruments

- Hourmeter
- Voltmeter
- Temperature Gauge
- Engine Oil Pressure Gauge
- Fuel Gauge

Hydraulic System-Implement

Capacity	196.8 L	52 gal
Piston pump.		

Variable flow, load sensitive hydraulic system.

Load holding valves on frame level, stabilizer, attachment tilt, extend and lift cylinders.
Auxiliary hydraulics used for all attachments equipped with cylinders or other hydraulic components. Consists of valves, controls and hydraulic lines.

Accessories & Options

- Enclosed Cab
- Work Lights
- Road Lights
- Air Conditioning
- Rotating Beacon
- Fenders
- Reverse Sensing System

Attachments

Standard Carriage	1.3 m 1.5 m 1.8 m	50 in. 60 in. 72 in.
Side-Tilt Carriage	1.3 m 1.5 m 1.8 m	50 in. 60 in. 72 in.
Swing 90° Carriage	1.8 m	72 in.
Side Shift Carriage	1.3 m	50 in.
Dual Fork Positioning Carriage	1.3 m	50 in.
Tower Pallet Forks	2.4 m (8 ft); 1.3 m (50 in.)	Standard Carriage
	60 mm x 102 mm x 1.2 m	2.36 in. x 4 in. x 48 in.
	60 mm x 127 mm x 1.2 m	2.36 in. x 5 in. x 48 in.
	51 mm x 152 mm x 1.8 m	2.00 in. x 6 in. x 72 in.
Lumber Forks	51 mm x 178 mm x 1.5 m 60 mm x 152 mm x 1.5 m	2.00 in. x 7 in. x 60 in. 2.36 in. x 6 in. x 60 in.
Cubing Forks	51 mm x 51 mm x 1.2 m	2 in. x 2 in. x 48 in.
Fork Extensions	2.3 m	90 in.
Material Bucket	1.8 m, 0.76 m³ 2.4 m, 1.15 m³ 2.6 m, 1.53 m³	72 in., 1.0 cu yd 96 in., 1.5 cu yd 102 in., 2.0 cu yd
Grapple Bucket	2.4 m, 1.34 m³	96 in., 1.75 cu yd
Truss Boom	3.7 m, 907 kg 4.6 m, 907 kg 3.7 m, 907 kg	12 ft, 2,000 lb 15 ft, 2,000 lb 12 ft with winch, 2,000 lb
Fork Mounted Work Platform	2.4 m, 455 kg Capacity	8 ft, 1,000 lb Capacity
Lifting Hook, Fork Mounted		
Material Handling Arm	1,814 kg Capacity	4,000 lb Capacity
Trash Hopper	1.8 m, 1.5 m³ 907 kg Capacity	72 in, 1.9 cu yd 2,000 lb Capacity
Pipe Grapple	1.8 m, 907 kg Capacity	72 in, 2,000 Capacity

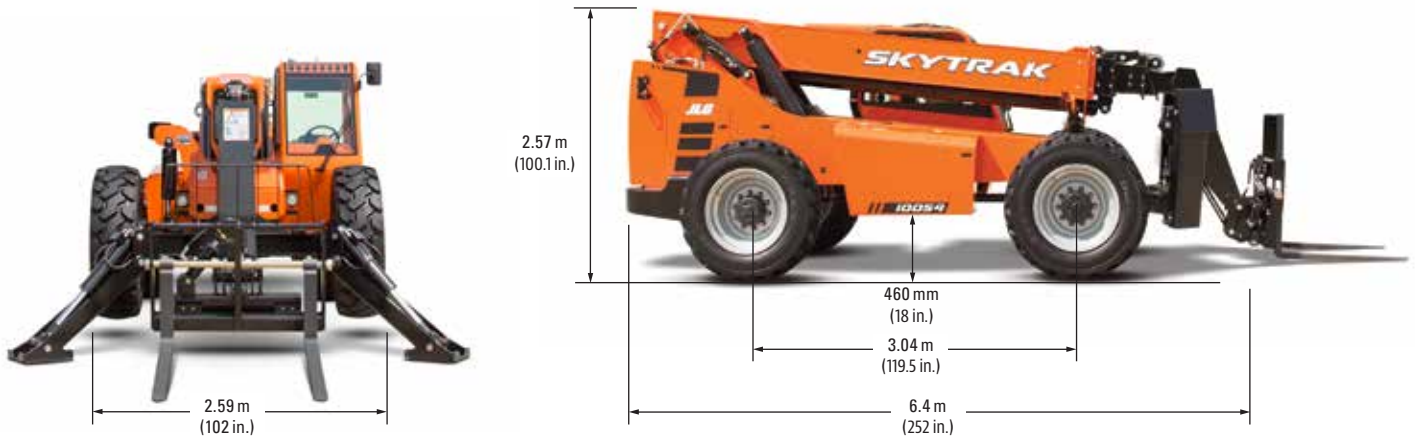
10054

TELEHANDLER

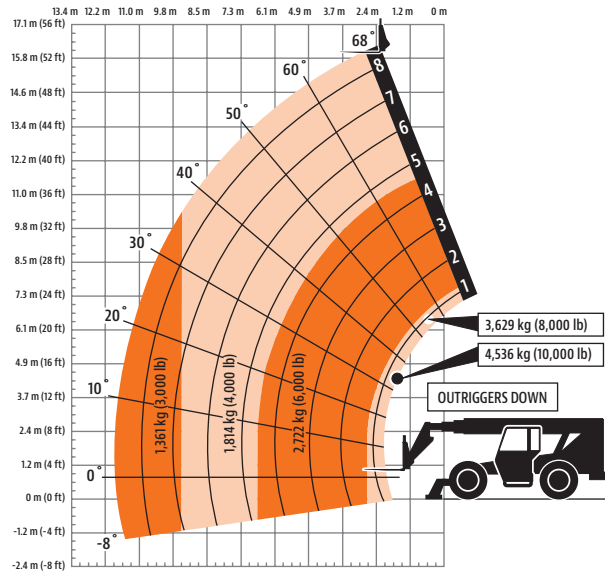
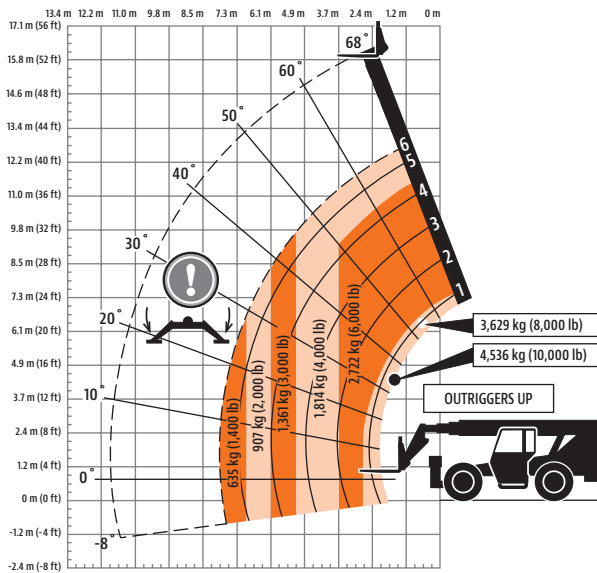
SKYTRAK

Dimensions

All dimensions are approximate.



Load Chart



The JLG "1 & 5" Warranty

JLG Industries, Inc. backs its products with its exclusive "1 & 5" Warranty. We provide coverage on all products for one (1) full year, and cover all specified major structural components for five (5) years. Due to continuous product improvements, we reserve the right to make specification and/or equipment changes without prior notification. This machine meets or exceeds applicable OSHA Regulations in 29 CFR 1910.67, 29 CFR 1926.453, ANSI A92.5-2006, and CSA Standard CAN3-B354.2-M82, as originally manufactured for intended applications.

Part No.: 3132404LA
0915
Printed in USA

JLG Industries, Inc.
1 JLG Drive
McCconnellsburg, PA 17233-9533
Telephone 717-485-5161
Toll-free in US 877-JLG-LIFT
Fax 717-485-6417
www.jlg.com

An Oshkosh Corporation Company