

JLG Mobile Analyzer

GENUINE JLG PARTS



The new JLG Mobile Analyzer is a Wi-Fi-enabled evolution of the handheld Analyzer Kit, allowing technicians to do the same analysis they are currently doing with the handheld kit. However, this new tool for Apple and Google operating system devices, allows for an extended operating range of up to 150 feet. JLG continues to introduce new technologies that help our customers perform their jobs more efficiently a key priority at JLG. This application will provide JLG customers additional flexibility on the job.

The wireless module plugs into a port on a JLG machine, and the application receives and displays a detailed diagnostic read-out. The JLG Mobile Analyzer is ideal for use in inclement weather, enabling technicians to work from a truck or under protective cover.

FEATURES

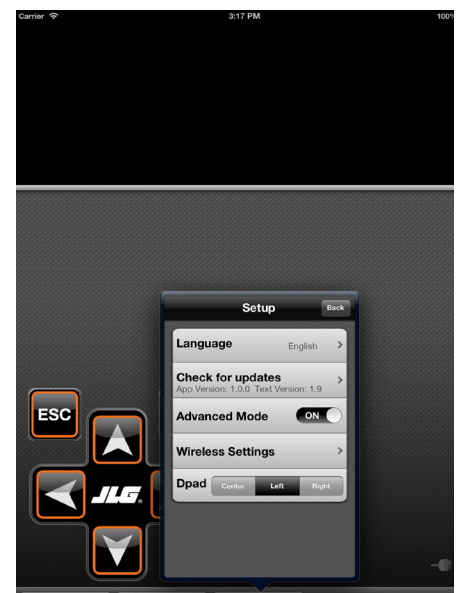
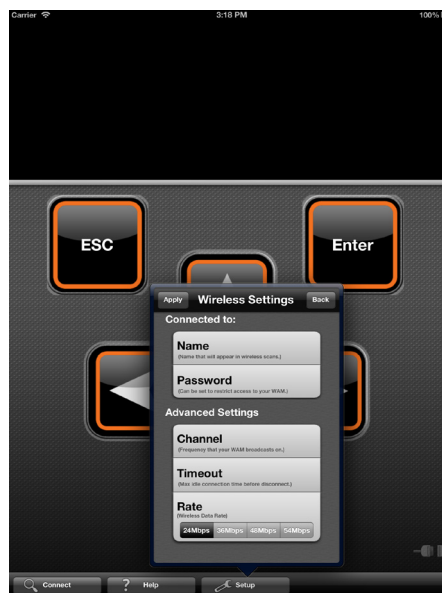
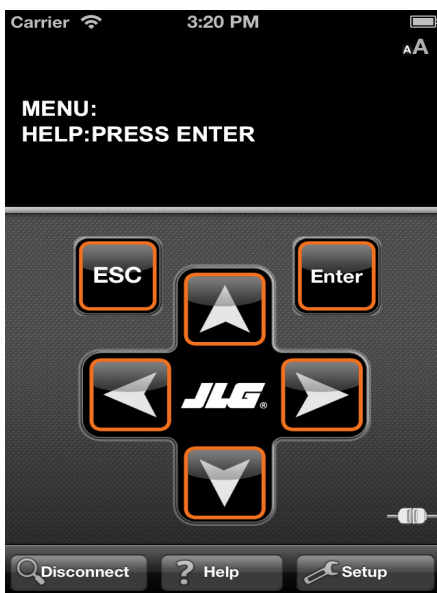
- Compatible with Apple iOS 5.0 and up, plus Android API 8 and up
- Works with JLG® products that are equipped with Advanced Design Electronics (ADE)

BENEFITS

- Allows for extended operator range of up to 150 ft
- Available in multiple languages, with additional languages to be added
- The JLG Mobile Analyzer is interchangeable between machines (Note: it can only be connected to one mobile device at a time)
- Analyzer training is included as part of all JLG factory training
- Displays full description read-outs instead of abbreviated scrolling text



JLG Part Number: 1001147542



JLG Industries, Inc.
 1 JLG Drive
 McConnellsburg, PA 17233-9533
 Telephone 877-554-5438
 Fax 717-485-6417
www.jlg.com

To Order:
 Visit us online at onlineexpress2.jlg.com
 Call us at 1-877-554-5438
 Fax your order to 1-800-733-8939

JLG Mobile Analyzer
 January 2015

Putting your work above everything.®

An Oshkosh Corporation Company