

460SJ 1000-LB

OPTIONAL PACKAGE
TELESCOPIC BOOM LIFT

BOOM LIFT



KEY SPECS

Platform Height
45-ft 4-in / 13.81-m

Drive Speed
4.3 mph / 6.9 km/h

Horizontal Outreach
40-ft / 12.19-m

Platform Capacity
550-lb / 249-kg (Unrestricted)
750-lb / 340-kg (Restricted)
1,000-lb / 454-kg (Restricted)

KEY FEATURES

- Adds an additional restricted capacity zone at a maximum of 45-ft 4-in, with an 1,000-lb restricted capacity zone at a maximum of 38-ft 9-in.
- Comes equipped with a fuel-efficient Tier 4 engine.
- This machine utilizes easy-to-use platform controls to reduce operator training time.
- Complies with A92.20 ANSI regulations, achieving the highest standards.

ACCESSORIES & OPTIONS

- 1/2-in Air Line to Platform
- 43.5-lb (19.73-kg) Propane Tank
- Accessory Packages
 - SkyPower® Package
 - SkyWelder® Package
 - SkyGlazier® Package
- AC Generator
 - 2500W, 60Hz
 - 4000W, 60Hz
- Arctic Package¹
- Bolt-on Fall Arrest System
- Cold Weather Kit²
- Hostile Environment Kit³
- Light Package⁴
- Platforms
 - Drop Bar or Swing Gate, Side Entry
 - 30 x 60-in, 36 x 72-in, 36 x 96-in
 - Drop Bar
 - 30 x 36-in
 - Fall Arrest
 - 36 x 72-in
 - Tri-Entry, Swing Gate or Drop Bar
 - 36 x 72-in, 36 x 96-in
- Platform Mesh, Bolt On
 - Mesh to Top Rail, Plastic or Aluminum
 - Mesh to Mid Rail, Plastic or Aluminum
- Platform Rail Extensions, 6-ft and 8-ft
- Platform Storage Tray, Center or Corner
- Platform Worklights
- SkySense® Enhanced Detection System
- Soft Touch System
- White Noise Alarm

STANDARD SPECIFICATIONS

Performance

Platform Height	45-ft 4-in / 13.81-m
Horizontal Outreach	40-ft / 12.19-m
Swing	360 Degrees Continuous
Platform Capacity (Unrestricted)	550-lb / 249-kg
Platform Capacity (Restricted)	750-lb / 340-kg
Platform Capacity (Restricted)	1,000-lb / 454-kg
Platform Rotator	180 Degrees Hydraulic
Jib	6-ft / 1.83-m
Range of Articulation	130 Degrees (+70, -60)
Weight*	17,637-lb / 8,000-kg
Max. Ground Bearing Pressure	82.12 psi / 5.77 kg/cm ²
Drive Speed	4.3 mph / 6.9 km/h
Gradeability	45%
Tilt Cut Out	5 Degrees
Turning Radius (Inside/Outside)	6-ft 8.7-in (2.05-m) / 15-ft 8.6-in (4.79-m)

*Certain options or country standards increase weight

Engine

Dual Fuel – Kubota WG2503	61 hp / 45.5 kW
Diesel Fuel – Deutz D2.9L4 Tier 4 Final	49 hp / 36.5 kW
Fuel Tank Capacity	22 gal / 83.3 L

Tires

Standard	12 x 16.5 Foam-filled Lug Tread
Optional	14 x 17.5 Foam-filled 12 x 16.5 Foam-filled Non-marking 14 x 17.5 Foam-filled Non-marking 33/16LL x 16.1 Foam-filled Turf 33 x 12D610 Foam-filled

Hydraulic System

Hydraulic Reservoir	36 gal / 136.27 L
Auxiliary Power	12V DC

STANDARD FEATURES

- 5 Degree Tilt Alarm/Indicator Light
- 12V-DC Auxiliary Power
- 110V-AC Receptacle in the Platform
- 180 Degree Hydraulic Platform Rotator
- Control ADE® System
- Four-Wheel Hydrostatic Drive
- Glow Plugs (Diesel Engines)
- Horn
- Hourmeter
- Improved Multi-Function Controls
- Interactive Display at Ground Controls
- Lifting/Tie Down Lugs
- Motion Alarm
- Oscillating Axle
- Platform Console Machine Status Light Panel*
- Proportional Controls
- SkyGuard SkyLine™
- Swing-Out Engine Tray

*Provides indicator lights at platform control console for system distress, fuel level, low fuel, 5 degree tilt light and foot switch status.

1. Includes arctic hydraulic hoses (drive, steer)-main boom cable, extreme cold engine oil, fuel conditioner, engine block heater, battery blanket, glow plugs, hydraulic tank heater, oversized footswitch and arctic hydraulic oil.

2. Includes battery blanket, hydraulic tank heater, engine block heater.

3. Includes boom wipers, cylinder bellows and console cover.

4. Includes platform work lights, head and tail lights, amber beacon.

Additional accessories and options available via JLG Aftermarket.

460SJ 1000-LB

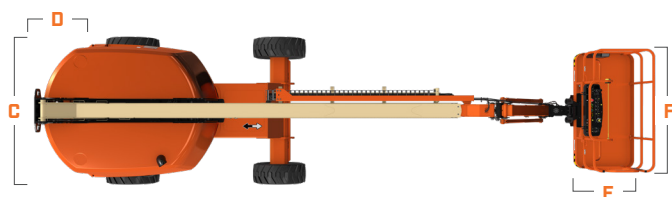
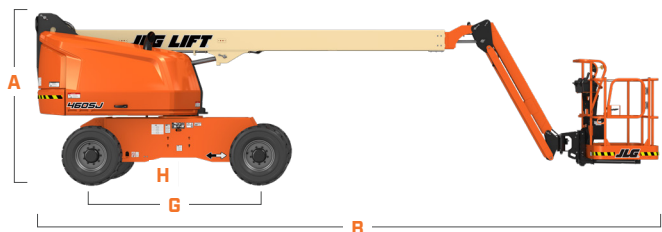
OPTIONAL PACKAGE
TELESCOPIC BOOM LIFT

BOOM LIFT



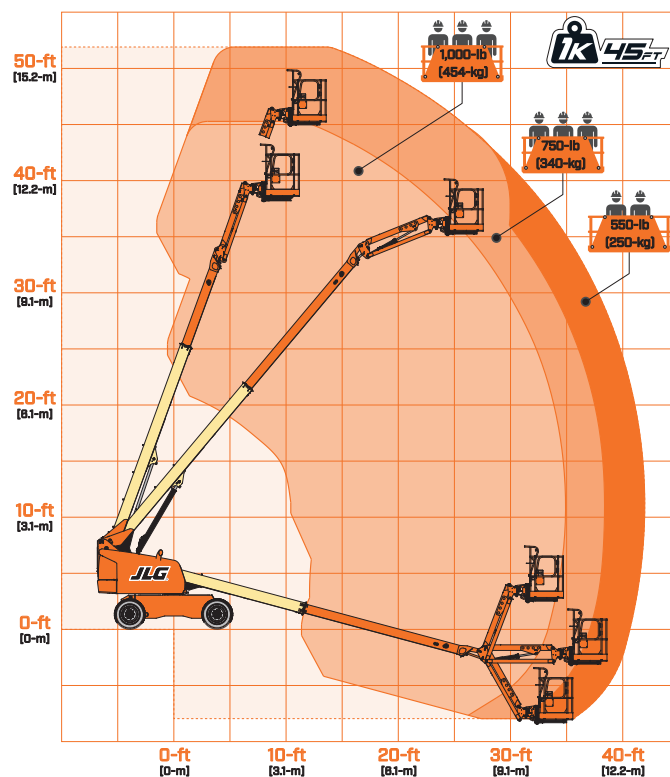
DIMENSIONS

All dimensions are approximate



A. Machine Height	8-ft .5-in / 2.45-m
B. Machine Length	29-ft 8.3-in / 9.1-m
C. Machine Width	7-ft 6-in / 2.3-m
D. Tailswing	3-ft 6-in / 93-cm
E. Platform Width	36.6-in / 93-cm
F. Platform Length	96-in / 2.44-m
G. Wheelbase	7-ft 9.5-in / 2.38-m
H. Ground Clearance	12-in / 30-cm

REACH DIAGRAM



We provide coverage for one (1) full year, and cover all specified major structural components for five (5) years. Due to continuous product improvements, we reserve the right to make specification and/or equipment changes without prior notification. This machine meets or exceeds applicable ANSI and CSA requirements based on machine configuration as originally manufactured for intended applications. Please reference the serial number plate on the machine for additional information.



JLG INDUSTRIES, INC.
Toll-free US 877-JLG-LIFT
JLG.com

An Oshkosh Corporation Company